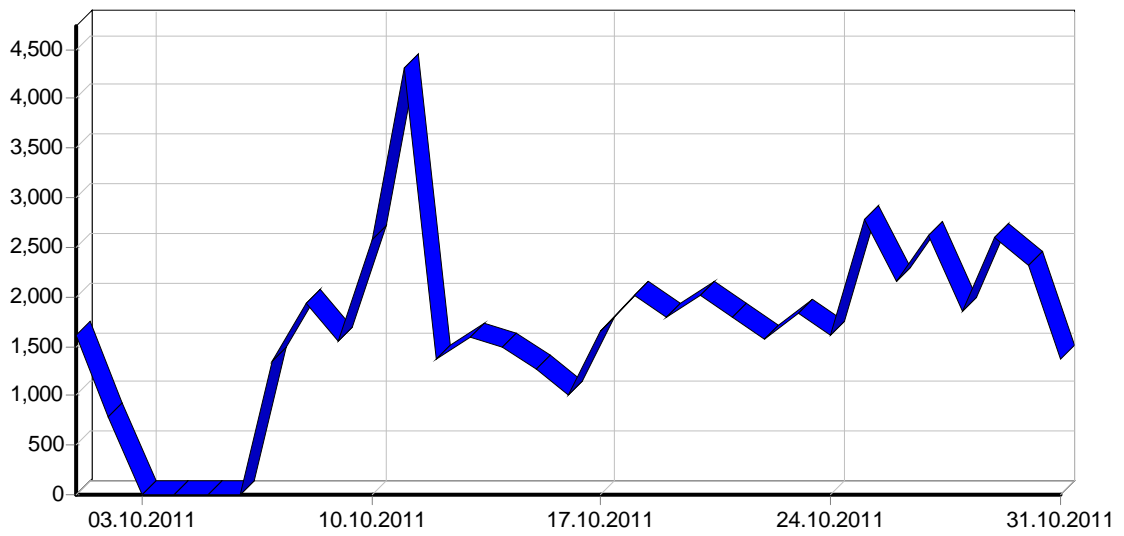
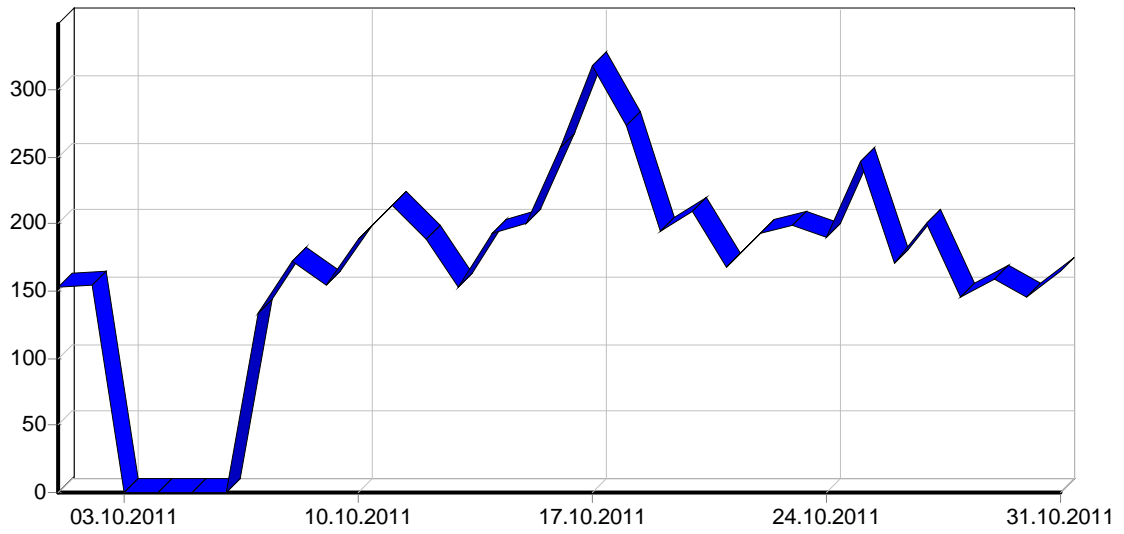
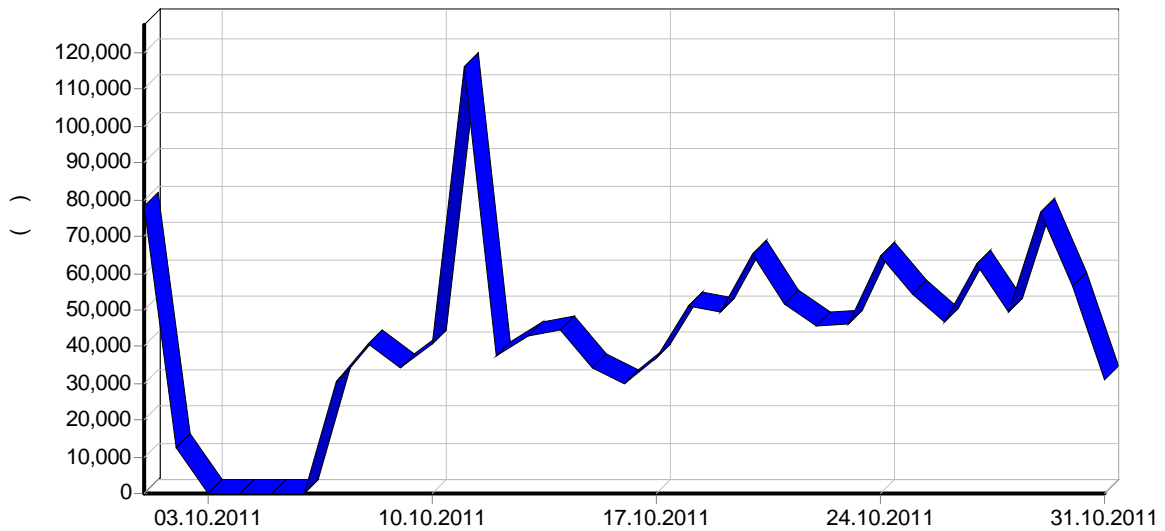
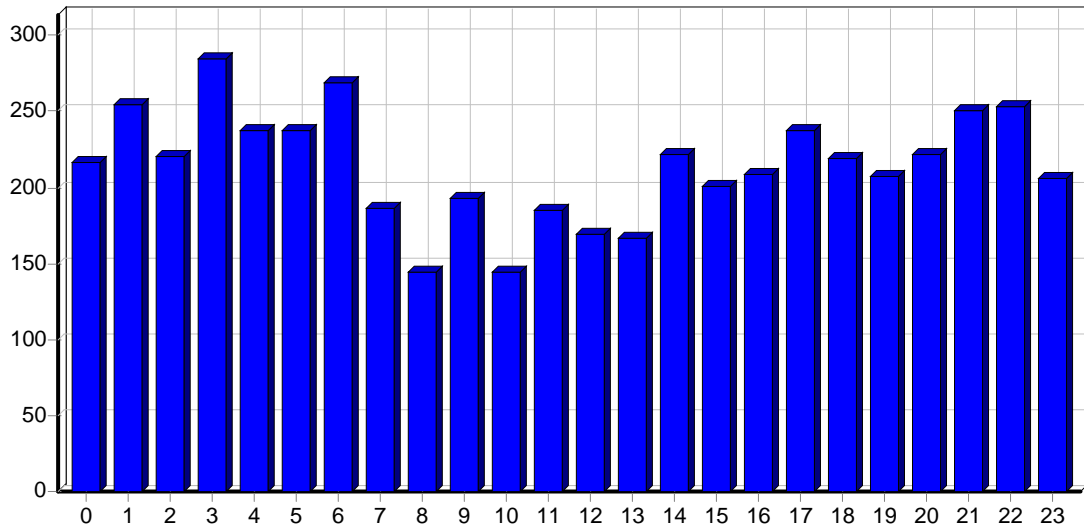


	50,830
	1,639
	9.90
	3,843
	3,069
	15,041
	485
	2.93
	5,135
	165
IP-	2,496
	1.27
	41.89
	26.16
	258.94

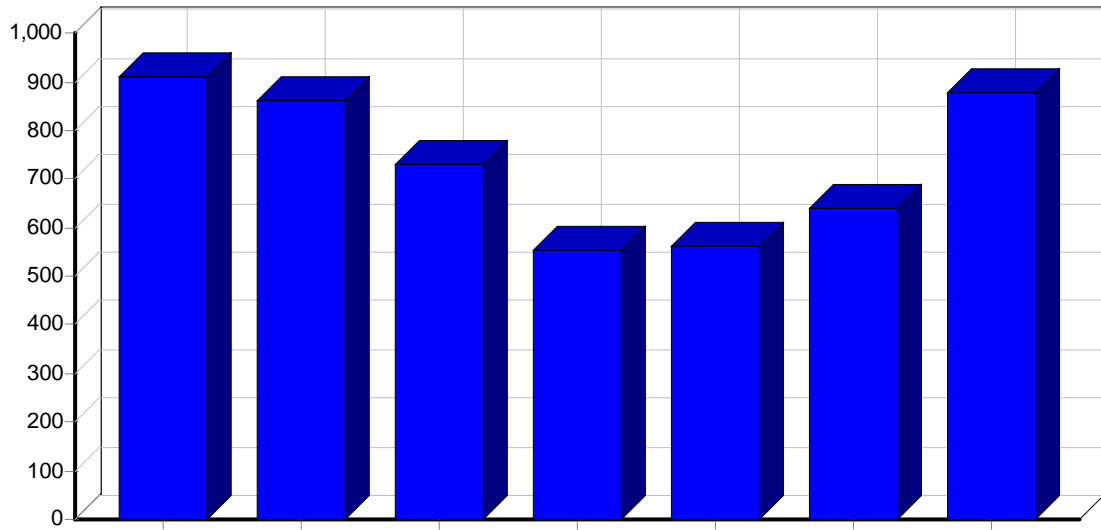




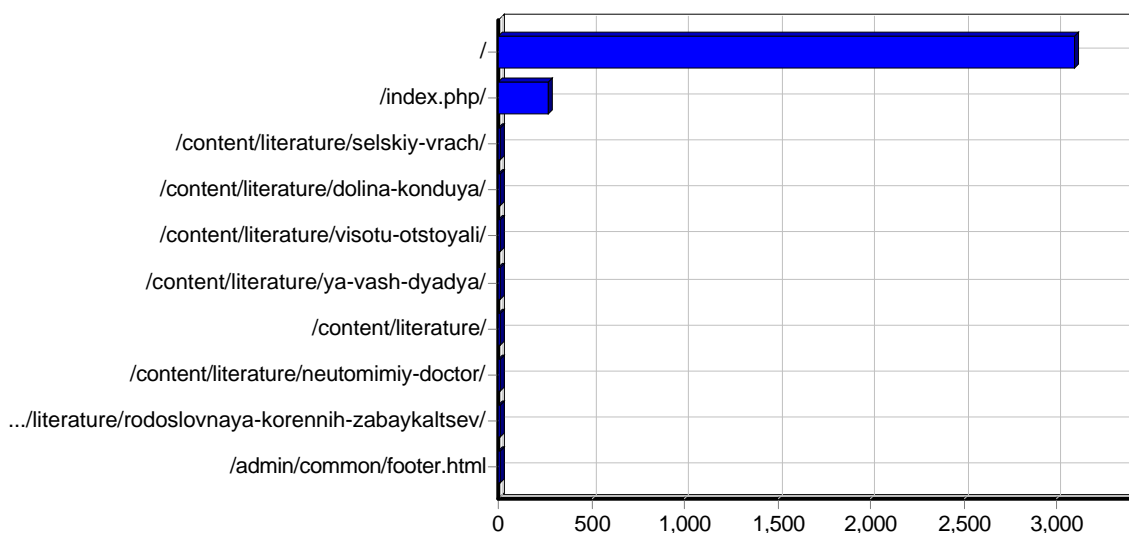
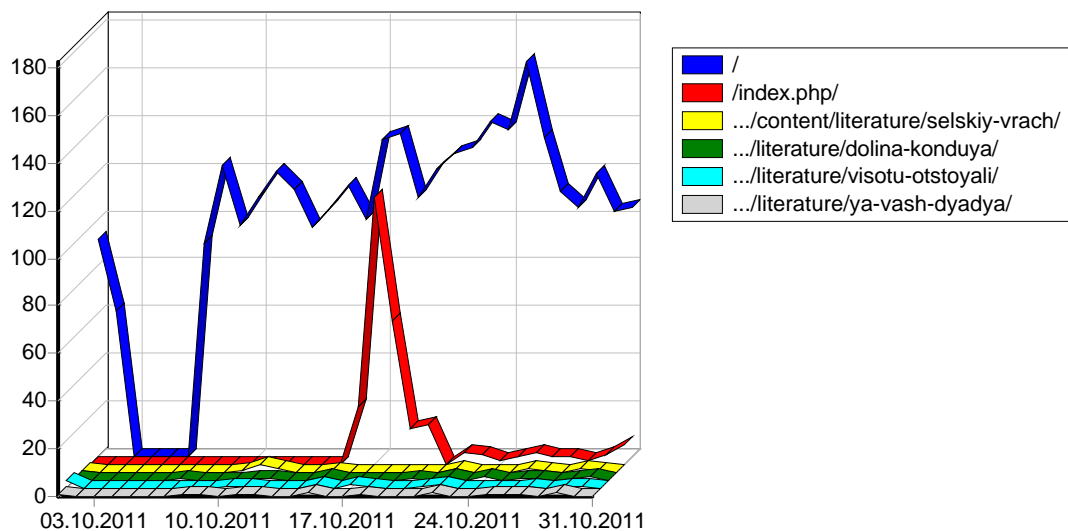
					()
01.10.2011	1,618	845	153	10:56	78,102
02.10.2011	780	452	154	03:06	12,448
03.10.2011	-	-	-	-	-
04.10.2011	-	-	-	-	-
05.10.2011	-	-	-	-	-
06.10.2011	-	-	-	-	-
07.10.2011	1,357	487	133	08:25	30,546
08.10.2011	1,939	715	172	10:32	40,638
09.10.2011	1,555	574	155	03:33	34,077
10.10.2011	2,577	1,022	188	05:19	40,640
11.10.2011	4,305	1,336	213	11:56	116,042
12.10.2011	1,369	280	189	15:43	37,537
13.10.2011	1,596	462	153	08:49	43,120
14.10.2011	1,493	247	193	06:41	44,731
15.10.2011	1,262	495	201	09:10	34,211
16.10.2011	1,011	229	256	01:46	29,821
17.10.2011	1,646	570	317	06:41	36,748
18.10.2011	2,009	545	273	09:57	51,219
19.10.2011	1,797	458	194	06:12	49,254
20.10.2011	2,010	444	209	12:08	65,043
21.10.2011	1,799	352	168	09:37	51,669
22.10.2011	1,567	514	193	11:13	45,801
23.10.2011	1,841	308	199	03:59	46,310
24.10.2011	1,617	321	190	08:31	64,483
25.10.2011	2,777	746	246	02:17	54,218
26.10.2011	2,162	773	170	08:26	46,886
27.10.2011	2,612	527	200	16:00	62,297
28.10.2011	1,845	425	146	05:36	49,576
29.10.2011	2,594	869	159	10:50	76,551
30.10.2011	2,321	637	146	14:43	56,557
31.10.2011	1,371	408	165	06:39	31,125
	50,830	15,041	5,135	08:20	1,329,662



			()
00:00 - 00:59	1,966	217	53,070
01:00 - 01:59	2,421	255	61,988
02:00 - 02:59	1,127	221	29,191
03:00 - 03:59	1,416	285	35,009
04:00 - 04:59	1,872	237	62,421
05:00 - 05:59	1,647	237	35,766
06:00 - 06:59	1,702	269	35,332
07:00 - 07:59	1,447	186	31,431
08:00 - 08:59	1,552	144	51,153
09:00 - 09:59	1,776	193	46,743
10:00 - 10:59	1,880	144	45,865
11:00 - 11:59	1,243	185	30,138
12:00 - 12:59	3,018	169	91,647
13:00 - 13:59	1,754	166	40,974
14:00 - 14:59	2,875	222	78,434
15:00 - 15:59	2,767	201	87,044
16:00 - 16:59	3,326	208	130,316
17:00 - 17:59	2,194	238	51,323
18:00 - 18:59	2,109	219	42,200
19:00 - 19:59	3,235	207	48,534
20:00 - 20:59	2,119	222	50,822
21:00 - 21:59	2,269	251	50,658
22:00 - 22:59	2,777	253	68,168
23:00 - 23:59	2,338	206	71,423
	50,830	5,135	1,329,662

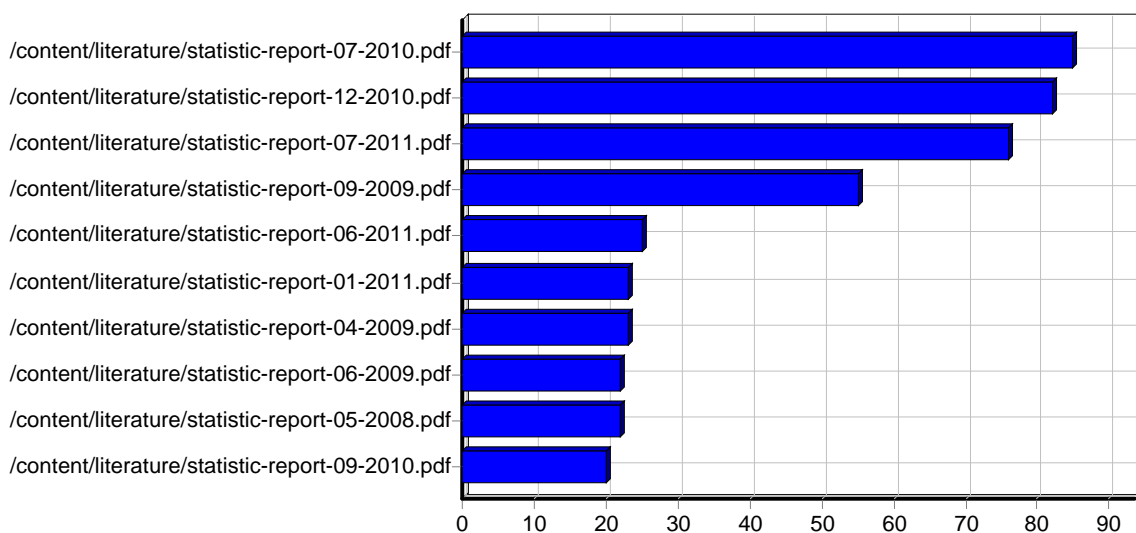
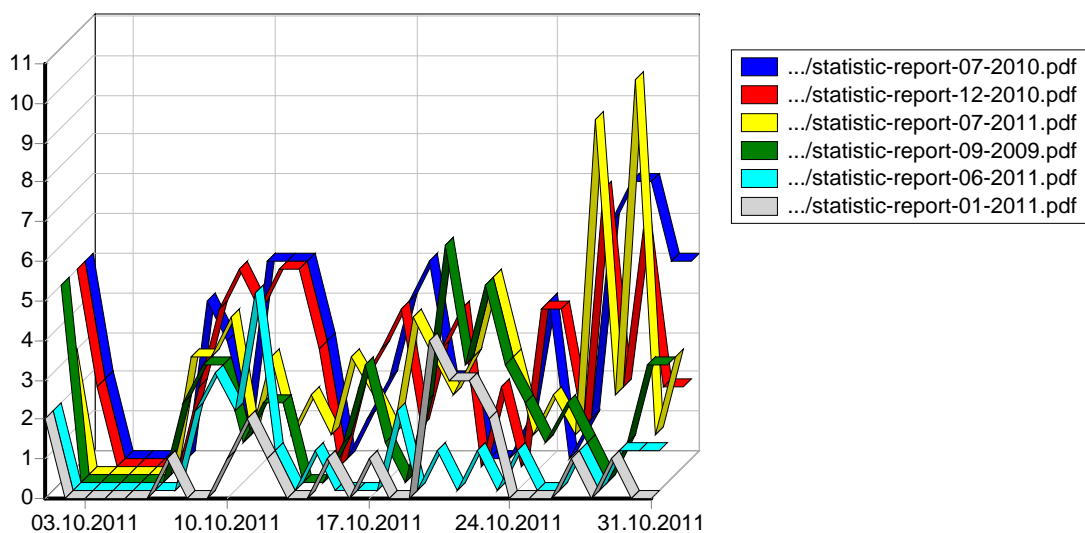


			()
	7,508	910	179,215
	7,211	860	172,997
	9,091	732	221,481
	5,328	553	133,679
	6,218	562	170,461
	6,494	640	176,523
	8,980	878	275,304
	50,830	5,135	1,329,662



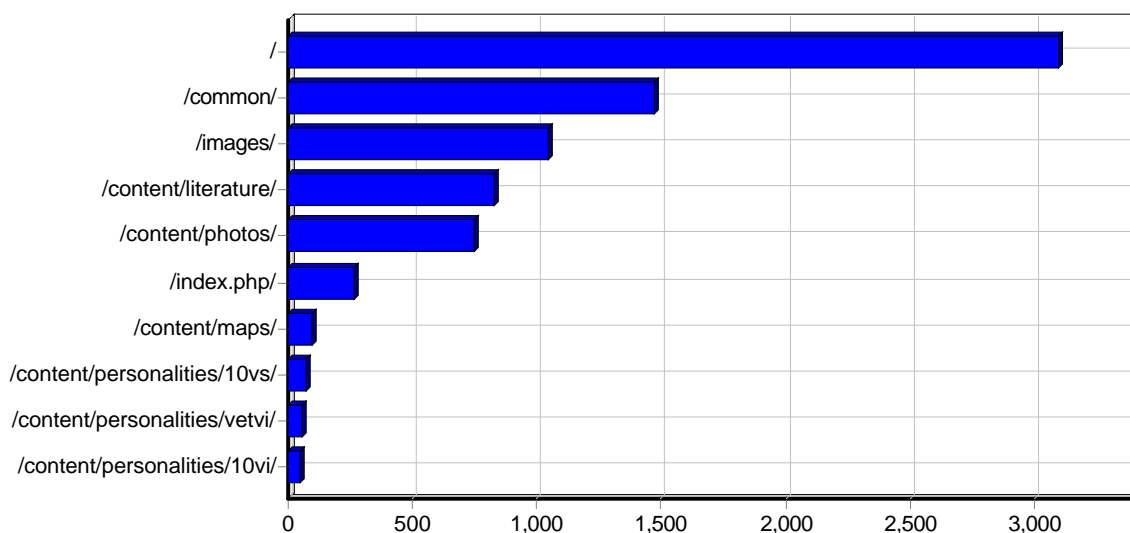
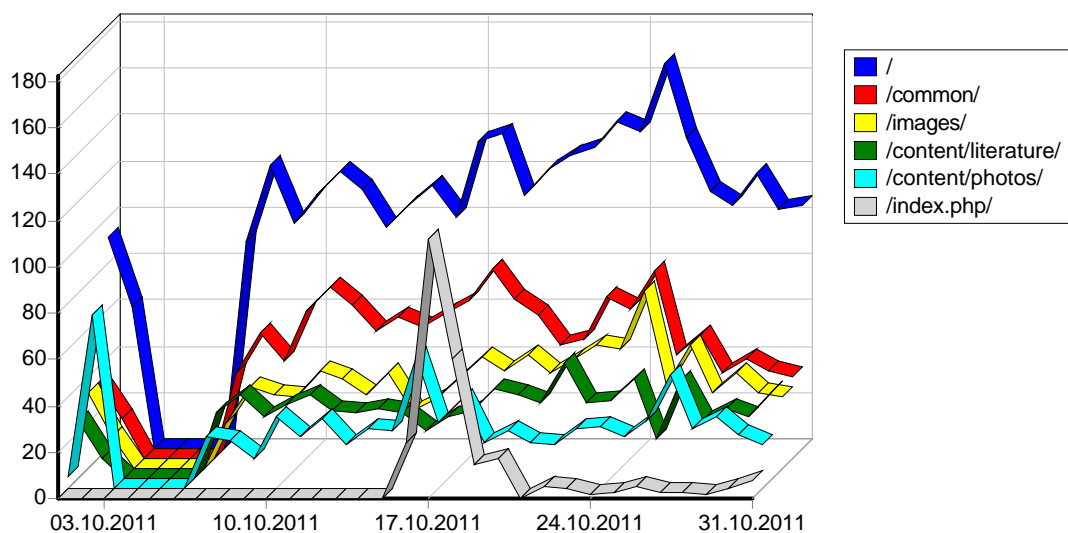
					()
1	http://www.epov.ru/	13,132	0	3,094	425,245
2	http://www.epov.ru/index.php/	771	0	267	11,191
3	http://www.epov.ru/content/literature/selskiy-vrach/	16	0	16	291
4	http://www.epov.ru/content/literature/dolina-konduya/	16	0	16	396
5	http://www.epov.ru/content/literature/visotu-otstoyali/	16	1	16	348
6	http://www.epov.ru/content/literature/ya-vash-dyadya/	15	0	15	258
7	http://www.epov.ru/content/literature/	28	0	12	3
8	http://www.epov.ru/content/literature/neutomimiy-doctor/	11	0	11	385
9	http://www.epov.ru/content/literature/rodoslovnaya-korennih-zabaykaltsev/	10	0	10	135
10	http://www.epov.ru/admin/common/footer.html	10	0	10	1
11	http://www.epov.ru/admin/common/header.html	10	0	10	1
12	http://www.epov.ru/admin/	11	0	8	5
13	http://www.epov.ru/admin/manage.php	15	0	8	7,327

14	http://www.epov.ru/admin/toc.php	7	0	7	7
15	http://www.epov.ru/content/literature/godi-ludi-sudbi/	6	0	6	135
16	http://www.epov.ru/content/	4	0	4	1
17	http://www.epov.ru/content/personalities/0/	7	0	3	0
18	http://www.epov.ru/content/personalities/3/	16	0	3	2
19	http://www.epov.ru/content/personalities/2/	10	0	2	1
20	http://www.epov.ru/content/personalities/vetvi/	6	0	2	0
21	http://www.epov.ru/content/personalities/10vi/	2	0	2	0
22	http://www.epov.ru/content/personalities/	3	0	2	0
23	http://www.epov.ru/	3	0	2	26
24	http://www.epov.ru/content/personalities/1/	2	0	2	0
25	http://www.epov.ru/content/personalities/8vp/	5	0	1	0
26	http://www.epov.ru/content/personalities/8vn/	19	0	1	2
27	http://www.epov.ru/content/personalities/8sn/	21	0	1	3
28	http://www.epov.ru/content/personalities/8vi/	19	0	1	2
29	http://www.epov.ru/content/personalities/8vm/	3	0	1	0
30	http://www.epov.ru/content/personalities/8vs/	11	0	1	1
31	http://www.epov.ru/content/personalities/9vm/	5	0	1	0
32	http://www.epov.ru http://epov.ru/	1	0	1	496
33	http://www.epov.ru http://www.epov.ru/	1	0	1	496
34	http://www.epov.ru/content/personalities/9sm/	23	0	1	3
35	http://www.epov.ru/content/personalities/9sn/	49	0	1	7
36	http://www.epov.ru/content/personalities/10vp/	1	0	1	0
37	http://www.epov.ru/content/personalities/10vs/	1	0	1	0
38	http://www.epov.ru/content/personalities/4/	23	0	1	3
39	http://www.epov.ru/	2	0	1	18
40	http://www.epov.ru/content/personalities/10vm/	1	0	1	0
41	http://www.epov.ru/content/personalities/10vn/	1	0	1	0
42	http://www.epov.ru/content/personalities/5/	25	0	1	3
43	http://www.epov.ru/content/personalities/7sn/	11	0	1	1
44	http://www.epov.ru/content/personalities/7ss/	9	0	1	1
45	http://www.epov.ru/content/personalities/8sm/	7	0	1	0
46	http://www.epov.ru/content/personalities/6/	21	0	1	3
47	http://www.epov.ru/content/personalities/7/	21	0	1	3
48	http://www.epov.ru/content/personalities/7sm/	11	0	1	1
		14,418	1	-	446,823



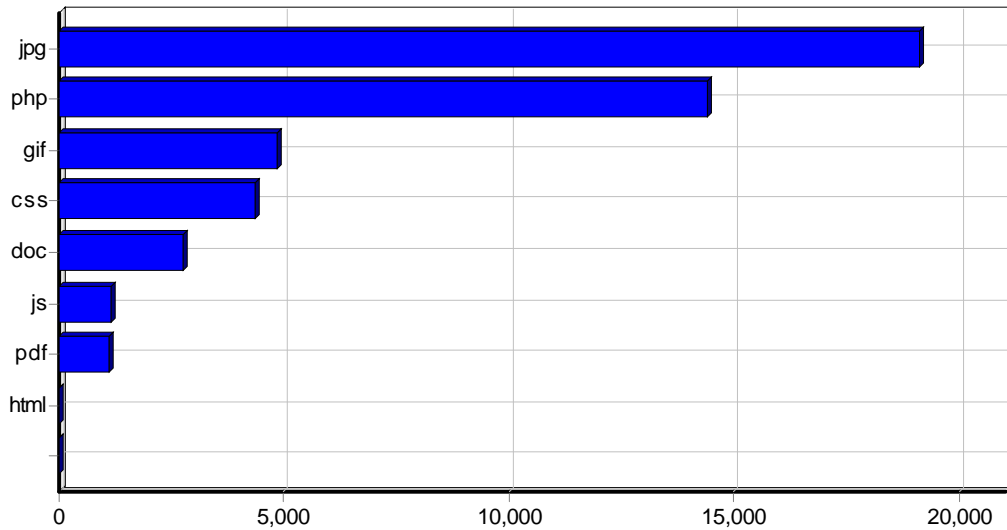
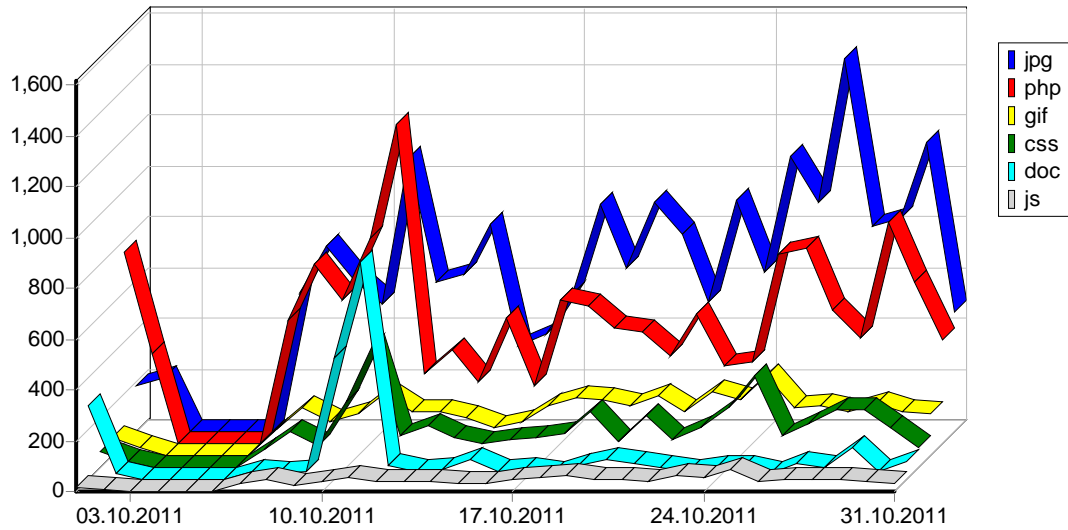
					()
1	http://www.epov.ru/content/literature/statistic-report-07-2010.pdf	86	1	85	10,277
2	http://www.epov.ru/content/literature/statistic-report-12-2010.pdf	83	1	82	9,063
3	http://www.epov.ru/content/literature/statistic-report-07-2011.pdf	78	1	76	7,984
4	http://www.epov.ru/content/literature/statistic-report-09-2009.pdf	55	0	55	5,372
5	http://www.epov.ru/content/literature/statistic-report-06-2011.pdf	26	1	25	2,695
6	http://www.epov.ru/content/literature/statistic-report-01-2011.pdf	24	1	23	3,576
7	http://www.epov.ru/content/literature/statistic-report-04-2009.pdf	23	0	23	1,847
8	http://www.epov.ru/content/literature/statistic-report-06-2009.pdf	22	0	22	1,657
9	http://www.epov.ru/content/literature/statistic-report-05-2008.pdf	24	2	22	2,689
10	http://www.epov.ru/content/literature/statistic-report-09-2010.pdf	22	2	20	2,256
11	http://www.epov.ru/content/literature/statistic-report-07-2009.pdf	20	0	20	1,979
12	http://www.epov.ru/content/literature/statistic-report-09-2011.pdf	23	4	18	2,444
13	http://www.epov.ru/content/literature/statistic-report-08-2011.pdf	21	2	18	2,512
14	http://www.epov.ru/content/literature/statistic-report-07-2008.pdf	18	0	18	1,382
15	http://www.epov.ru/content/literature/statistic-report-02-2010.pdf	17	1	17	1,739
16	http://www.epov.ru/content/literature/statistic-report-05-2011.pdf	19	1	17	2,756

17	http://www.epov.ru/content/literature/statistic-report-08-2008.pdf	15	0	15	1,084
18	http://www.epov.ru/content/literature/statistic-report-10-2009.pdf	15	0	15	1,550
19	http://www.epov.ru/content/literature/statistic-report-08-2009.pdf	14	0	14	2,003
20	http://www.epov.ru/content/literature/statistic-report-08-2010.pdf	14	1	14	1,226
21	http://www.epov.ru/content/literature/statistic-report-12-2009.pdf	15	0	14	1,284
22	http://www.epov.ru/content/literature/statistic-report-04-2011.pdf	14	1	14	1,432
23	http://www.epov.ru/content/literature/statistic-report-03-2011.pdf	15	1	14	1,457
24	http://www.epov.ru/content/literature/statistic-report-11-2008.pdf	15	0	14	1,453
25	http://www.epov.ru/content/literature/statistic-report-04-2010.pdf	13	1	13	955
26	http://www.epov.ru/content/literature/statistic-report-12-2008.pdf	13	0	13	1,303
27	http://www.epov.ru/content/literature/statistic-report-01-2008.pdf	16	3	13	1,824
28	http://www.epov.ru/content/literature/statistic-report-12-2007.pdf	13	0	13	953
29	http://www.epov.ru/content/literature/statistic-report-10-2008.pdf	13	0	13	1,108
30	http://www.epov.ru/content/literature/statistic-report-02-2008.pdf	13	0	13	820
31	http://www.epov.ru/content/literature/statistic-report.pdf	14	2	12	2,541
32	http://www.epov.ru/content/literature/statistic-report-06-2010.pdf	12	1	12	1,145
33	http://www.epov.ru/content/literature/statistic-report-06-2008.pdf	12	0	12	1,846
34	http://www.epov.ru/content/literature/statistic-report-01-2010.pdf	12	0	12	1,903
35	http://www.epov.ru/content/literature/statistic-report-10-2007.pdf	12	0	12	618
36	http://www.epov.ru/content/literature/statistic-report-11-2009.pdf	11	0	11	1,725
37	http://www.epov.ru/content/literature/statistic-report-10-2010.pdf	11	1	11	1,612
38	http://www.epov.ru/content/literature/statistic-report-03-2008.pdf	11	0	11	1,885
39	http://www.epov.ru/content/literature/statistic-report-03-2010.pdf	11	1	11	949
40	http://www.epov.ru/content/literature/statistic-report-02-2009.pdf	11	0	11	1,238
41	http://www.epov.ru/content/literature/statistic-report-02-2011.pdf	11	1	11	1,744
42	http://www.epov.ru/content/literature/statistic-report-05-2010.pdf	11	1	11	1,167
43	http://www.epov.ru/content/literature/statistic-report-11-2007.pdf	11	0	11	713
44	http://www.epov.ru/content/literature/statistic-report-06-2007.pdf	11	0	11	827
45	http://www.epov.ru/content/literature/statistic-report-05-2007.pdf	11	0	10	486
46	http://www.epov.ru/content/literature/statistic-report-05-2009.pdf	10	0	10	942
47	http://www.epov.ru/content/literature/avvan-i-gayro.pdf	11	1	10	32,979
48	http://www.epov.ru/content/literature/galkin-paper-japan.pdf	51	41	10	3,784
49	http://www.epov.ru/content/literature/statistic-report-09-2008.pdf	9	0	9	823
50	http://www.epov.ru/content/literature/statistic-report-08-2007.pdf	9	0	9	1,418
		1,021	73	-	139,050
		1,103	87	-	211,406

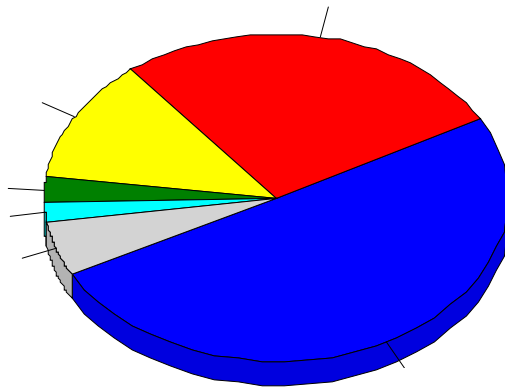
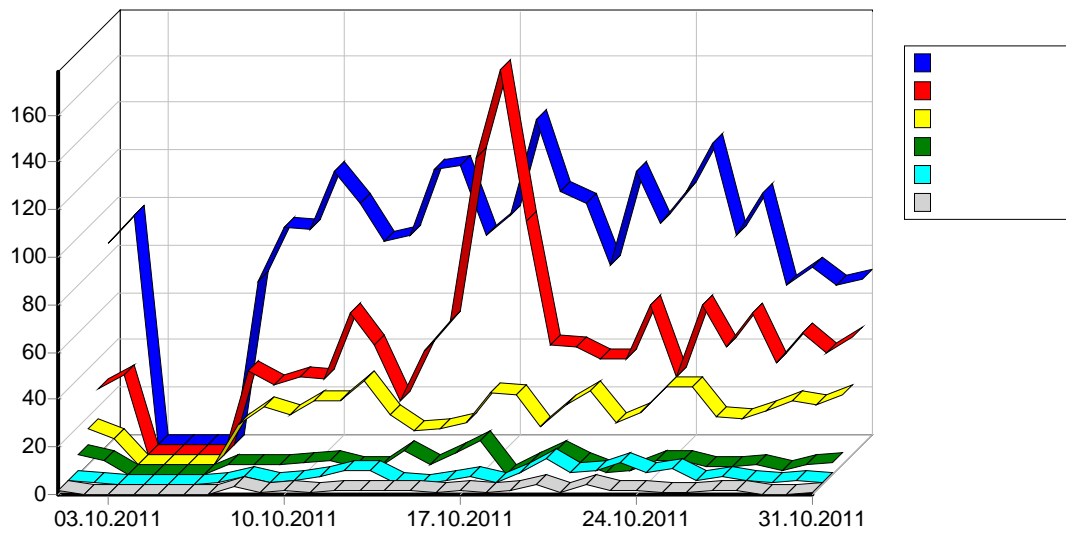


					()
1	http://www.epov.ru/	13,133	0	3,094	425,256
2	http://www.epov.ru/common/	5,499	1	1,472	6,736
3	http://www.epov.ru/images/	8,436	1	1,049	60,496
4	http://www.epov.ru/content/literature/	2,453	155	832	303,072
5	http://www.epov.ru/content/photos/	14,617	25	749	451,760
6	http://www.epov.ru/index.php/	771	0	267	11,191
7	http://www.epov.ru/content/maps/	369	0	100	18,693
8	http://www.epov.ru/content/personalities/10vs/	228	0	71	5,705
9	http://www.epov.ru/content/personalities/vetvi/	210	27	57	4,130
10	http://www.epov.ru/content/personalities/10vi/	160	0	52	3,899
11	http://www.epov.ru/content/personalities/10vn/	112	0	39	2,407
12	http://www.epov.ru/content/broshura/	158	0	31	4,711
13	http://www.epov.ru/content/personalities/vetvi-yasash/	86	27	29	2,010
14	http://www.epov.ru/content/personalities/10vp/	99	0	27	2,309
15	http://www.epov.ru/content/personalities/9vi/	64	0	26	1,573
16	http://www.epov.ru/content/personalities/4/	83	11	20	944

17	http://www.epov.ru/content/personalities/9vn/	49	0	19	897
18	http://www.epov.ru/content/personalities/6/	72	7	18	805
19	http://www.epov.ru/content/personalities/9vp/	33	0	16	729
20	http://www.epov.ru/content/personalities/3/	58	7	16	710
21	http://www.epov.ru/content/literature/visotu-otstoyali/	16	1	16	348
22	http://www.epov.ru/content/literature/selskiy-vrach/	16	0	16	291
23	http://www.epov.ru/content/literature/dolina-konduya/	16	0	16	396
24	http://www.epov.ru/content/literature/ya-vash-dyadya/	15	0	15	258
25	http://www.epov.ru/content/personalities/9sm/	64	0	15	632
26	http://www.epov.ru/index.php/content/photos/	15	0	14	164
27	http://www.epov.ru/content/personalities/7/	61	1	13	596
28	http://www.epov.ru/admin/common/	45	0	13	22
29	http://www.epov.ru/content/personalities/10sn/	53	0	12	1,231
30	http://www.epov.ru/content/personalities/5/	69	9	11	679
31	http://www.epov.ru/content/literature/neutomimiy-doctor/	11	0	11	385
32	http://www.epov.ru/content/personalities/0/	20	1	10	205
33	http://www.epov.ru/content/personalities/9sn/	126	0	10	1,153
34	http://www.epov.ru/content/literature/rodoslovnaya-korennih-zabaykaltsev/	10	0	10	135
35	http://www.epov.ru/admin/	33	0	8	7,340
36	http://www.epov.ru/content/personalities/8sn/	61	6	8	629
37	http://www.epov.ru/content/personalities/7sn/	35	5	7	352
38	http://www.epov.ru/admin/images/	7	0	7	0
39	http://www.epov.ru/content/personalities/10sm/	24	0	7	555
40	http://www.epov.ru/content/personalities/10vm/	25	0	7	493
41	http://www.epov.ru/content/personalities/1/	11	1	7	120
42	http://www.epov.ru/content/personalities/9vs/	41	0	7	973
43	http://www.epov.ru/content/personalities/8vn/	49	0	6	428
44	http://www.epov.ru/content/personalities/8sm/	22	0	6	231
45	http://www.epov.ru/content/personalities/7sm/	34	5	6	352
46	http://www.epov.ru/content/personalities/2/	24	2	6	213
47	http://www.epov.ru/content/literature/godi-ludi-sudbi/	6	0	6	135
48	http://www.epov.ru/content/personalities/8vs/	31	0	5	304
49	http://www.epov.ru/content/personalities/8vi/	37	0	4	304
50	http://www.epov.ru/content/	4	0	4	1
		47,671	292	-	1,326,979
		47,761	296	-	1,328,787

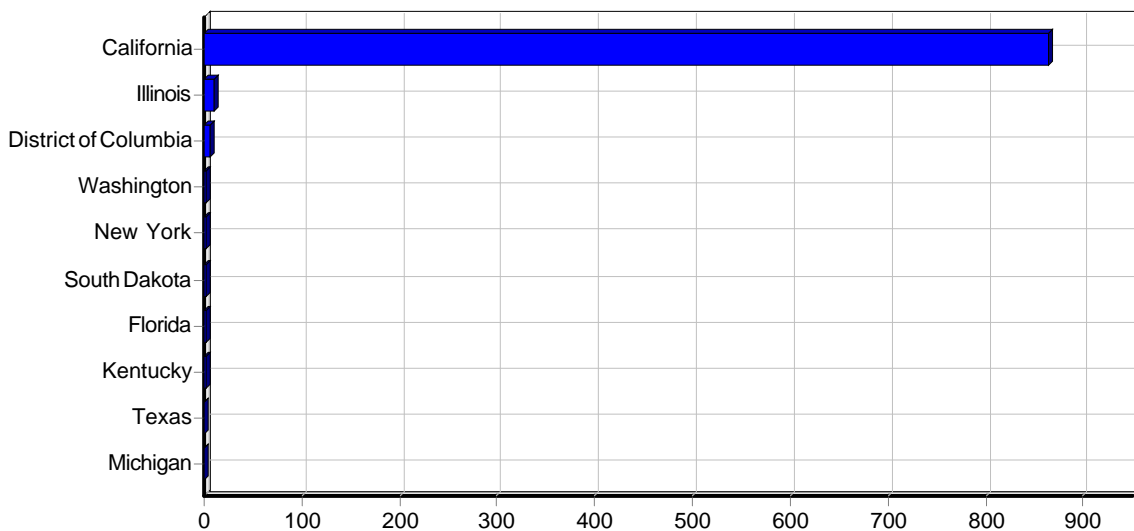


				()
1	jpg	19,125	26	548,152
2	php	14,398	1	446,820
3	gif	4,827	0	1,226
4	css	4,360	0	4,963
5	doc	2,758	181	114,375
6	js	1,166	1	1,796
7	pdf	1,103	87	211,406
8	html	20	0	2
9		4	0	43
		47,761	296	1,328,787



				%	()
1		28,727	2,581	50.26%	703,132
2		4,583	1,423	27.71%	156,485
3		10,482	625	12.17%	243,425
4		592	136	2.65%	10,956
5		287	91	1.77%	7,813
6		158	43	0.84%	4,577
7		509	41	0.80%	12,466
8		474	36	0.70%	15,641
9		1,836	25	0.49%	78,716
10		256	25	0.49%	9,085
11		651	22	0.43%	15,531
12		200	12	0.23%	349
13		39	9	0.18%	355
14		84	7	0.14%	2,703

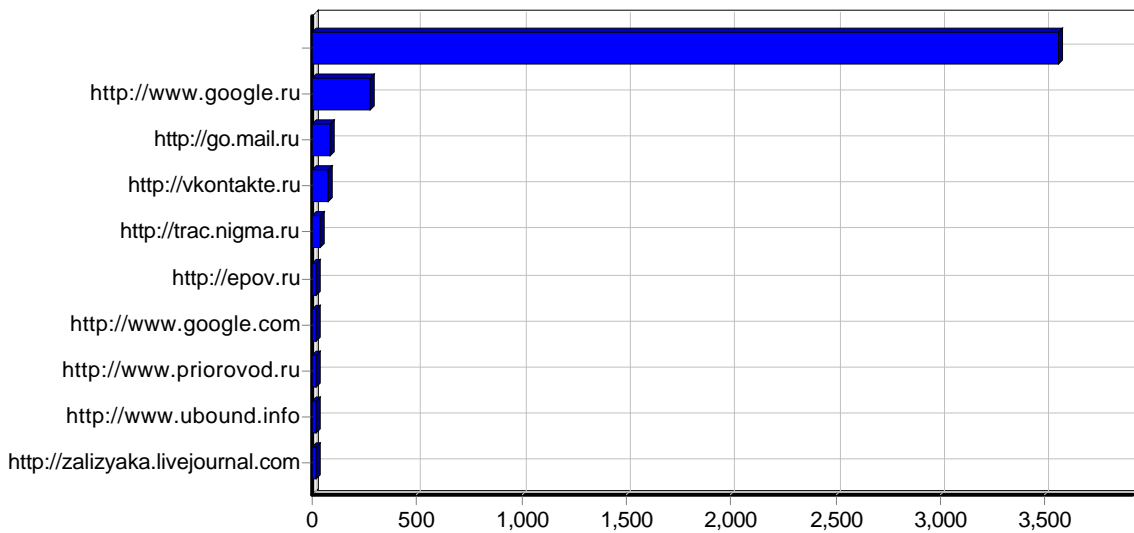
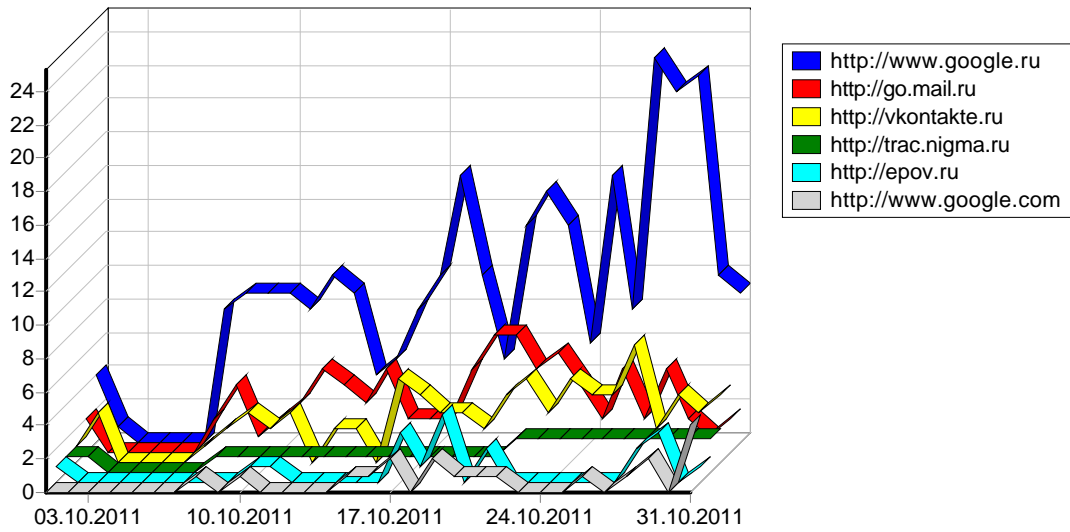
15		68	7	0.14%	1,264
16		36	6	0.12%	1,832
17		158	5	0.10%	1,795
18		73	4	0.08%	437
19		376	3	0.06%	9,723
20		9	3	0.06%	1,506
21		7	2	0.04%	686
22		499	2	0.04%	28,253
23		21	2	0.04%	178
24		20	2	0.04%	189
25		5	2	0.04%	27
26		207	2	0.04%	5,021
27		336	1	0.02%	10,781
28		21	1	0.02%	259
29		14	1	0.02%	83
30		5	1	0.02%	328
31		1	1	0.02%	496
32		3	1	0.02%	533
33		1	1	0.02%	158
34		1	1	0.02%	496
35		1	1	0.02%	10
36		2	1	0.02%	86
37	-	1	1	0.02%	496
38		1	1	0.02%	496
39		40	1	0.02%	1,056
40		2	1	0.02%	11
41		3	1	0.02%	22
42		2	1	0.02%	993
43	'	20	1	0.02%	584
44		16	1	0.02%	88
45		3	1	0.02%	518
		50,830	5,135	100.00%	1,329,662



				()
1	California	1,976	864	90,297
2	Illinois	11	10	120
3	District of Columbia	7	7	43
4	Washington	19	3	110
5	New York	7	3	1,048
6	South Dakota	12	3	67
7	Florida	4	2	22
8	Kentucky	15	2	98
9	Texas	3	1	548
10	Michigan	3	1	1,004
11	Minnesota	4	1	22
12	North Dakota	2	1	507
		2,063	898	93,891

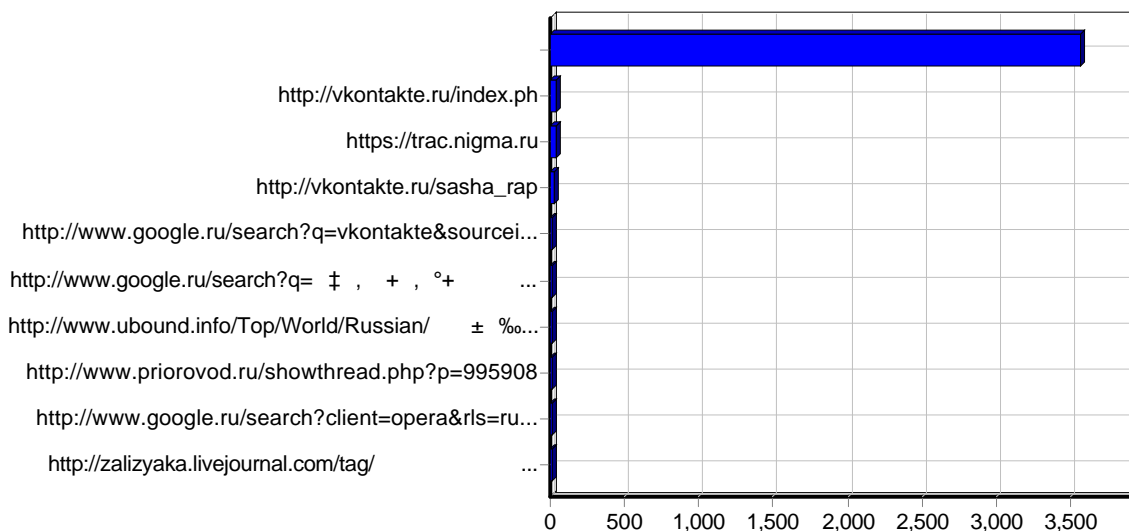
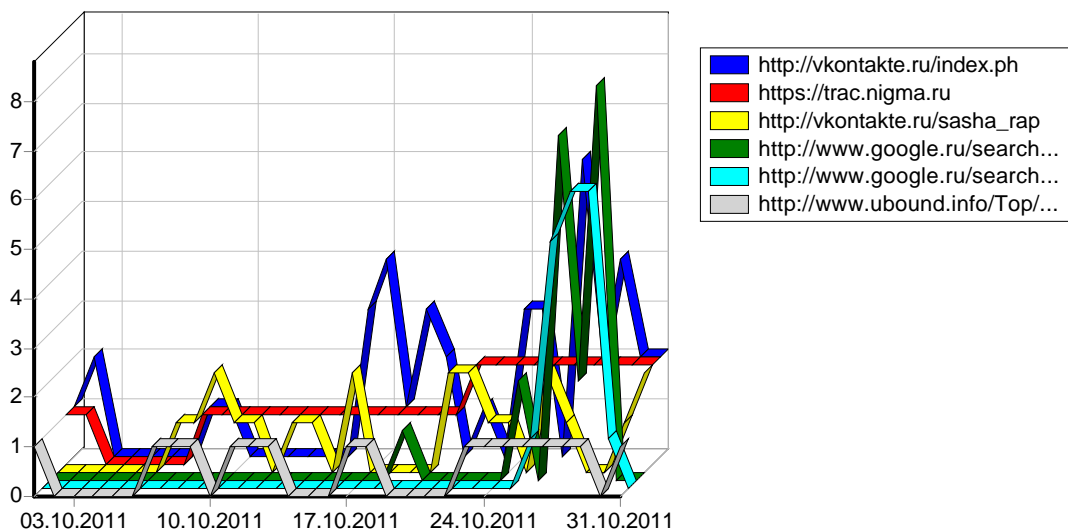
				()
1	Mountain View, California,	1,969	859	90,217
2	Moscow,	5,603	398	138,756
3	Sollentuna,	176	121	1,701
4	Beijing,	236	75	4,935
5	Novosibirsk,	664	44	13,424
6	Paris,	152	38	3,580
7	Krasnoyarsk,	473	32	10,382
8	Kaliningrad,	431	21	8,169
9	Saint Petersburg,	476	18	9,773
10	Vladivostok,	695	18	18,384
11	Redditch,	63	16	1,141
12	Kiev,	159	13	7,669
13	Frankfurt Am Main,	1,327	11	45,358
14	Chicago, Illinois,	11	10	120
15	Irkutsk,	392	10	10,398
16	Guangzhou,	8	8	87
17	Chita,	169	8	3,381
18	Washington, District of Columbia,	7	7	43
19	Borzya,	82	5	1,281
20	London,	87	5	502
21	Ryazan,	113	5	1,089
22	Norwich,	15	5	2,593
23	San Francisco, California,	5	3	80
24	Sioux Falls, South Dakota,	12	3	67
25	Gloucester,	8	3	39
26	Tallinn,	56	3	348
27	Gro wallstadt,	22	3	328
28	Ulan-Ude,	54	3	382
29	Stockholm,	34	3	689
30	Yekaterinburg,	17	3	1,150
31	Penza,	78	3	1,389
32	Warszawa,	3	3	1,004
33	Marseille,	3	3	477

34	Ust-Kut,	72	3	1,435
35	Kumi,	101	3	277
36	Madrid,	9	3	1,506
37	Amsterdam,	15	3	173
38	Chengdu,	12	3	50
39	Munich,	2	2	21
40	Minsk,	207	2	5,021
41	Novaya,	20	2	227
42	Novgorod,	16	2	117
43	Milano,	3	2	590
44	Chisinau,	21	2	178
45	Khabarovsk,	19	2	312
46	Chelyabinsk,	191	2	5,814
47	Makhachkala,	2	2	53
48	Odessa,	4	2	588
49	Ural,	61	2	1,389
50	Tomsk,	44	2	1,073
		14,399	1,799	397,786
		17,045	1,916	490,106



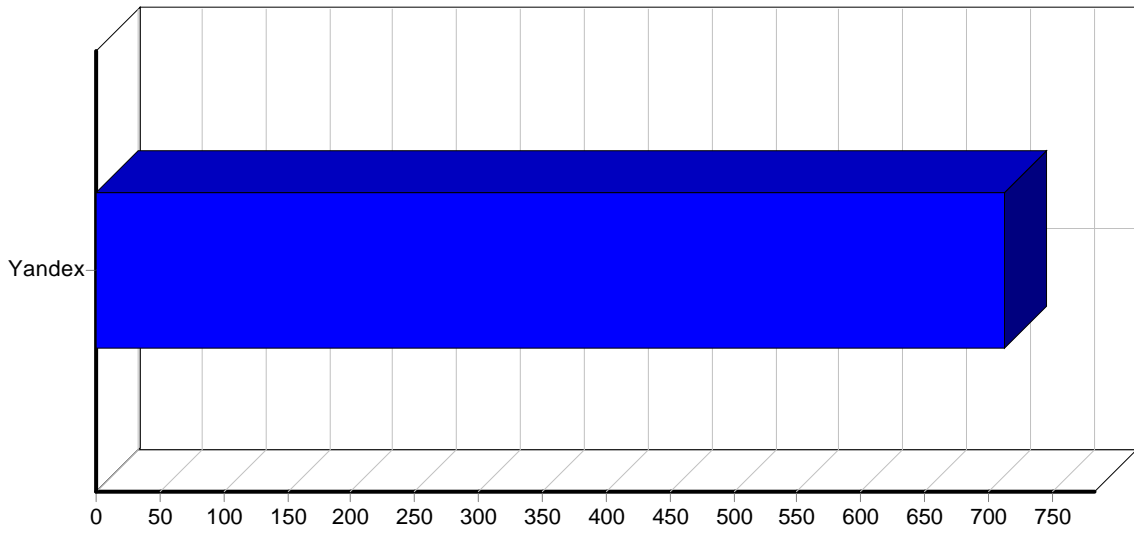
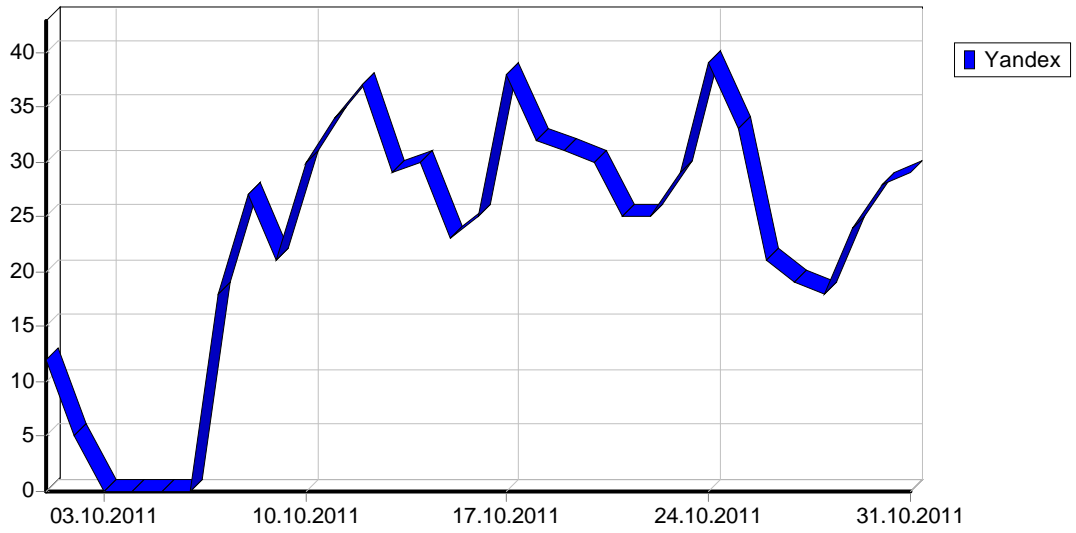
1		3,560
2	http://www.google.ru	281
3	http://go.mail.ru	90
4	http://vkontakte.ru	81
5	http://trac.nigma.ru	36
6	http://epov.ru	19
7	http://www.google.com	19
8	http://www.priorovod.ru	17
9	http://www.ubound.info	17
10	http://zalizyaka.livejournal.com	16
11	http://nova.rambler.ru	13
12	http://ru.wikipedia.org	13
13	http://www.google.com.ua	12
14	http://www.bing.com	10

15	http://webalta.ru	8
16	http://pano.corp2.net	7
17	http://geotaku-no-fansu.tk	7
18	http://www.rating21.ru	6
19	http://www.predistoria.org	6
20	http://search.qip.ru	6
21	http://www.world-mmo.com	6
22	http://yandex.ua	6
23	http://xn--http-43dx3aapciwdic5c	5
24	http://images.yandex.ua	5
25	http://vk.com	5
26	http://www.wtracker.org	5
27	http://qseo.net	5
28	http://yandex.kz	5
29	http://karpaty.ua	4
30	http://www.altynsarin.ru	4
31	http://hghld.yandex.net	4
32	http://search.conduit.com	3
33	http://mobissl.ru	3
34	http://sakh.com	3
35	http://www.yandex.ru	3
36	http://www.xtremestrike.tk	3
37	http://gershzon.ru	2
38	http://odnoklassniki.ru	2
39	http://yandex.by	2
40	http://casino-onlain.com	2
41	http://whois.domaintools.com	2
42	http://alpha.yaplakal.com	2
43	http://www.google.bg	2
44	http://www.whorush.com	2
45	http://www.google.co.jp	2
46	http://www.unrealtech.ru	2
47	http://pocc2011.com	2
48	http://www.google.kz	2
49	http://search.livetool.ru	2
50	http://www.yandex.ruhttp	2
		4,321
		4,423

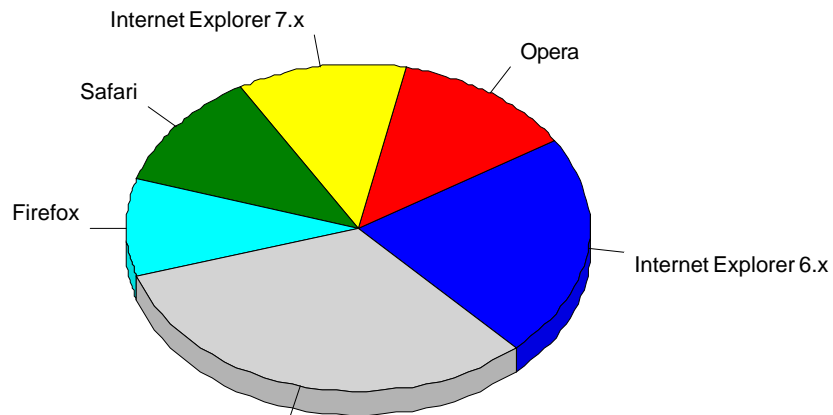
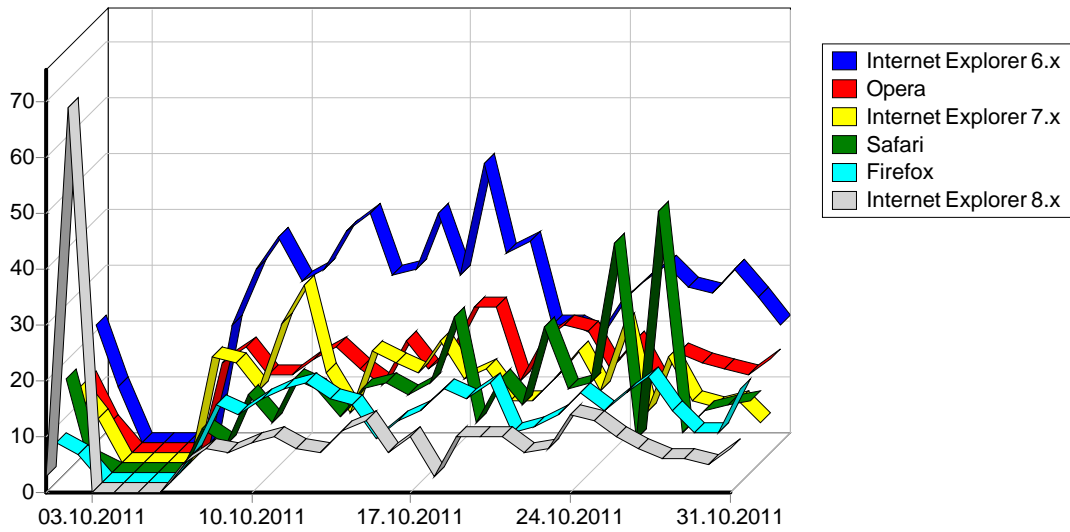


	URL	
1		3,560
2	http://vkontakte.ru/index.ph	41
3	https://trac.nigma.ru	36
4	http://vkontakte.ru/sasha_rap	22
5	http://www.google.ru/search?q=vkontakte&sourceid=opera&ie=utf-8&oe=utf-8&channel=suggest	20
6	http://www.google.ru/search?q= ‡ , + , °+ μ+ ° . &sourceid=opera&ie=utf-8&oe=utf-8&channel=suggest	19
7	http://www.ubound.info/Top/World/Russian/ ± % μ , / “ μ μ ° » / π ° »	17
8	http://www.priorovod.ru/showthread.php?p=995908	16
9	http://www.google.ru/search?client=opera&rls=ru&q= ° , „ ‡ μ + ° , ,&sourceid=opera&ie=utf-8&oe=utf-8	13
10	http://zalizyaka.livejournal.com/tag/ ° μ , , » μ	13
11	http://epov.ru/index.php	7
12	http://www.google.ru/search?q=http://qip.ru/&sourceid=opera&ie=utf-8&oe=utf-8&channel=suggest	7
13	http://pano.corp2.net	7
14	http://go.mail.ru/search?mailru=1&rch=e&mg=1&q=vkontakte.ru	7
15	http://epov.ru/	6

16	http://ru.wikipedia.org/wiki/ - , _ ... ° »_ ° ‡	6
17	http://www.google.ru/search?q=vkontakte.ru&sourceid=opera&ie=utf-8&oe=utf-8&channel=suggest	6
18	http://xn--http-43dx3aapciwdic5c/www.google.ru/search?client=opera&rls=ru&q= , ° , μ&sourceid=opera&ie=utf-8&oe=utf-8&channel=suggest	5
19	http://www.wtracker.org/	5
20	http://www.rating21.ru/index.php?option=com_content&view=article&id=57&Itemid=79	5
21	http://www.google.ru/search?client=opera&rls=ru&q= ‡ , + , + + °&sourceid=opera&ie=utf-8&oe=utf-8&channel=suggest	5
22	http://www.google.ru/search?q=drjynfrnt&sourceid=opera&ie=utf-8&oe=utf-8&channel=suggest	5
23	http://qseo.net/	5
24	http://webalta.ru/search?q=drjynfrnt	4
25	http://vk.com/sasha_rap	4
26	http://www.google.ru/search?client=opera&rls=ru&q= ° · μ ± ° ¶ ° μ+ , &sourceid=opera&ie=utf-8&oe=utf-8	4
27	http://www.world-mmo.com/	4
28	http://www.predistoria.org/forums/index.php?topic=67.15	4
29	http://www.google.ru/search?client=opera&rls=ru&q= € ° € » ‹ + ·+ %° μ &sourceid=opera&ie=utf-8&oe=utf-8&channel=suggest	4
30	http://www.google.ru/search?client=opera&rls=ru&q= ± ° ‡ μ+ ‡ , &sourceid=opera&ie=utf-8&oe=utf-8&channel=suggest	4
31	http://www.google.ru/search?q=www.vkontakte.ru&sourceid=opera&ie=utf-8&oe=utf-8&channel=suggest	4
32	http://www.google.com/search?client=opera&rls=ru&hl=ru&ie=utf-8&oe=utf-8&q=yandex.ru&sourceid=opera&lr=lang_ru	4
33	http://vkontakte.ru/ivan_epov	3
34	http://vkontakte.ru/club729179	3
35	http://www.google.ru/search?client=opera&rls=ru&q= · ° μ+ » ° , + μ &sourceid=opera&ie=utf-8&oe=utf-8&channel=suggest	3
36	http://www.google.ru/imgres?q= » ‡ °&um=1&hl=ru&newwindow=1&sa=n&biw=1295&bih=818&tbnid=bv6uxclddvzhgm:&imgrefurl=http://aeterna.qip.ru/ftell.php?link=ftells:8691&docid=qw3i-qagz_wtms&w=405&h=480&ei=k86rtt6mdk6k4gsx48tmaq&zoom=1&iact=rc&dur=414&page=1&tbnh=136&tbnw=130&start=0&ndsp=26&ved=1t:429,r:1,s:0&tx=65&ty=83	3
37	http://www.google.ru/search?q= ... &sourceid=opera&ie=utf-8&oe=utf-8&channel=suggest	3
38	http://ru.wikipedia.org/wiki/ _ · ° ± ° ° » ..._ „ ° »	3
39	http://mobissl.ru/	3
40	http://search.conduit.com/Results.aspx?q= μ μ · &start=0&hl=ru&SearchSource=1&SelfSearch=1&SearchType=&ctid=CT2127165&octid=CT2127165&meta=&FollowOn=True	3
41	http://www.google.ru/search?scient=psy-ab&hl=ru&newwindow=1&site=&source=hp&q= ° + μ » ° , + ° € + ° μ ·&btnk= + +google	3
42	http://search.qip.ru/search?query=tegos&from=opera	3
43	http://www.yandex.ru/	3
44	http://alpha.yaplakal.com/go/?http%3A%2F%2Fwww.epov.ru%2Findex.php%3Fsection%3Dmemoirs%26subsection%3Depov-ba	2
45	http://www.okade.ru	2
46	http://www.google.ru/search?q=saint&sourceid=opera&ie=utf-8&oe=utf-8&channel=suggest	2
47	http://go.mail.ru/search?mailru=1&rch=e&mg=1&q=vkontakte_ru&us=9	2
48	http://vkontakte.ru/sasha_rap?z=photo5767376_188270746/album5767376_0/rev	2
49	http://geotaku-no-fansu.tk/spravka-o-nesudimosti-uzbekistan.html	2
50	http://ru.wikipedia.org/wiki/ ,_ _	2
		3,916
		4,423

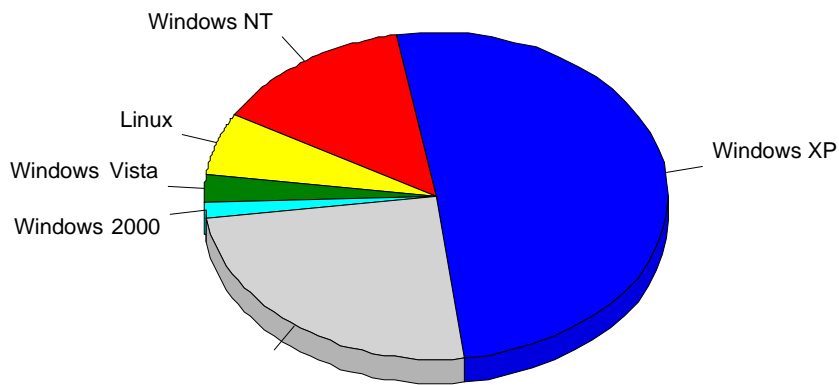
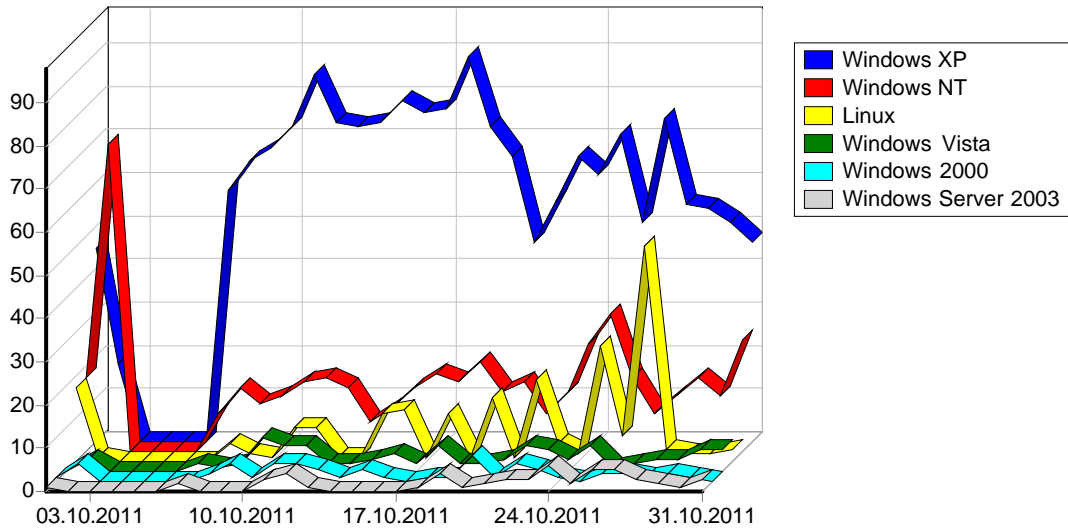


1	Yandex	712
		712



				%
1	Internet Explorer 6.x	6,702	791	22.08%
2	Opera	8,859	455	12.70%
3	Internet Explorer 7.x	4,146	423	11.81%
4	Safari	4,843	418	11.67%
5	Firefox	6,389	347	9.68%
6	Internet Explorer 8.x	5,747	285	7.95%
7	Mozilla/5.0 (compatible; bingbot/2.0; +http://www.bing.com/bingbot.htm)	552	246	6.87%
8	Mozilla/5.0 (compatible; Ezooms/1.0; ezooms.bot@gmail.com)	707	224	6.25%
9	Internet Explorer 9.x	1,822	77	2.15%
10	Internet Explorer 5.x	75	44	1.23%
11	Mozilla/5.0 (compatible; MJ12bot/v1.4.0; http://www.majestic12.co.uk/bot.php?+)	167	32	0.89%
12		308	20	0.56%
13	Microsoft Office Protocol Discovery	46	20	0.56%
14	Microsoft Office Existence Discovery	165	15	0.42%

15	Mozilla/5.0 (compatible; stat.cctld.ru/Bot; +http://stat.cctld.ru/bot.html)	13	13	0.36%
16	TestNutch/Nutch-1.2 (testing Nutch; http://nutch.apache.org; info@nutch.apache.org)	181	13	0.36%
17	Netscape 4.x	17	12	0.33%
18	Gecko) Ubuntu/11.04 Chromium/12.0.742.112 Chrome/12.0.742.112 Saf	11	10	0.28%
19	Gecko; Google Web Preview) Version/4.0 Mobile Sa	13	9	0.25%
20	Internet Explorer 2.x	18	9	0.25%
21	Microsoft Data Access Internet Publishing Provider Protocol Discovery	453	8	0.22%
22	Mozilla/5.0 (compatible; discobot/1.1; +http://discoveryengine.com/discobot.html)	7	7	0.20%
23	Internet Explorer 3.x	7	5	0.14%
24	Mail.RU/2.0	27	5	0.14%
25	Internet Explorer 4.x	7	4	0.11%
26	nutch-1.3/Nutch-1.3	8	4	0.11%
27	Mozilla/5.0 (compatible; Google Desktop/5.9.1005.12335; http://desktop.google.com/)	4	4	0.11%
28	Microsoft-WebDAV-MiniRedir/6.1.7600	24	3	0.08%
29	Mozilla/4.0 (compatible; MS FrontPage 12.0)	141	3	0.08%
30	MSFrontPage/12.0	141	3	0.08%
31	Microsoft-WebDAV-MiniRedir/6.0.6002	29	3	0.08%
32	HttpComponents/1.1	3	3	0.08%
33	Gecko) Version/5.0.2 Mobile/8	28	3	0.08%
34	Gecko) Version/4.0.5 Mobile/8B11	33	3	0.08%
35	Gecko) Version/4.0 Mobile Safa	30	2	0.06%
36	http://\xef\xee\xe8\xf1\xea\xee\xe2.\xf0\xf4 (BOT-V1.4)	24	2	0.06%
37	TencentTraveler 4.0	2	2	0.06%
38	Gecko) Version/4.0.4 Mobile/7B405 S	50	2	0.06%
39	JUC (Linux; U; 2.2.1; zh-cn; HTC_Incredible_S; 480*800) UCWEB7.9.3.103/139/800	17	2	0.06%
40	Dillo/0.7.3	2	2	0.06%
41	Mozilla/4.7 (compatible; OffByOne; Windows 2000) Webster Pro V3.4	5	2	0.06%
42	Mail.Ru/1.0	1,296	2	0.06%
43	FlightDeckReportsBot/2.0 (http://www.flightdeckreports.com/pages/bot)	4	2	0.06%
44	SAMSUNG-GT-S5230/S523MREIL2 SHP/VPP/R5 Jasmine/1.0 Nextreaming SMM-MMS/1.2.0 profile/MIDP-2.1 configuration/CLDC-1.1	29	2	0.06%
45	pirst; MSIE 8.0;	2	2	0.06%
46	Mozilla/5.0 (compatible; pmoz.info ODP link checker; +http://pmoz.info/doc/botinfo.htm)	2	2	0.06%
47	Gecko) Version/5.0.2 Mobile/8J2 Safa	30	2	0.06%
48	Gecko) Version/5.0.2 Mobile/8L1 Safa	33	2	0.06%
49	SAMSUNG-GT-S5230/S523MREJF2 SHP/VPP/R5 Jasmine/1.0 Nextreaming SMM-MMS/1.2.0 profile/MIDP-2.1 configuration/CLDC-1.1	15	1	0.03%
50	Ruby	1	1	0.03%
		43,235	3,551	99.11%
		43,698	3,583	100.00%



				%
1	Windows XP	23,752	1,726	50.75%
2		6,427	727	21.38%
3	Windows NT	9,400	476	14.00%
4	Linux	617	213	6.26%
5	Windows Vista	2,422	93	2.73%
6	Windows 2000	181	53	1.56%
7	Windows Server 2003	651	52	1.53%
8	Windows ME	37	23	0.68%
9	Windows 95	40	15	0.44%
10	Mac OS	83	8	0.24%
11	Sun OS	55	6	0.18%
12	Windows 98	14	5	0.15%
13	Windows 3.x	12	3	0.09%
14	Windows CE	7	1	0.03%
		43,698	3,401	100.00%