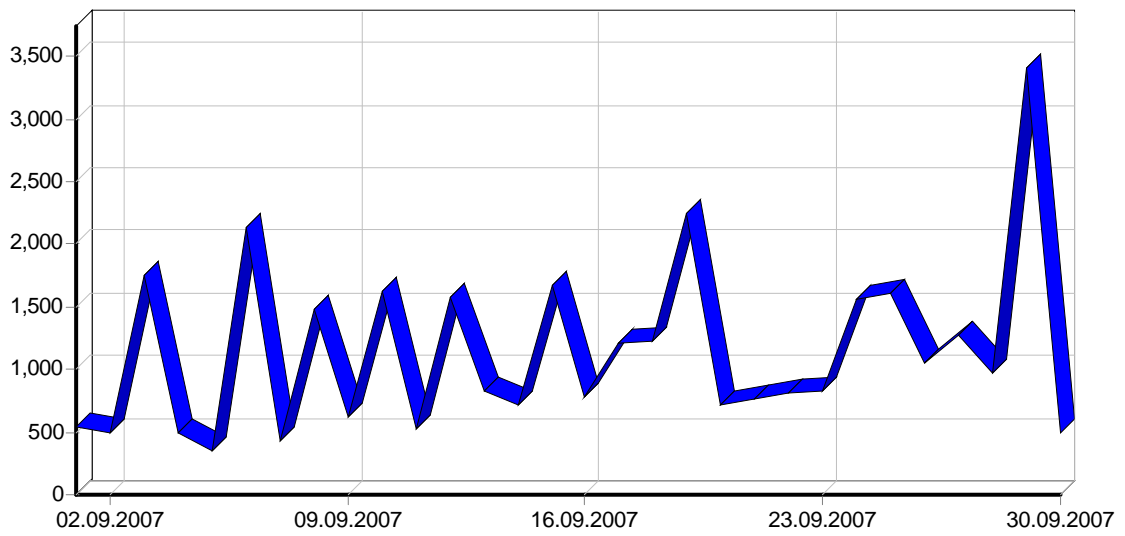
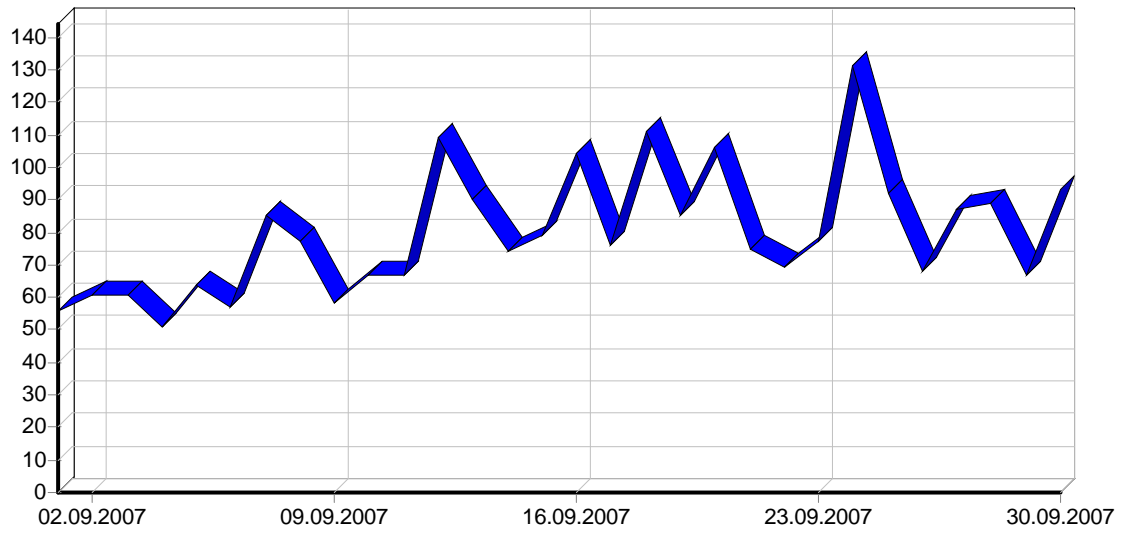
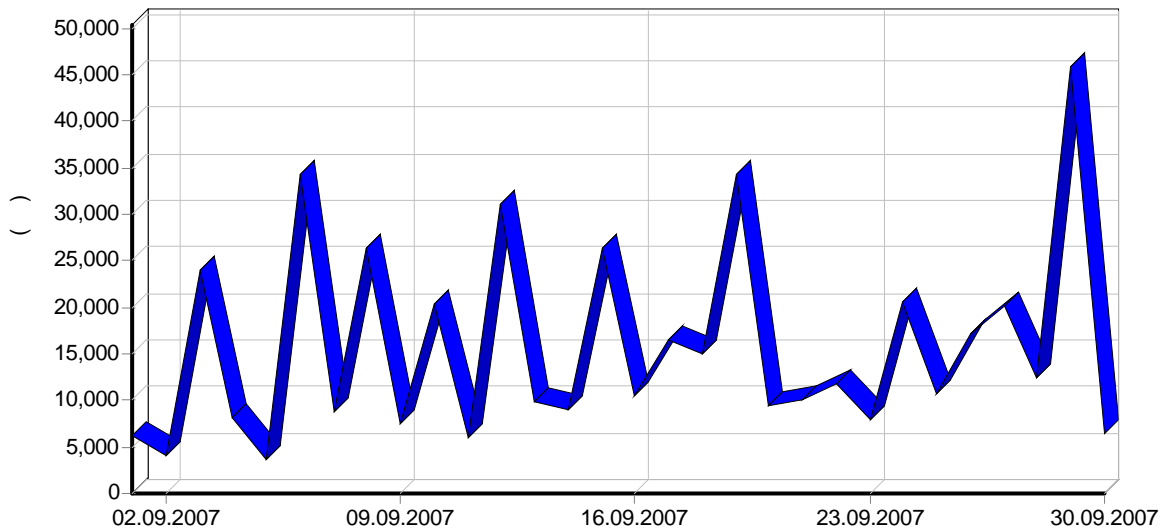
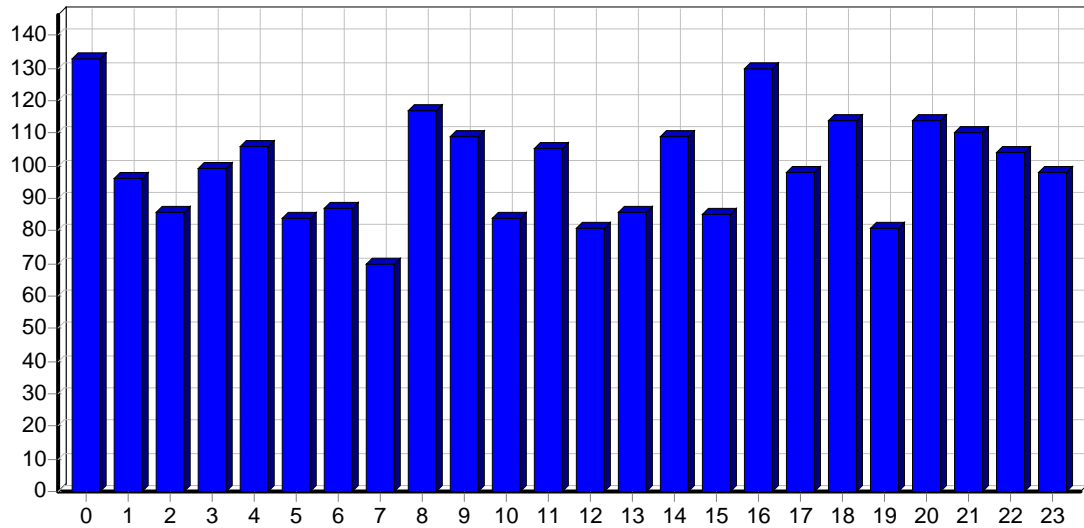


	34,162
	1,138
	14.32
	5,036
	3,120
	11,420
	380
	4.79
	2,386
	79
IP-	1,133
	463.27
	15.44
	13.89
	198.82

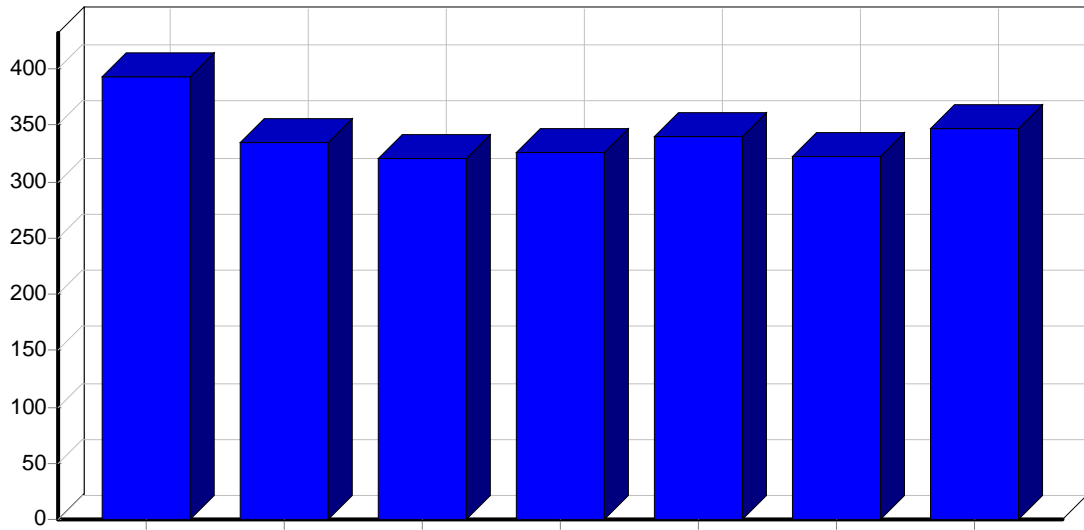




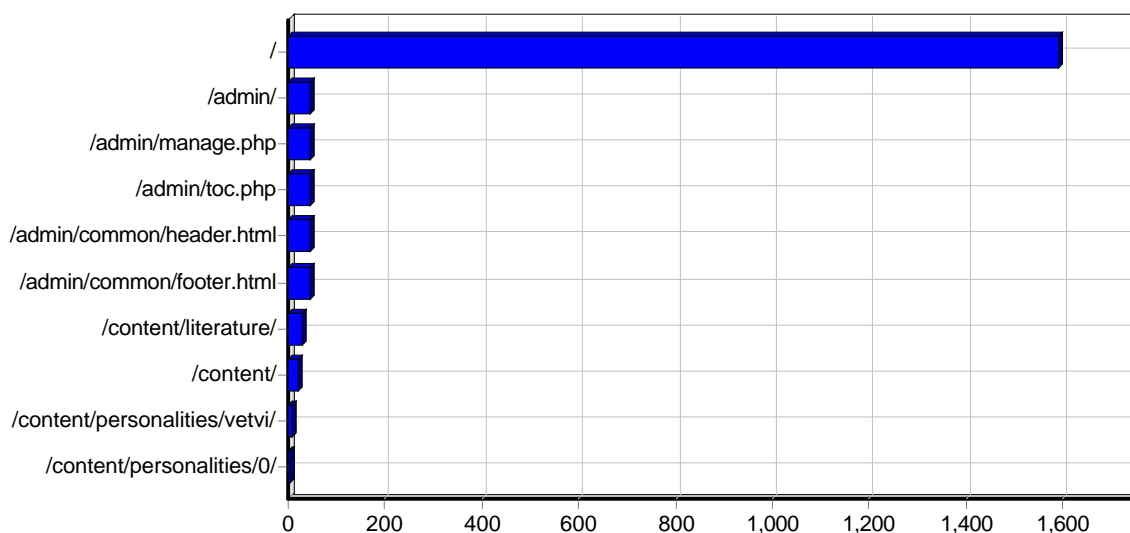
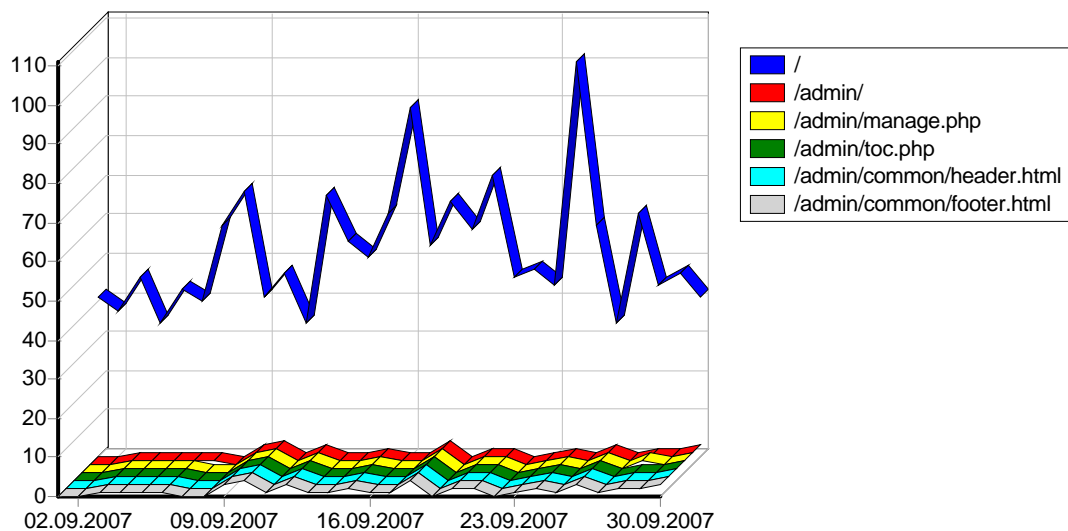
					()
01.09.2007	543	265	56	05:58	6,173
02.09.2007	490	244	61	04:49	4,119
03.09.2007	1,746	1,252	61	02:39	24,057
04.09.2007	492	135	51	01:19	8,221
05.09.2007	347	251	64	01:23	3,618
06.09.2007	2,133	359	57	03:00	34,175
07.09.2007	425	166	85	03:02	8,721
08.09.2007	1,485	757	77	03:09	26,249
09.09.2007	622	257	58	05:29	7,596
10.09.2007	1,630	316	67	03:49	20,349
11.09.2007	518	110	67	07:39	5,997
12.09.2007	1,574	710	109	03:08	31,054
13.09.2007	834	124	90	02:14	9,955
14.09.2007	724	139	74	04:03	8,966
15.09.2007	1,679	211	79	02:29	26,330
16.09.2007	773	253	104	03:41	10,591
17.09.2007	1,206	406	76	13:06	16,481
18.09.2007	1,222	268	111	04:01	15,036
19.09.2007	2,251	773	85	04:05	34,232
20.09.2007	713	215	106	02:39	9,452
21.09.2007	759	217	75	03:29	10,084
22.09.2007	815	204	69	03:40	11,881
23.09.2007	822	129	77	07:52	7,973
24.09.2007	1,560	736	131	06:31	20,488
25.09.2007	1,613	243	92	10:04	10,766
26.09.2007	1,048	522	68	18:45	17,154
27.09.2007	1,275	328	87	01:41	20,058
28.09.2007	971	360	89	08:55	12,404
29.09.2007	3,402	1,220	67	03:23	45,749
30.09.2007	490	250	93	06:22	6,446
	34,162	11,420	2,386	05:05	474,390



			()
00:00 - 00:59	1,904	133	23,898
01:00 - 01:59	1,382	96	24,284
02:00 - 02:59	2,136	86	29,373
03:00 - 03:59	879	99	9,723
04:00 - 04:59	1,062	106	9,275
05:00 - 05:59	1,146	84	14,704
06:00 - 06:59	763	87	8,668
07:00 - 07:59	2,541	70	33,010
08:00 - 08:59	4,715	117	70,673
09:00 - 09:59	1,063	109	13,135
10:00 - 10:59	808	84	10,627
11:00 - 11:59	1,081	105	15,634
12:00 - 12:59	878	81	10,936
13:00 - 13:59	1,748	86	24,595
14:00 - 14:59	985	109	12,171
15:00 - 15:59	1,033	85	12,952
16:00 - 16:59	1,329	130	16,933
17:00 - 17:59	976	98	13,882
18:00 - 18:59	2,406	114	29,054
19:00 - 19:59	1,439	81	19,761
20:00 - 20:59	971	114	13,747
21:00 - 21:59	895	110	28,654
22:00 - 22:59	1,086	104	14,622
23:00 - 23:59	936	98	14,066
	34,162	2,386	474,390

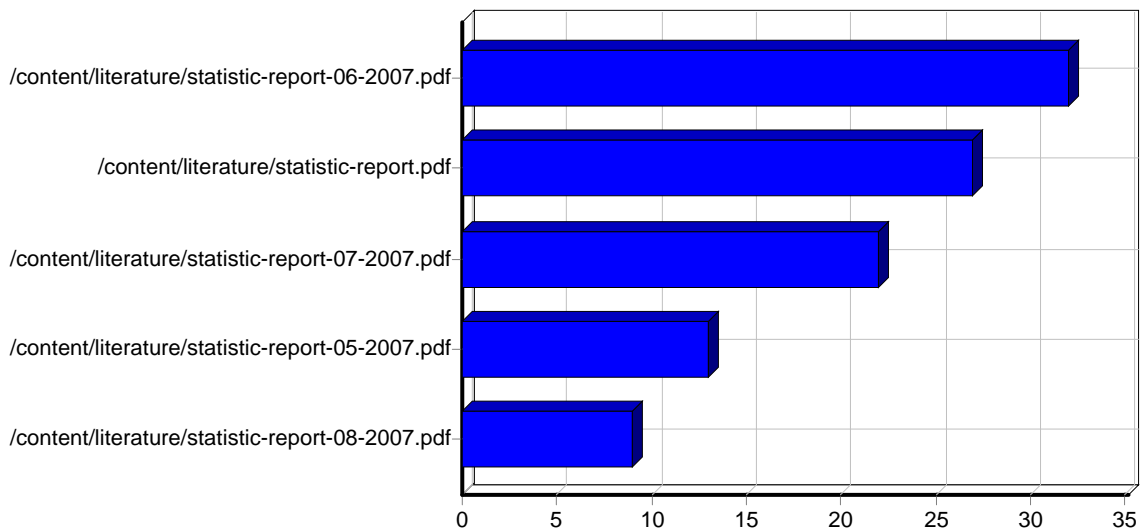
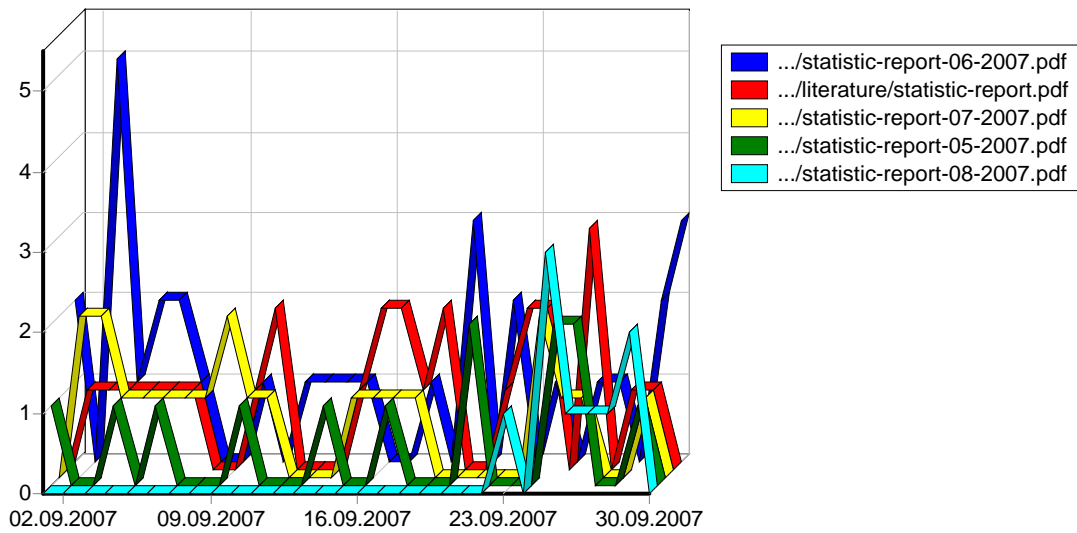


			()
	3,197	393	36,727
	6,142	335	81,377
	3,845	321	40,022
	5,220	326	86,059
	4,955	340	73,641
	2,879	323	40,177
	7,924	348	116,383
	34,162	2,386	474,390



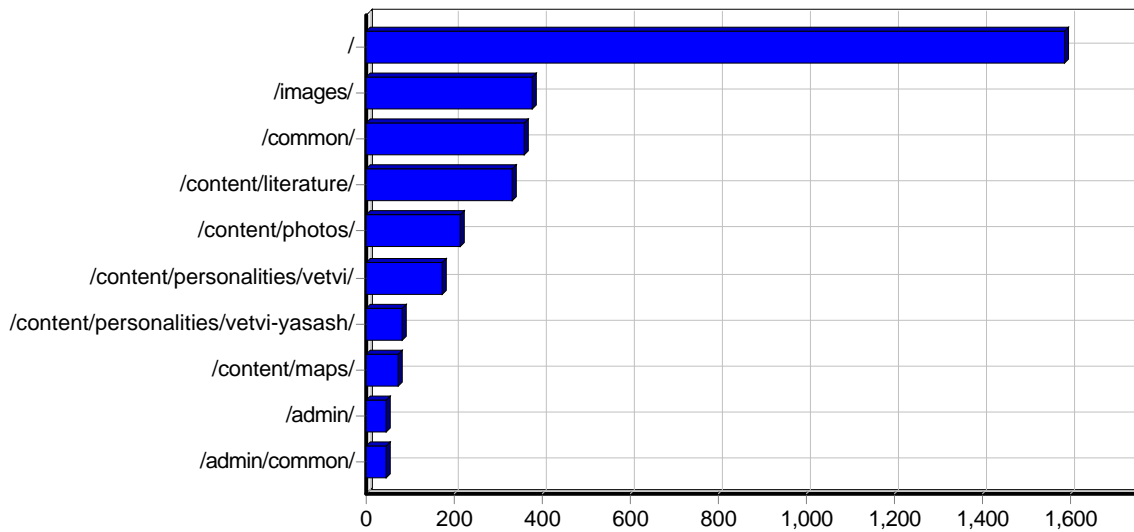
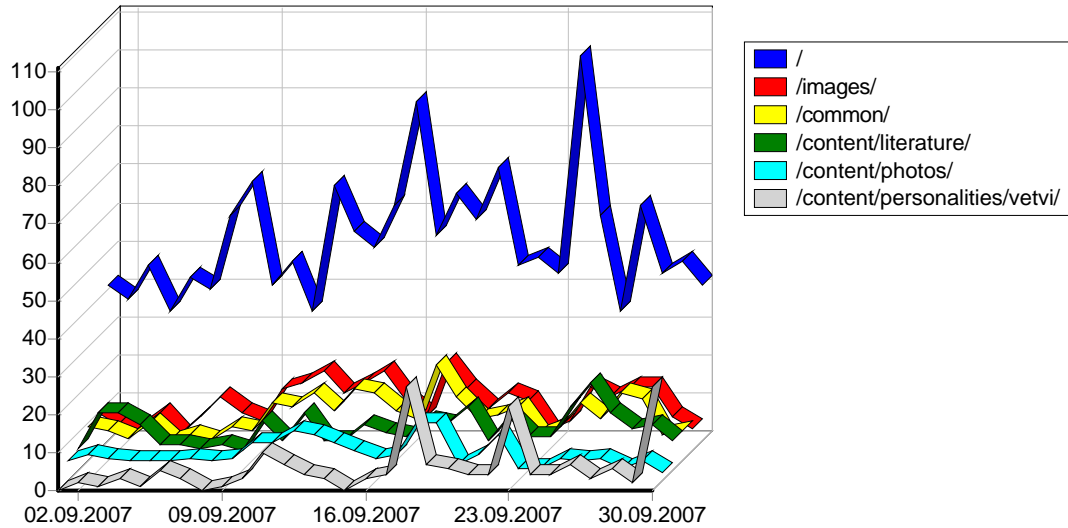
					()
1	http://www.epov.ru/	10,787	0	1,589	119,683
2	http://www.epov.ru/admin/	87	0	45	37
3	http://www.epov.ru/admin/manage.php	131	0	45	11,032
4	http://www.epov.ru/admin/toc.php	50	0	44	53
5	http://www.epov.ru/admin/common/header.html	48	0	44	2
6	http://www.epov.ru/admin/common/footer.html	48	0	44	3
7	http://www.epov.ru/content/literature/	31	0	28	0
8	http://www.epov.ru/content/	54	0	19	16
9	http://www.epov.ru/content/personalities/vetvi/	10	0	10	0
10	http://www.epov.ru/content/personalities/0/	5	0	5	0
11	http://www.epov.ru/content/personalities/10vs/	5	0	5	0
12	http://www.epov.ru/content/personalities/vetvi-yasash/	4	0	4	0
13	http://www.epov.ruhttp://www.epov.ru/	4	0	4	212

14	http://www.epov.ru/content/personalities/2/	3	0	3	0
15	http://www.epov.ru/content/personalities/1/	3	0	3	0
16	http://www.epov.ru/content/personalities/9vi/	2	0	2	0
17	http://www.epov.ru/content/personalities/7/	1	0	1	0
18	http://www.epov.ru/content/personalities/9sn/	1	0	1	0
19	http://www.epov.ru/content/personalities/6/	1	0	1	0
20	http://www.epov.ru/content/personalities/10vi/	1	0	1	0
21	http://www.epov.ru/content/personalities/10sn/	1	0	1	0
22	http://www.epov.ru/.	1	0	1	11
23	http://www.epov.ru/content/personalities/5/	1	0	1	0
24	http://www.epov.ru/content/personalities/4/	1	0	1	0
25	http://www.epov.ru/content/personalities/3/	1	0	1	0
		11,281	0	-	131,055



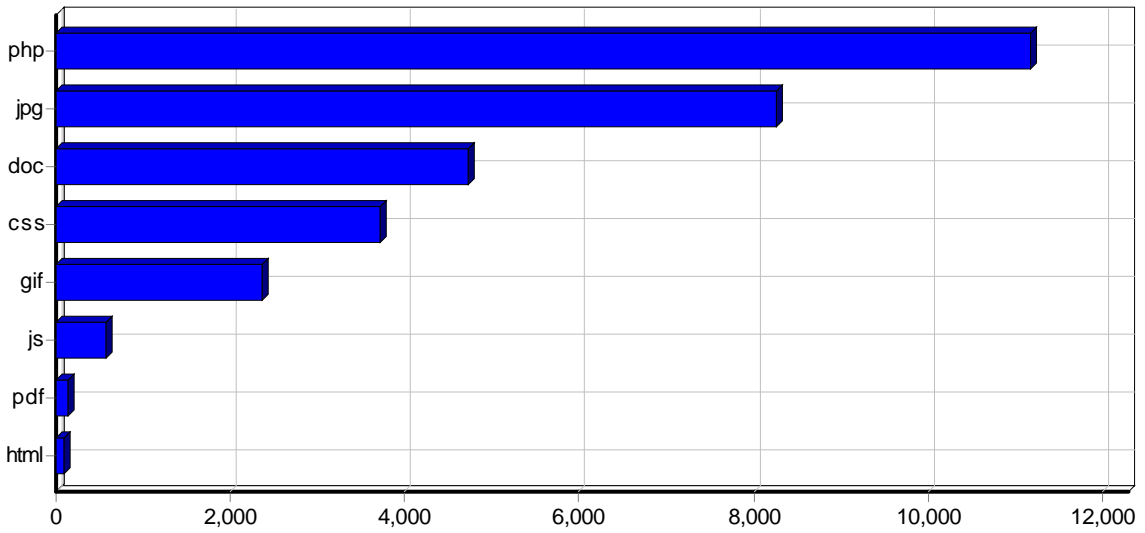
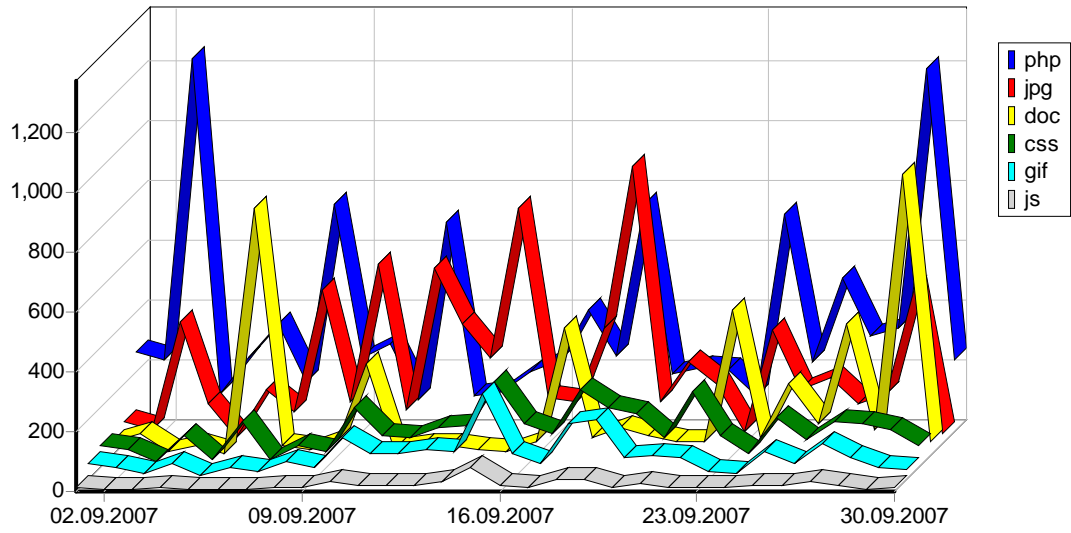
					()
1	http://www.epov.ru/content/literature/statistic-report-06-2007.pdf	42	8	32	2,393

2	http://www.epov.ru/content/literature/statistic-report.pdf	39	9	27	4,544
3	http://www.epov.ru/content/literature/statistic-report-07-2007.pdf	27	4	22	1,950
4	http://www.epov.ru/content/literature/statistic-report-05-2007.pdf	16	1	13	808
5	http://www.epov.ru/content/literature/statistic-report-08-2007.pdf	12	3	9	1,177
		136	25	-	10,874

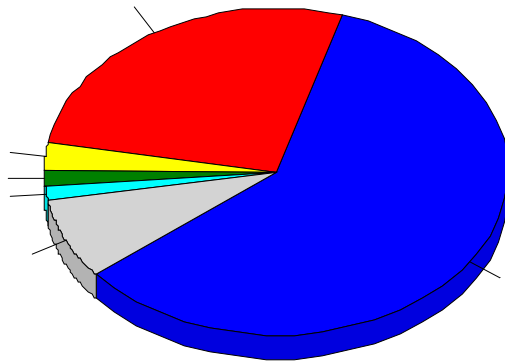
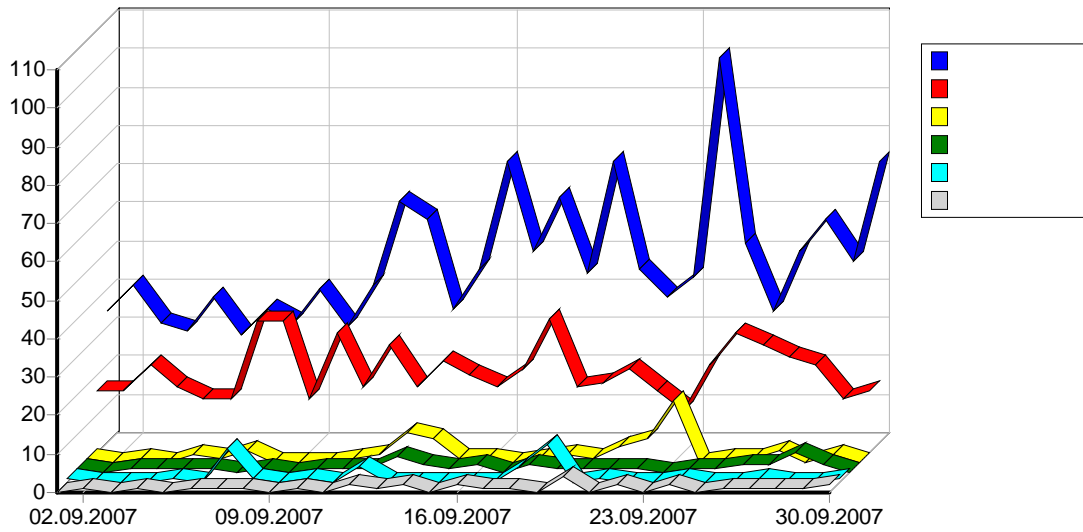


					()
1	http://www.epov.ru/	10,787	0	1,589	119,683
2	http://www.epov.ru/images/	4,282	3	380	22,924
3	http://www.epov.ru/common/	4,024	0	358	5,658
4	http://www.epov.ru/content/literature/	1,050	31	331	74,023
5	http://www.epov.ru/content/photos/	5,352	5	212	157,277
6	http://www.epov.ru/content/personalities/vetvi/	518	22	173	9,188
7	http://www.epov.ru/content/personalities/vetvi-yasash/	215	13	83	3,591
8	http://www.epov.ru/content/maps/	298	0	71	17,993
9	http://www.epov.ru/admin/	268	0	46	11,122

10	http://www.epov.ru/admin/common/	356	0	44	58
11	http://www.epov.ru/content/personalities/6/	93	0	24	903
12	http://www.epov.ru/admin/images/	23	0	23	1
13	http://www.epov.ru/content/personalities/5/	96	0	22	740
14	http://www.epov.ru/content/personalities/8vs/	50	0	21	385
15	http://www.epov.ru/content/personalities/9vi/	166	1	19	2,720
16	http://www.epov.ru/content/	54	0	19	16
17	http://www.epov.ru/content/personalities/4/	124	1	18	716
18	http://www.epov.ru/content/personalities/10vs/	583	0	18	7,083
19	http://www.epov.ru/content/personalities/9vs/	170	0	18	2,083
20	http://www.epov.ru/content/personalities/3/	64	0	17	475
21	http://www.epov.ru/content/personalities/0/	25	0	17	205
22	http://www.epov.ru/content/broshura/	378	0	17	11,938
23	http://www.epov.ru/content/personalities/10sn/	223	0	15	1,922
24	http://www.epov.ru/content/personalities/2/	29	0	14	192
25	http://www.epov.ru/content/personalities/8sn/	48	0	13	797
26	http://www.epov.ru/content/personalities/8vi/	34	0	12	291
27	http://www.epov.ru/content/personalities/1/	17	0	12	120
28	http://www.epov.ru/content/personalities/10vp/	306	0	11	2,893
29	http://www.epov.ru/content/personalities/9sn/	91	1	11	886
30	http://www.epov.ru/content/personalities/10vi/	460	0	10	8,600
31	http://www.epov.ru/content/personalities/10vn/	337	1	10	3,214
32	http://www.epov.ru/content/personalities/9vn/	126	0	9	1,478
33	http://www.epov.ru/content/personalities/8vn/	49	0	9	466
34	http://www.epov.ru/content/personalities/7/	73	0	8	881
35	http://www.epov.ru/content/personalities/10vm/	88	0	7	744
36	http://www.epov.ru/content/personalities/9vp/	82	0	7	810
37	http://www.epov.ru/content/personalities/8vp/	20	0	6	164
38	http://www.epov.ru/content/personalities/7sm/	18	0	6	331
39	http://www.epov.ru/content/personalities/9vm/	9	0	6	81
40	http://www.epov.ru/content/personalities/7ss/	21	0	6	255
41	http://www.epov.ru/content/personalities/7sn/	25	0	5	292
42	http://www.epov.ru/content/personalities/8vm/	5	0	5	40
43	http://www.epov.ru http://www.epov.ru/	4	0	4	212
44	http://www.epov.ru/	1	0	1	11
		31,042	78	-	473,476

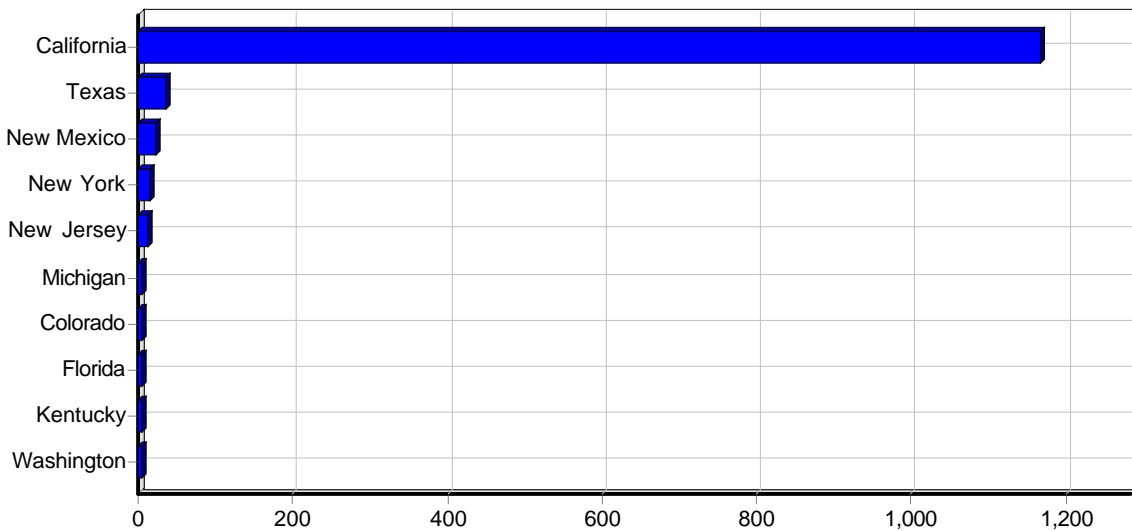


				()
1	php	11,185	0	131,049
2	jpg	8,261	8	219,628
3	doc	4,726	45	105,558
4	css	3,712	0	5,133
5	gif	2,354	0	648
6	js	572	0	577
7	pdf	136	25	10,874
8	html	96	0	5
		31,042	78	473,476



				%	()
1		3,960	1,423	59.64%	60,175
2		25,837	637	26.70%	355,442
3		606	64	2.68%	7,846
4		629	37	1.55%	9,996
5		44	35	1.47%	477
6		674	29	1.22%	8,943
7		921	21	0.88%	12,096
8		180	17	0.71%	3,273
9		284	13	0.54%	3,936
10		272	11	0.46%	2,745
11		10	10	0.42%	55
12		9	8	0.34%	61
13		155	6	0.25%	2,365
14		8	5	0.21%	234

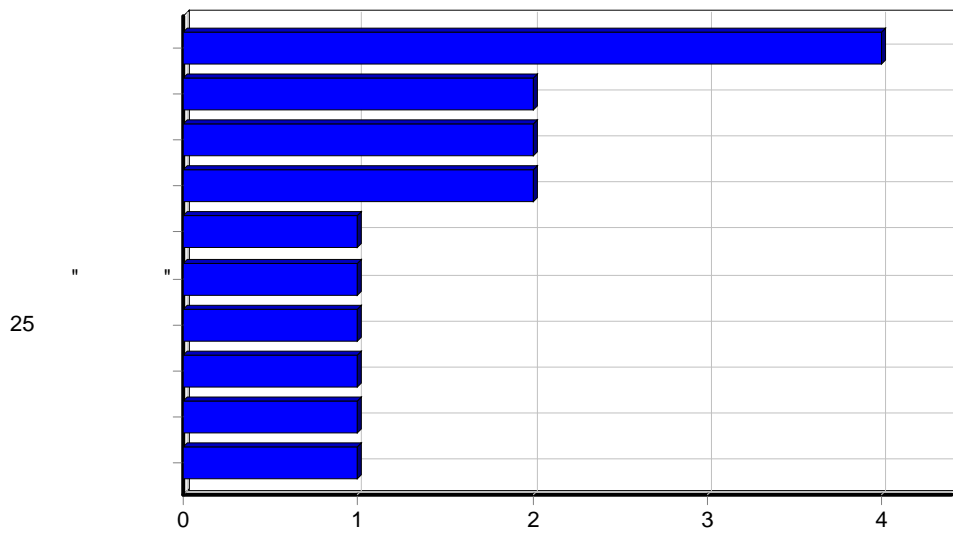
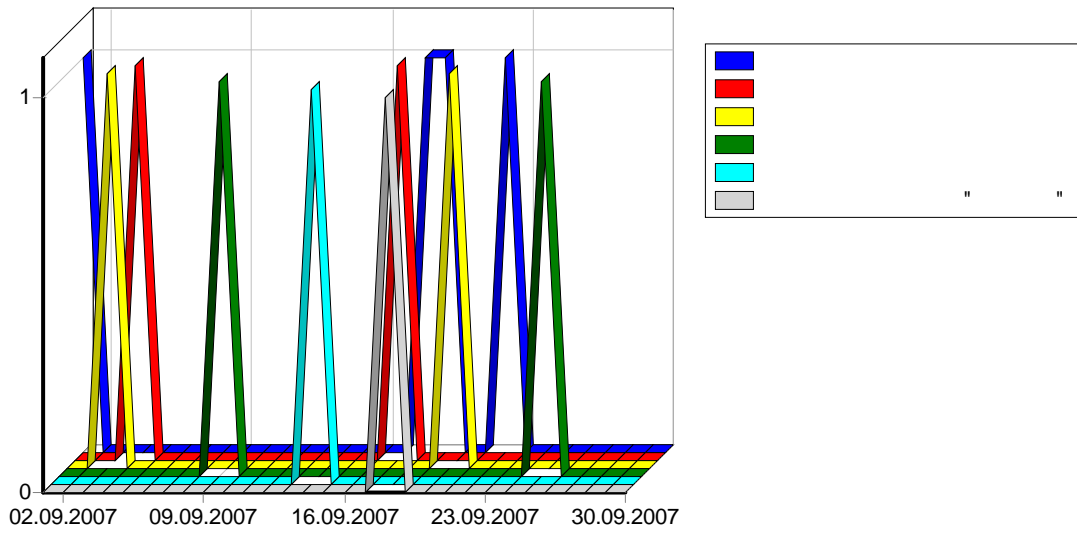
15		10	5	0.21%	249
16		8	5	0.21%	48
17		87	5	0.21%	1,349
18		31	4	0.17%	383
19		7	4	0.17%	159
20		49	4	0.17%	628
21		33	4	0.17%	338
22		4	4	0.17%	22
23		3	3	0.13%	16
24		217	3	0.13%	2,039
25		18	3	0.13%	431
26		16	3	0.13%	184
27		3	3	0.13%	16
28		2	2	0.08%	76
29		16	2	0.08%	180
30		2	2	0.08%	9
31		1	1	0.04%	5
32		1	1	0.04%	5
33		1	1	0.04%	5
34		1	1	0.04%	5
35		1	1	0.04%	5
36		1	1	0.04%	5
37		4	1	0.04%	48
38		1	1	0.04%	5
39		14	1	0.04%	133
40		14	1	0.04%	86
41		1	1	0.04%	5
42		13	1	0.04%	185
43		1	1	0.04%	5
44		13	1	0.04%	101
		34,162	2,386	100.00%	474,390



				()
1	California	1,713	1,167	22,553
2	Texas	1,340	35	21,475
3	New Mexico	22	22	125
4	New York	241	15	5,396
5	New Jersey	14	14	0
6	Michigan	6	6	33
7	Colorado	6	6	86
8	Florida	7	6	153
9	Kentucky	5	5	27
10	Washington	5	5	27
11	Minnesota	6	4	236
12	Georgia	118	4	2,303
13	Ohio	4	4	22
14	District of Columbia	3	3	0
15	Connecticut	3	3	16
16	Wisconsin	3	3	16
17	Pennsylvania	3	3	16
18	Indiana	3	3	16
19	North Carolina	4	2	208
20	Illinois	2	2	11
21	Mississippi	2	2	11
22	New Hampshire	2	2	11
23	Alabama	2	2	11
24	Virginia	1	1	5
25	Idaho	1	1	5
26	Nebraska	1	1	5
27	Nevada	1	1	5
28	South Carolina	1	1	5
29	Kansas	1	1	5
		3,520	1,324	52,796

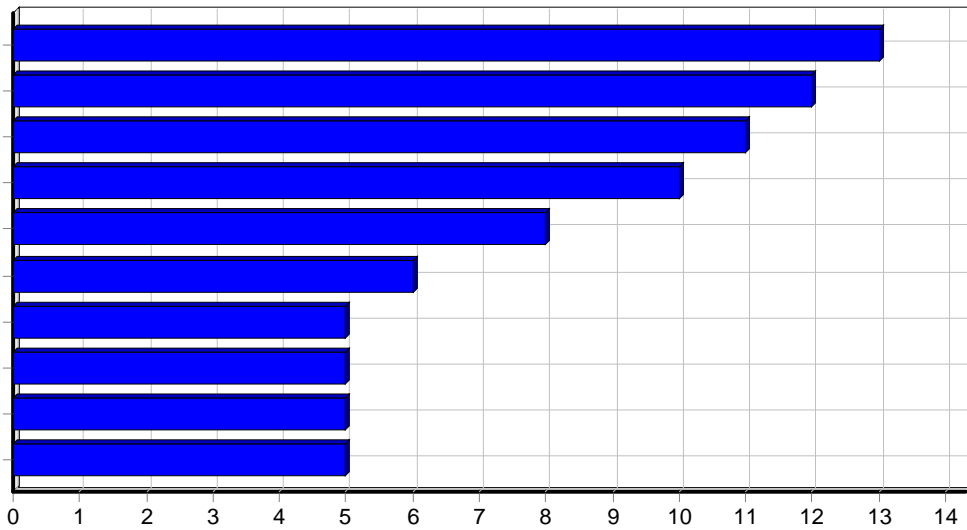
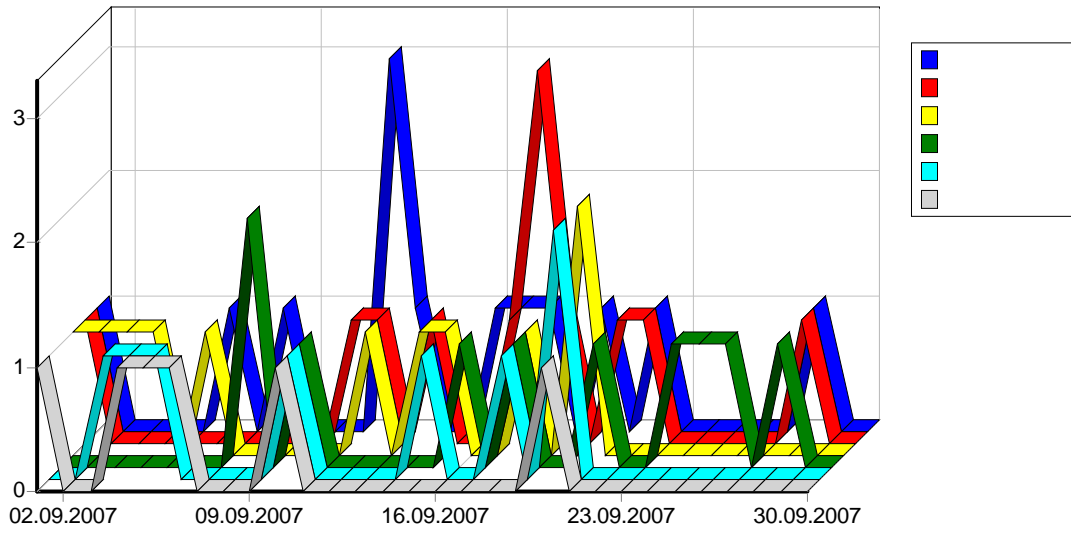
				()
1	Sunnyvale, California,	1,089	992	14,708
2	Moscow,	18,552	314	226,783
3	Mountain View, California,	587	161	7,241
4	Novosibirsk,	1,913	63	40,494
5	Perm,	307	47	9,114
6	Frankfurt Am Main,	64	46	1,318
7	Saint Petersburg,	604	41	7,509
8	Albuquerque, New Mexico,	22	22	125
9	San Antonio, Texas,	21	21	10
10	Stockholm,	23	20	292
11	Kiev,	249	20	4,859
12	Chita,	769	19	11,600
13	Tokyo,	917	17	12,074
14	Sayreville, New Jersey,	14	14	0
15	Penza,	101	12	2,216
16	Irkutsk,	312	10	5,610

17	Krasnodar,	110	8	2,004
18	Dallas, Texas,	1,312	7	21,318
19	Tomsk,	332	7	6,519
20	Krasnoyarsk,	124	7	1,523
21	Almaty,	99	7	1,713
22	Karlskrona,	6	6	81
23	Sollentuna,	12	6	65
24	Riga,	155	6	2,365
25	New York, New York,	231	6	5,228
26	Amur,	288	5	4,970
27	Yaroslavl,	142	4	2,110
28	Kiel,	165	4	1,724
29	Tampa, Florida,	5	4	142
30	Volgograd,	107	4	1,268
31	Murmansk,	43	4	684
32	Ulan-Ude,	59	4	659
33	Tbilisi,	217	3	2,039
34	Kemerovo,	4	3	346
35	Donetsk,	202	3	2,794
36	Detroit, Michigan,	3	3	16
37	Hicksville, New York,	3	3	16
38	Kharkiv,	3	3	177
39	Santiago,	3	3	16
40	Vladimir,	122	3	1,627
41	Paris,	63	3	765
42	Oslo,	15	3	255
43	Louisville, Kentucky,	3	3	16
44	Washington, District of Columbia,	3	3	0
45	Yekaterinburg,	15	3	349
46	Mainz,	122	3	734
47	Minsk,	32	3	302
48	Rome,	6	3	37
49	Leipzig,	3	3	29
50	Roubaix,	6	3	219
		29,559	1,962	406,086
		32,194	2,221	448,309



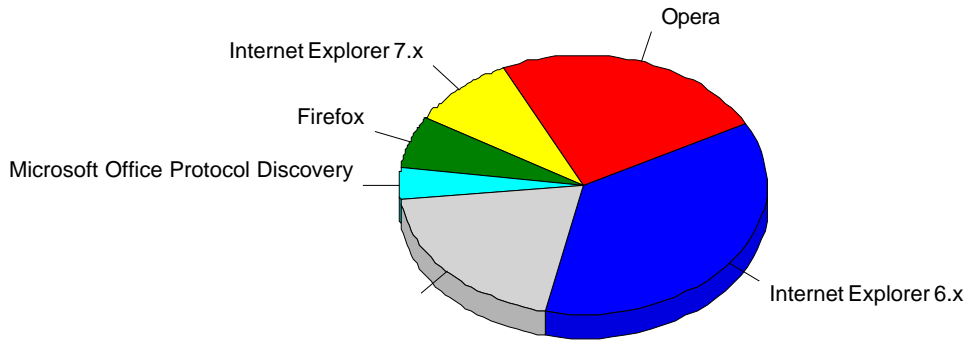
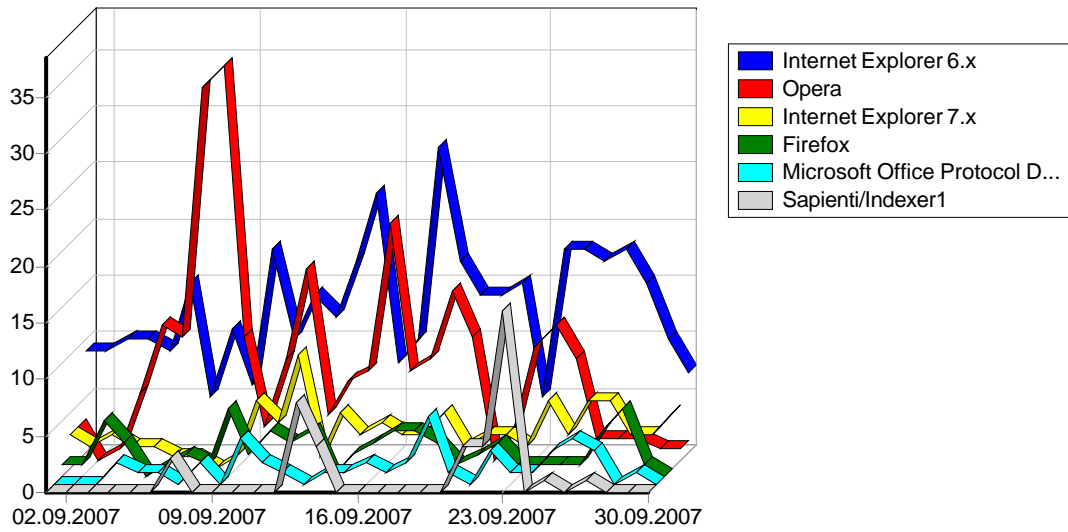
1		4
2		2
3		2
4		2
5		1
6	" "	1
7	25	1
8		1
9		1
10		1
11		1
12		1
13		1
14		1

15		1
16		1
17		1
18		1
19		1
20		1
21		1
22		1
23		1
24		1
25		1
26	. - , . , 6	1
27		1
28		1
29		1
30		1
31		1
32		1
33		1
34		1
35		1
36		1
37		1
38		1
39	. .	1
40		1
41		1
42		1
43		1
44		1
45		1
46		1
47	. .	1
48		1
49		1
50		1
		56
		240



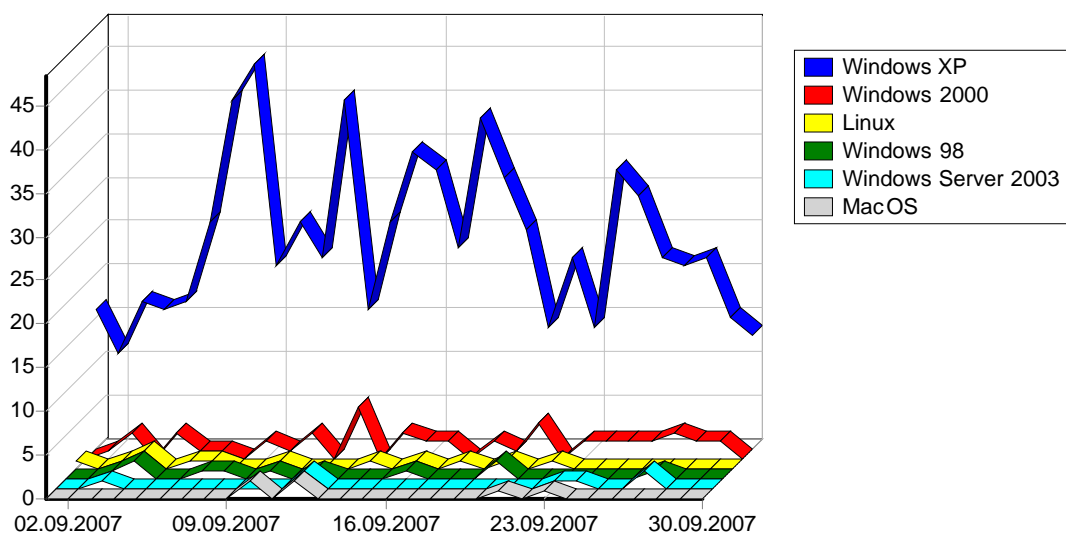
1		13
2		12
3		11
4		10
5		8
6		6
7		5
8		5
9		5
10		5
11		5
12		4
13		4
14		4
15		4
16		3

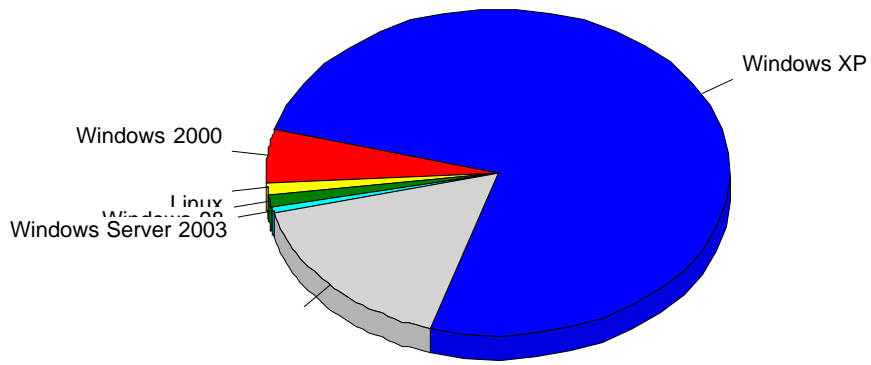
17		3
18		3
19		3
20		3
21		3
22		3
23		3
24		3
25		3
26		3
27		3
28		3
29		3
30		3
31		3
32		3
33	„ ° »	2
34		2
35	„ ,	2
36		2
37		2
38		2
39		2
40		2
41		2
42		2
43		2
44		2
45		2
46		2
47		2
48		2
49		2
50		2
		188
		675



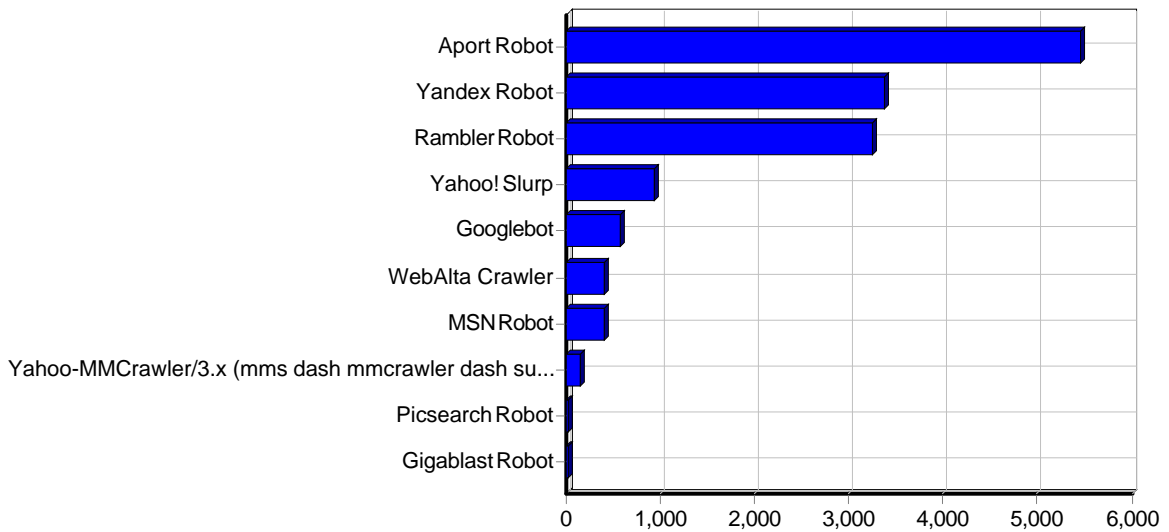
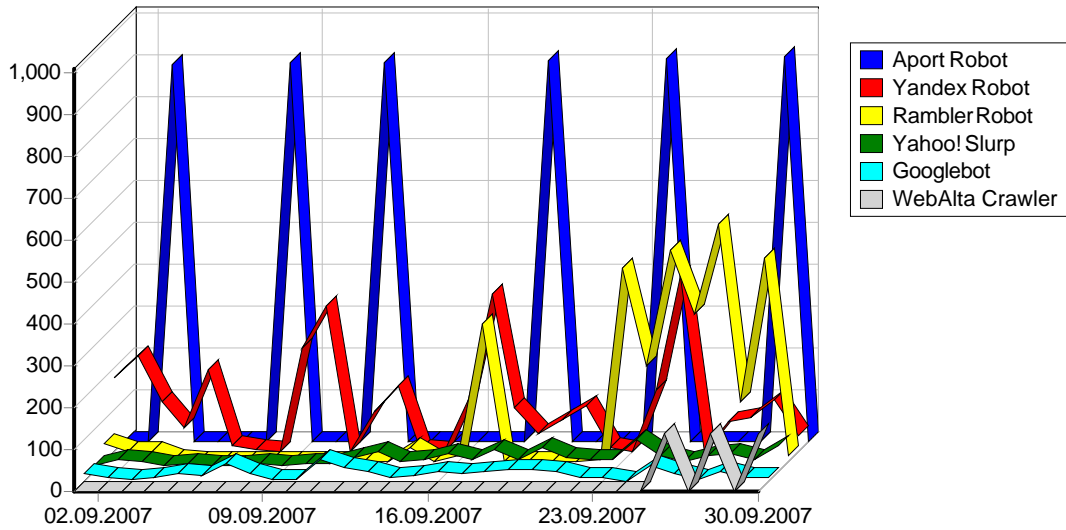
				%
1	Internet Explorer 6.x	11,494	391	36.04%
2	Opera	1,085	266	24.52%
3	Internet Explorer 7.x	2,698	101	9.31%
4	Firefox	1,514	70	6.45%
5	Microsoft Office Protocol Discovery	62	43	3.96%
6	Sapieni/Indexer1	58	41	3.78%
7	Microsoft Data Access Internet Publishing Provider Protocol Discovery	268	40	3.69%
8	Internet Explorer 5.x	231	27	2.49%
9	Microsoft-WebDAV-MiniRedir/5.1.2600	118	16	1.47%
10		19	14	1.29%
11	Konqueror	7	7	0.65%
12	Safari	94	6	0.55%
13	;	21	6	0.55%
14	compatible; MSIE 6.0; Windows NT 5.1	5	5	0.46%

15	Mozilla/5.0 (compatible; Google Desktop)	5	5	0.46%
16	Mail.Ru/1.0	1,626	4	0.37%
17	Microsoft Office Existence Discovery	3	3	0.28%
18	Mozilla	10	3	0.28%
19	Netscape 4.x	89	3	0.28%
20	Mozilla/2.0 (compatible; MS FrontPage 4.0)	4	2	0.18%
21	Microsoft-WebDAV-MiniRedir/6.0.6000	12	2	0.18%
22	Mozilla/4.0 (compatible;)	13	2	0.18%
23	Download Master	8	2	0.18%
24	Netscape 5.x	2	2	0.18%
25	Microsoft Data Access Internet Publishing Provider DAV	4	2	0.18%
26	MSFrontPage/4.0	4	2	0.18%
27	Microsoft Data Access Internet Publishing Provider Cache Manager	4	2	0.18%
28	DataparkSearch (+http://dataparksearch.org/bot) @ http://www.43n39e.ru/	2	1	0.09%
29	Rnijzdmwcrghjibxwtmerl	1	1	0.09%
30	PHP version tracker (http://www.nexen.net/phpversion/bot.php)	2	1	0.09%
31	Avant Browser (http://www.avantbrowser.com)	1	1	0.09%
32	Wget	1	1	0.09%
33	Avant Browser	8	1	0.09%
34	contype	1	1	0.09%
35	ePochta_Extractor/4.0	2	1	0.09%
36	Sapienti/Indexer2	1	1	0.09%
37	MJ12bot/v1.2.0 (http://majestic12.co.uk/bot.php?+)	16	1	0.09%
38	Java/1.5.0_08	3	1	0.09%
39	MSRBOT (http://research.microsoft.com/research/sv/msrbot/	2	1	0.09%
40	MSFrontPage/5.0	3	1	0.09%
41	Mozilla/2.0 (compatible; MS FrontPage 5.0)	3	1	0.09%
42	Mozilla/5.0 (compatible; Mypagesbot/1.0; http://www.mypages.com/about/webmasters)	1	1	0.09%
43	Gecko/20060910 SeaMonkey/1.0.5	13	1	0.09%
44	Mozilla/5.0 (compatible; BlogRefsBot/0.1; http://www.blogrefs.com/about/bloggers)	1	1	0.09%
45	Gecko/20070310 Iceweasel/2.0.0.3 (Debian-2.0.0.3-1)	1	1	0.09%
		19,520	1,085	100.00%





				%
1	Windows XP	13,887	725	75.44%
2		2,387	129	13.42%
3	Windows 2000	2,019	50	5.20%
4	Linux	22	12	1.25%
5	Windows 98	345	11	1.14%
6	Windows Server 2003	555	7	0.73%
7	Mac OS	94	6	0.62%
8	Windows Vista	109	6	0.62%
9	FreeBSD	73	6	0.62%
10	Windows NT	9	3	0.31%
11	Windows ME	15	3	0.31%
12	Sun OS	2	2	0.21%
13	Windows 95	2	1	0.10%
14	Windows Win32s	1	0	0.00%
		19,520	961	100.00%



1	Aport Robot	5,463
2	Yandex Robot	3,374
3	RamblerRobot	3,245
4	Yahoo! Slurp	941
5	Googlebot	563
6	WebAlta Crawler	412
7	MSNRobot	396
8	Yahoo-MMcrawler/3.x (mms dash mmcrawler dash support at yahoo dash inc dot com)	148
9	Picsearch Robot	23
10	Gigablast Robot	22
11	Mozilla/5.0 (Twiceler-0.9 http://www.cuill.com/twiceler/robot.html)	22
12	Entireweb Robot	12
13	Alexa Robot	5
14	FindLinks Robot	5
15	Perl LWP	5
16	Search4free Robot	5

17	BrightCrawler (http://www.brightcloud.com/brightcrawler.asp)	1
		14,642