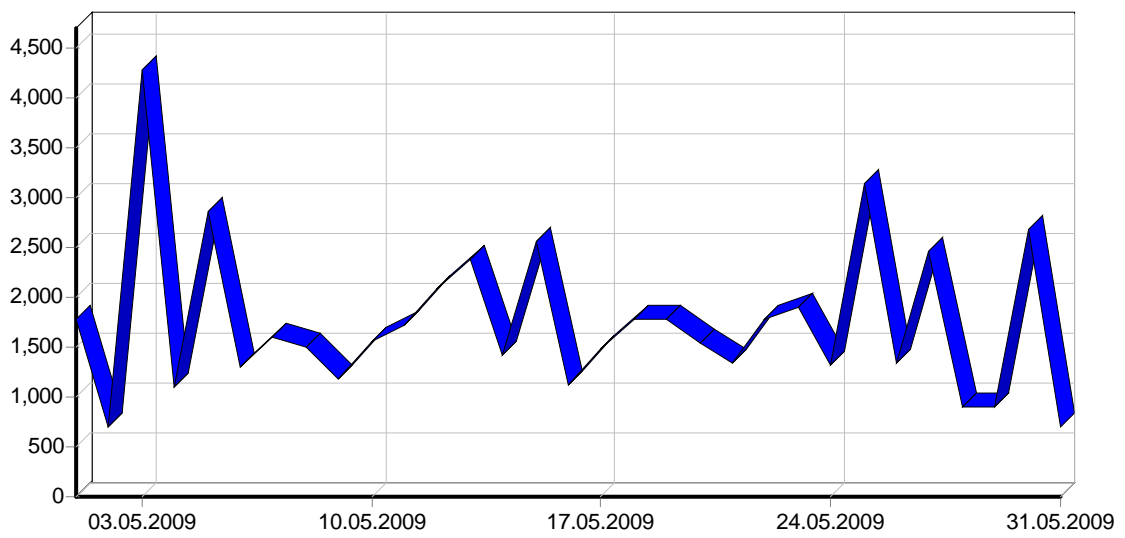
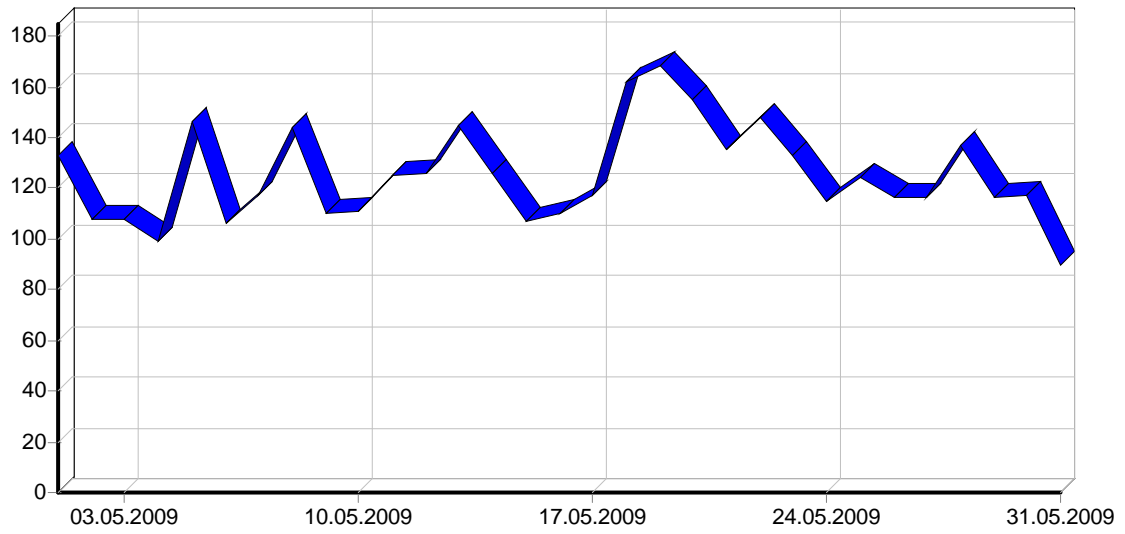
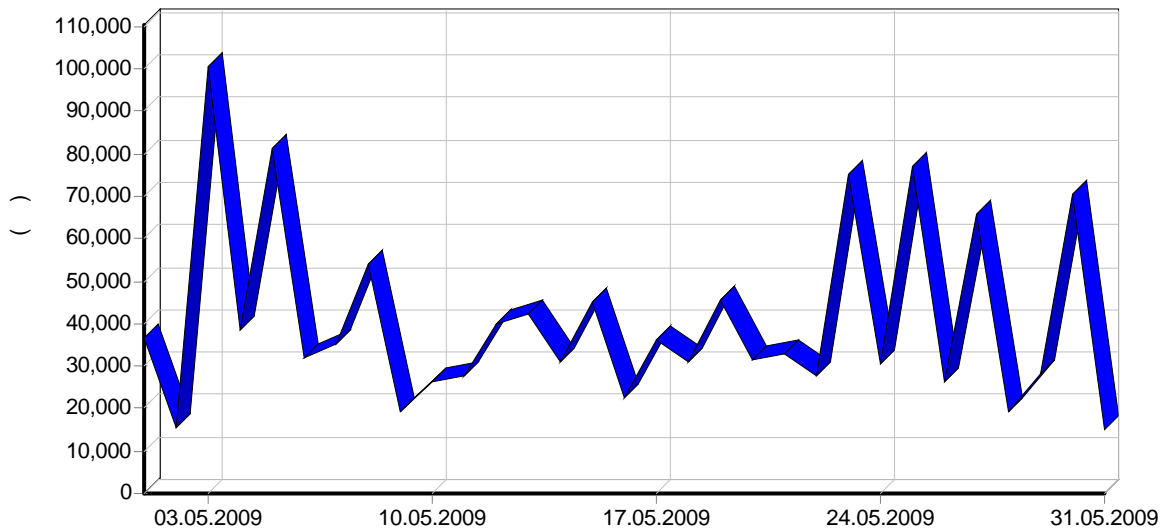
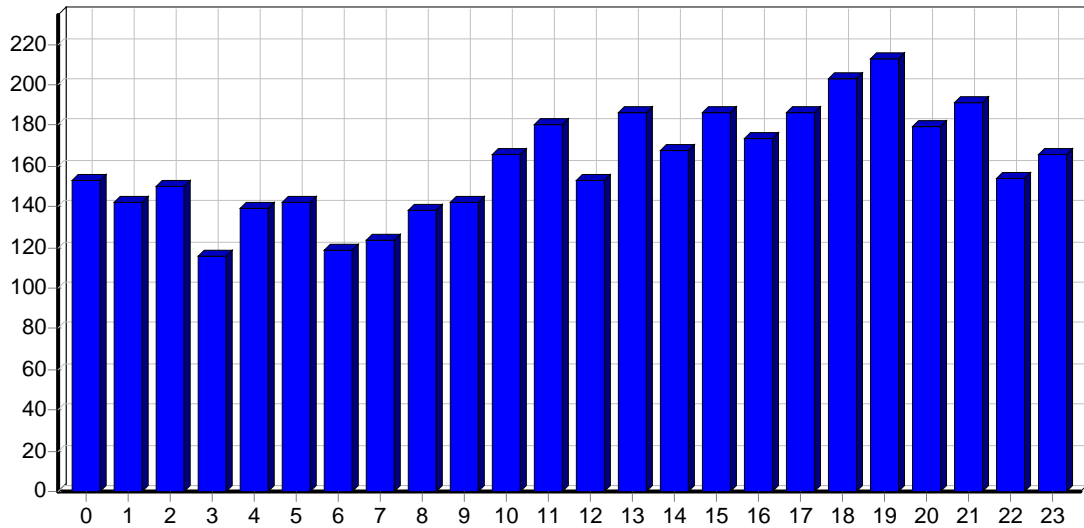


	54,055
	1,743
	13.97
	7,059
	2,696
	15,631
	504
	4.04
	3,870
	124
IP-	1,797
	1.20
	39.70
	23.31
	325.60

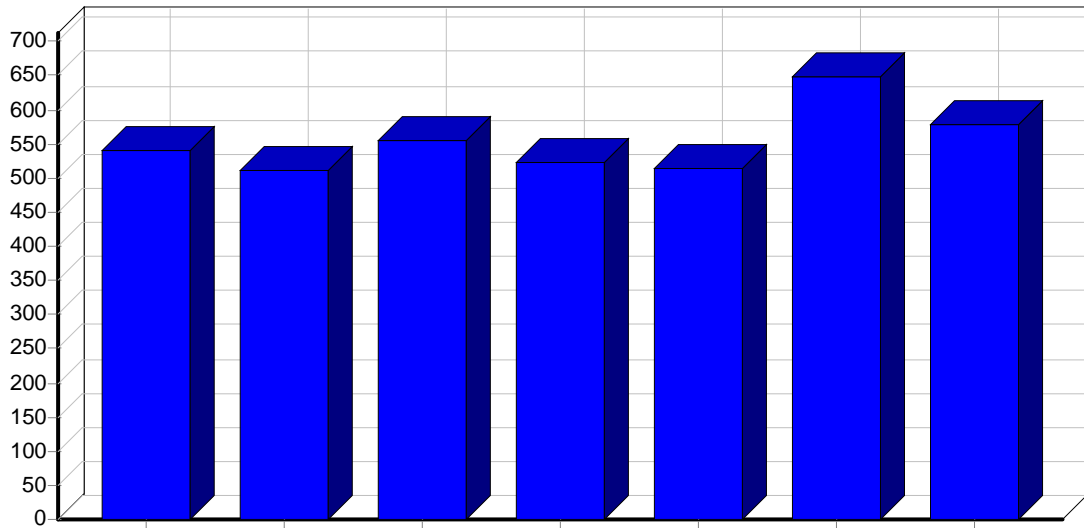




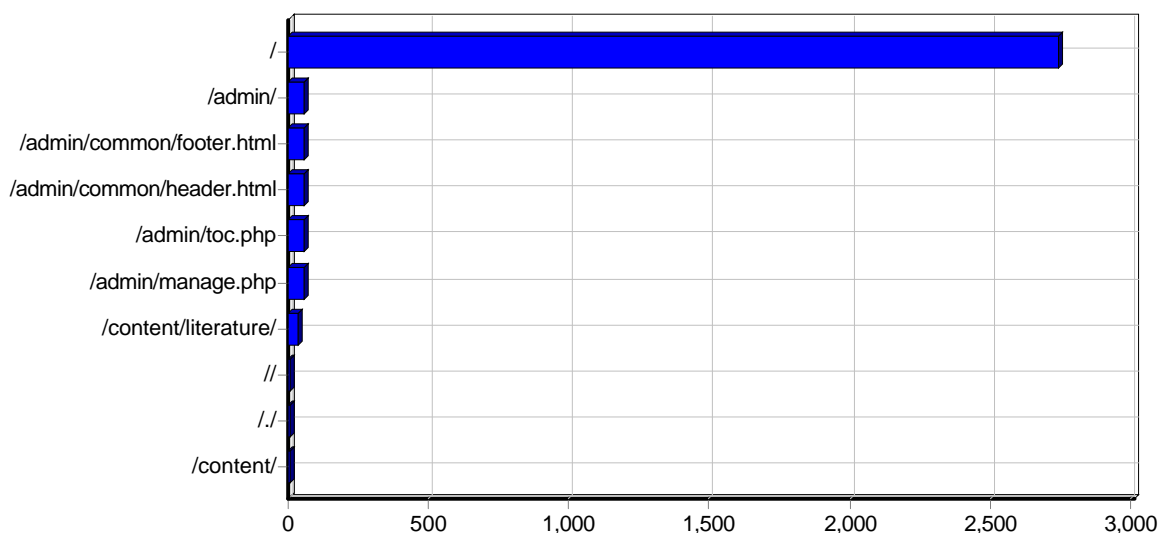
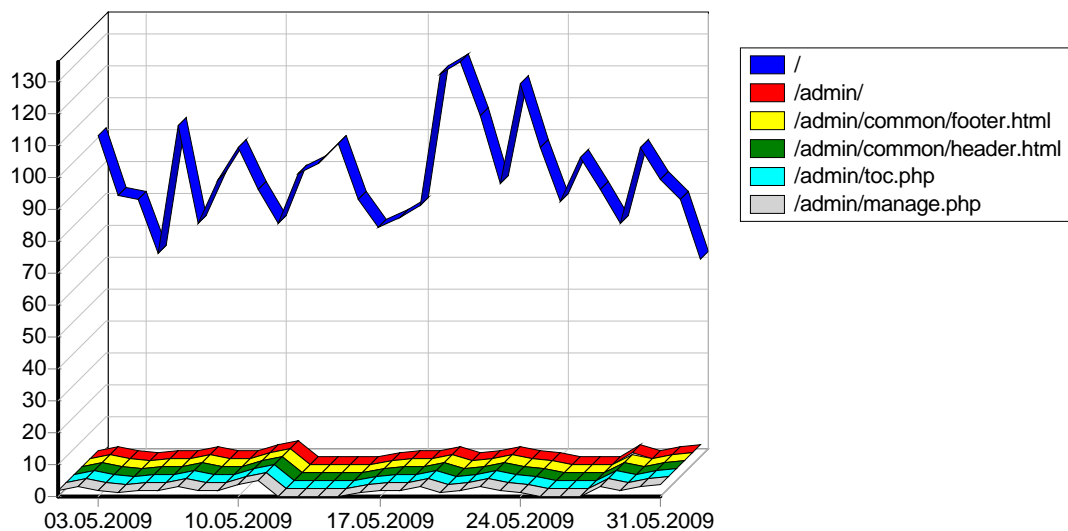
					()
01.05.2009	1,768	587	133	03:47	36,728
02.05.2009	691	213	108	05:46	15,261
03.05.2009	4,265	1,499	108	07:20	100,302
04.05.2009	1,090	224	99	05:03	38,615
05.05.2009	2,858	715	146	06:48	81,348
06.05.2009	1,305	234	106	05:56	32,035
07.05.2009	1,601	301	117	04:22	35,272
08.05.2009	1,493	528	144	04:34	53,967
09.05.2009	1,176	255	110	04:57	19,290
10.05.2009	1,566	562	111	09:26	26,118
11.05.2009	1,722	354	125	06:12	27,916
12.05.2009	2,072	478	126	06:15	40,005
13.05.2009	2,378	490	145	04:55	42,126
14.05.2009	1,413	224	126	06:09	30,835
15.05.2009	2,565	490	107	09:42	44,910
16.05.2009	1,113	372	110	08:37	22,469
17.05.2009	1,473	362	117	06:16	36,118
18.05.2009	1,770	613	162	05:54	30,760
19.05.2009	1,774	671	168	08:48	45,514
20.05.2009	1,537	371	155	03:19	31,691
21.05.2009	1,344	337	135	06:30	33,025
22.05.2009	1,784	728	148	13:23	27,935
23.05.2009	1,896	481	133	07:50	75,202
24.05.2009	1,310	375	115	14:24	30,464
25.05.2009	3,132	1,194	124	15:15	77,044
26.05.2009	1,339	363	116	09:26	26,202
27.05.2009	2,458	662	116	07:41	65,880
28.05.2009	889	251	137	04:46	19,021
29.05.2009	899	367	116	05:25	28,287
30.05.2009	2,668	1,175	117	04:29	70,607
31.05.2009	706	155	90	04:23	15,121
	54,055	15,631	3,870	07:01	1,260,082



			()
00:00 - 00:59	1,845	153	41,878
01:00 - 01:59	2,428	142	57,434
02:00 - 02:59	1,876	150	26,895
03:00 - 03:59	1,206	116	17,188
04:00 - 04:59	996	139	24,336
05:00 - 05:59	825	142	19,229
06:00 - 06:59	994	119	21,519
07:00 - 07:59	1,218	124	52,625
08:00 - 08:59	3,030	138	89,184
09:00 - 09:59	2,335	142	85,132
10:00 - 10:59	2,929	166	49,846
11:00 - 11:59	1,991	180	49,190
12:00 - 12:59	2,053	153	57,425
13:00 - 13:59	2,030	186	42,019
14:00 - 14:59	2,601	168	42,901
15:00 - 15:59	1,953	186	38,173
16:00 - 16:59	2,659	174	52,401
17:00 - 17:59	4,622	186	98,562
18:00 - 18:59	3,332	203	70,102
19:00 - 19:59	3,108	213	64,094
20:00 - 20:59	2,369	179	81,497
21:00 - 21:59	2,894	191	74,800
22:00 - 22:59	2,140	154	51,847
23:00 - 23:59	2,621	166	51,794
	54,055	3,870	1,260,082

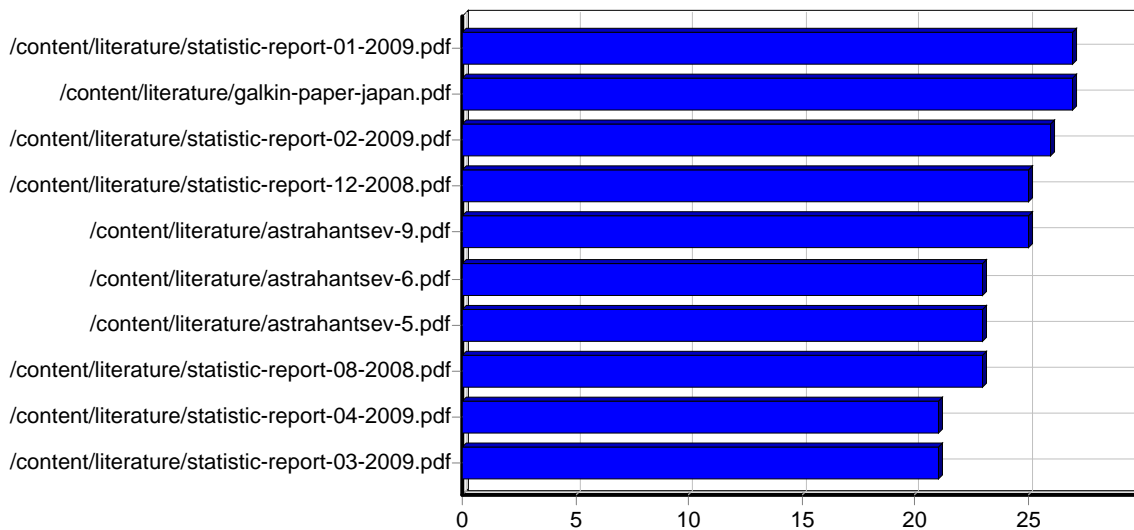
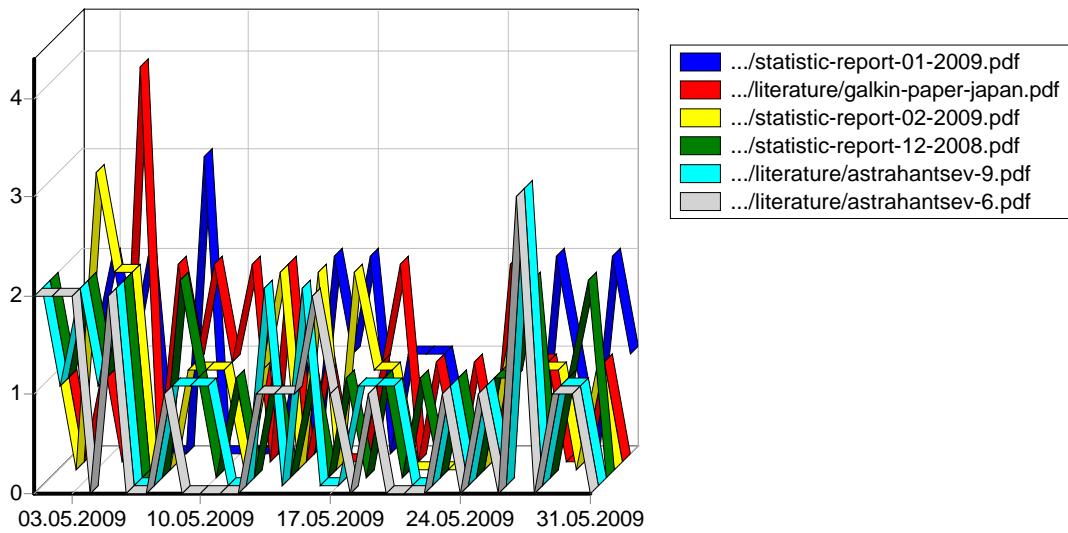


			()
	9,320	541	208,125
	7,714	510	174,337
	8,043	556	193,071
	7,678	522	171,733
	5,247	515	118,154
	8,509	648	191,829
	7,544	578	202,830
	54,055	3,870	1,260,082



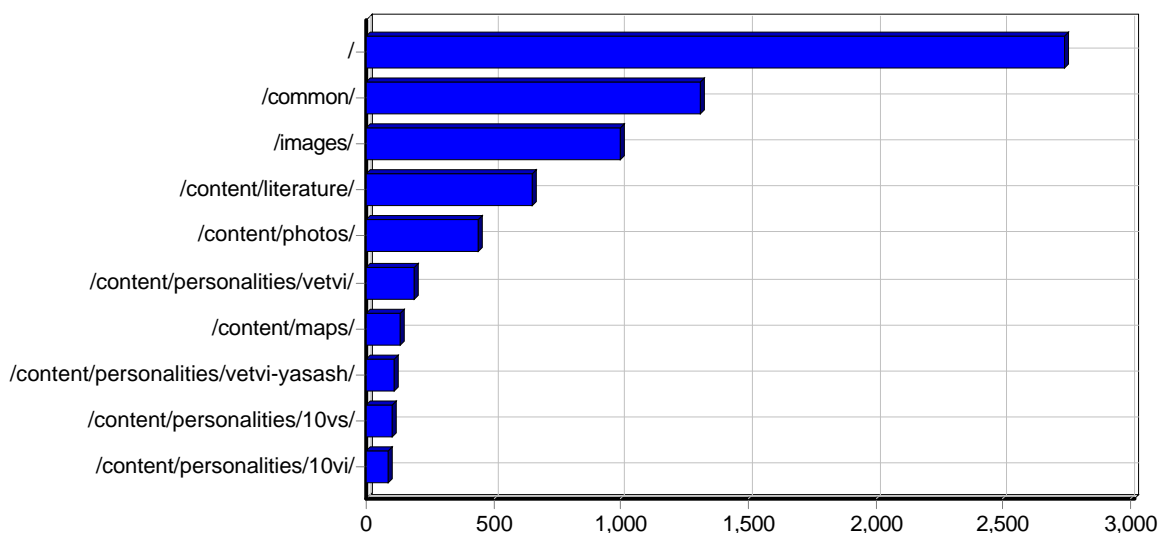
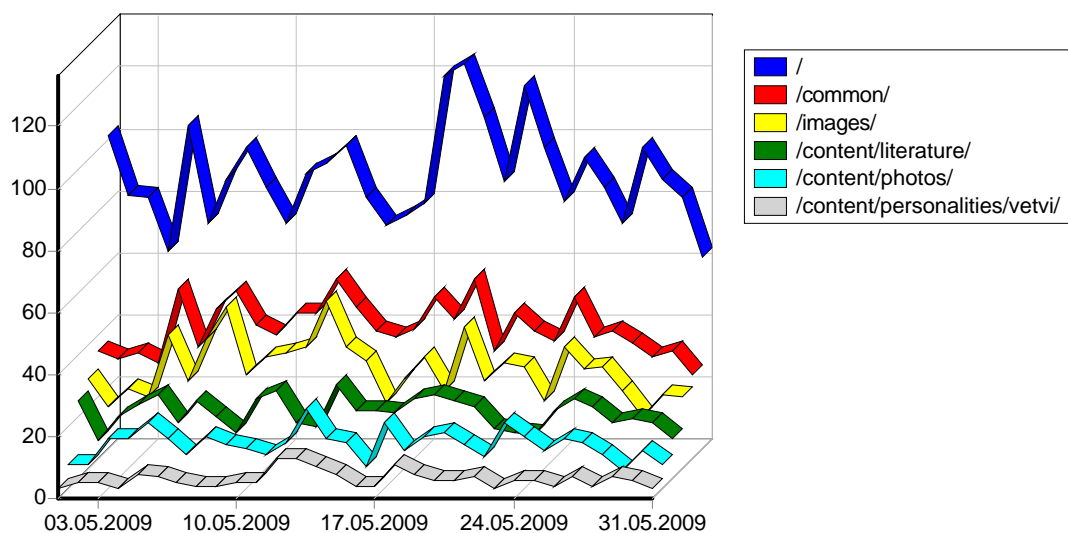
					()
1	http://www.epov.ru/	14,760	0	2,741	284,363
2	http://www.epov.ru/admin/	118	0	58	50
3	http://www.epov.ru/admin/common/footer.html	59	0	57	14
4	http://www.epov.ru/admin/common/header.html	59	0	57	12
5	http://www.epov.ru/admin/toc.php	60	0	57	63
6	http://www.epov.ru/admin/manage.php	254	0	57	47,139
7	http://www.epov.ru/content/literature/	34	0	34	0
8	http://www.epov.ru//	13	0	7	84
9	http://www.epov.ru/./	7	0	7	74
10	http://www.epov.ru/content/	13	0	7	3
11	http://www.epov.ruhttp://epov.ru/	4	0	4	42
12	http://www.epov.ru/////	6	0	3	48
13	http://www.epov.ru/content/personalities/vetvi/	3	0	3	0

14	http://www.epov.ru/	6	0	3	45
15	http://www.epov.ru/	6	0	3	48
16	http://www.epov.ru/content/personalities/vetvi-yasash/	2	0	2	0
17	http://www.epov.ru/content/personalities/0/	2	0	2	0
18	http://www.epov.ru http://www.epov.ru/	71	0	2	1,623
19	http://www.epov.ru/content/personalities/3/	1	0	1	0
20	http://www.epov.ru/content/personalities/10vs/	1	0	1	0
21	http://www.epov.ru/admin/common/	1	0	1	0
22	http://www.epov.ru/	2	0	1	15
23	http://www.epov.ru/content/maps/	1	0	1	0
24	http://www.epov.ru/content/personalities/10vi/	1	0	1	0
25	http://www.epov.ru/content/personalities/10sm/	1	0	1	0
		15,485	0	-	333,632



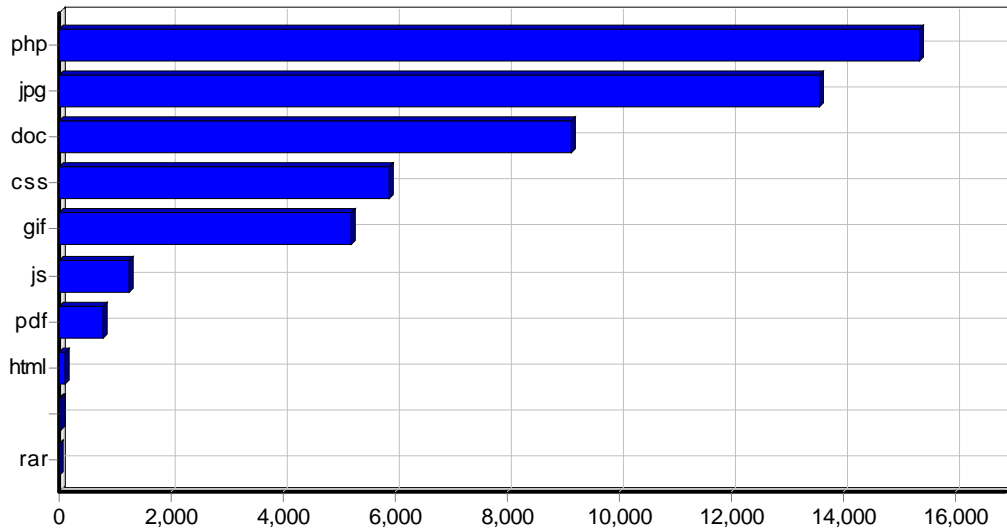
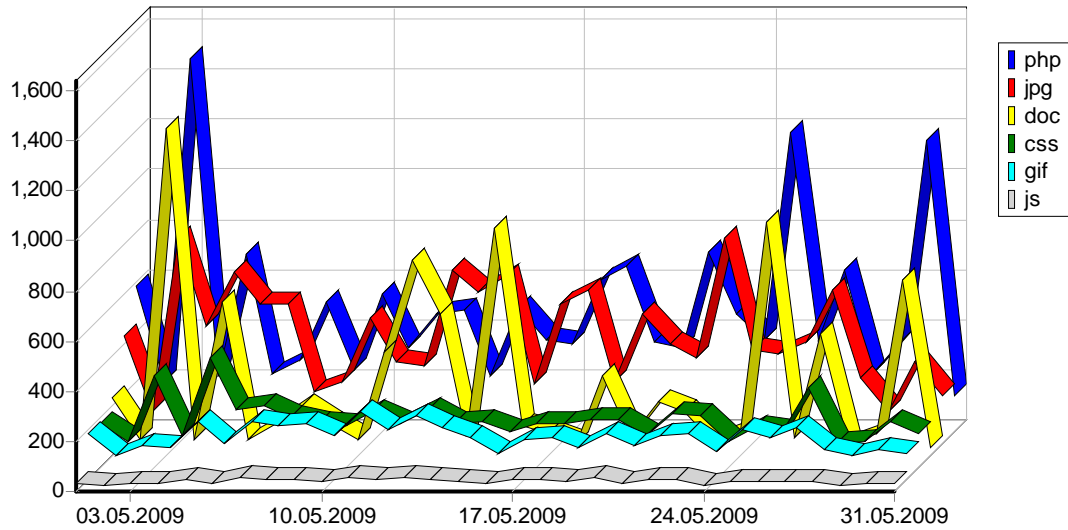
					()
1	http://www.epov.ru/content/literature/statistic-report-01-2009.pdf	29	1	27	2,812

2	http://www.epov.ru/content/literature/galkin-paper-japan.pdf	87	59	27	9,099
3	http://www.epov.ru/content/literature/statistic-report-02-2009.pdf	28	1	26	1,957
4	http://www.epov.ru/content/literature/statistic-report-12-2008.pdf	26	2	25	2,993
5	http://www.epov.ru/content/literature/astrahantsev-9.pdf	25	0	25	8,101
6	http://www.epov.ru/content/literature/astrahantsev-6.pdf	24	0	23	22,647
7	http://www.epov.ru/content/literature/astrahantsev-5.pdf	24	1	23	21,410
8	http://www.epov.ru/content/literature/statistic-report-08-2008.pdf	23	0	23	2,948
9	http://www.epov.ru/content/literature/statistic-report-04-2009.pdf	23	2	21	3,082
10	http://www.epov.ru/content/literature/statistic-report-03-2009.pdf	23	2	21	1,917
11	http://www.epov.ru/content/literature/astrahantsev-8.pdf	21	0	21	5,146
12	http://www.epov.ru/content/literature/astrahantsev-3.pdf	21	0	21	18,059
13	http://www.epov.ru/content/literature/astrahantsev-2.pdf	20	0	20	26,097
14	http://www.epov.ru/content/literature/statistic-report-08-2007.pdf	21	1	20	2,730
15	http://www.epov.ru/content/literature/statistic-report-01-2008.pdf	23	1	20	3,069
16	http://www.epov.ru/content/literature/astrahantsev-7.pdf	26	5	20	22,836
17	http://www.epov.ru/content/literature/astrahantsev-4.pdf	20	0	20	29,008
18	http://www.epov.ru/content/literature/astrahantsev-1.pdf	19	0	19	13,197
19	http://www.epov.ru/content/literature/statistic-report.pdf	22	3	19	3,085
20	http://www.epov.ru/content/literature/astrahantsev-10.pdf	19	0	19	3,230
21	http://www.epov.ru/content/literature/statistic-report-09-2007.pdf	23	3	19	2,648
22	http://www.epov.ru/content/literature/statistic-report-05-2007.pdf	18	0	18	1,199
23	http://www.epov.ru/content/literature/statistic-report-03-2008.pdf	15	0	15	1,702
24	http://www.epov.ru/content/literature/statistic-report-07-2008.pdf	14	0	14	1,721
25	http://www.epov.ru/content/literature/statistic-report-10-2007.pdf	18	2	14	1,487
26	http://www.epov.ru/content/literature/statistic-report-10-2008.pdf	13	0	13	1,457
27	http://www.epov.ru/content/literature/achik-tash.pdf	13	0	13	28,362
28	http://www.epov.ru/content/literature/statistic-report-09-2008.pdf	13	0	13	1,267
29	http://www.epov.ru/content/literature/statistic-report-11-2008.pdf	14	1	13	1,631
30	http://www.epov.ru/content/literature/statistic-report-12-2007.pdf	11	0	11	985
31	http://www.epov.ru/content/literature/statistic-report-11-2007.pdf	13	2	11	1,132
32	http://www.epov.ru/content/literature/statistic-report-06-2007.pdf	13	2	11	763
33	http://www.epov.ru/content/literature/statistic-report-06-2008.pdf	9	0	9	955
34	http://www.epov.ru/content/literature/statistic-report-05-2008.pdf	9	0	9	1,016
35	http://www.epov.ru/content/literature/statistic-report-02-2008.pdf	9	0	9	1,016
36	http://www.epov.ru/content/literature/statistic-report-07-2007.pdf	9	0	9	827
37	http://www.epov.ru/content/literature/besk.rar	2	0	2	4,686
38	http://www.epov.ru/content/literature/VEpov_Ot-Achik-tasha_do_Everesta.pdf	34	34	1	3,438
		774	122	-	259,734

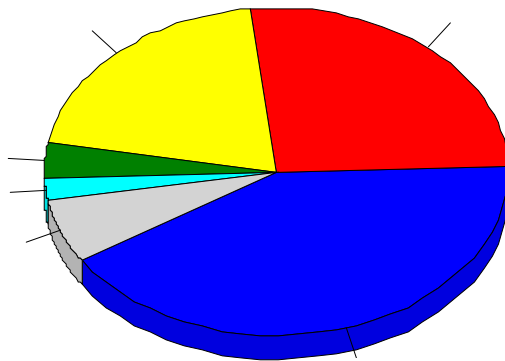
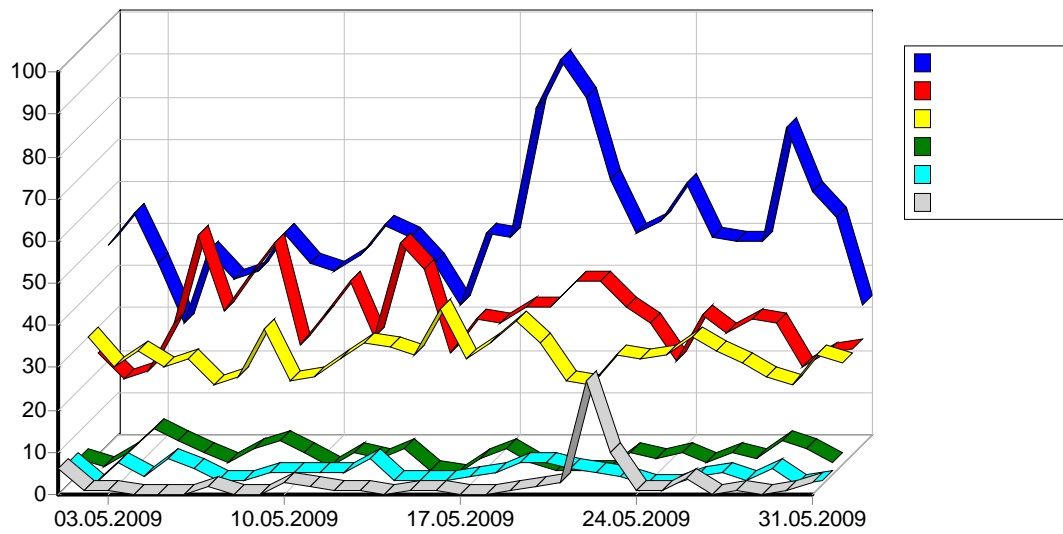


					()
1	http://www.epov.ru/	14,764	0	2,741	284,406
2	http://www.epov.ru/common/	6,749	5	1,311	8,494
3	http://www.epov.ru/images/	9,030	15	1,000	58,180
4	http://www.epov.ru/content/literature/	2,298	135	655	411,501
5	http://www.epov.ru/content/photos/	8,380	13	440	255,245
6	http://www.epov.ru/content/personalities/vetvi/	1,451	0	190	23,349
7	http://www.epov.ru/content/maps/	713	8	136	39,246
8	http://www.epov.ru/content/personalities/vetvi-yasash/	614	0	107	10,524
9	http://www.epov.ru/content/personalities/10vs/	1,041	0	103	18,623
10	http://www.epov.ru/content/personalities/10vi/	669	0	85	10,876
11	http://www.epov.ru/content/personalities/10vn/	439	0	77	7,536
12	http://www.epov.ru/admin/common/	492	0	58	270
13	http://www.epov.ru/admin/	432	0	58	47,253
14	http://www.epov.ru/admin/images/	59	0	57	6
15	http://www.epov.ru/content/personalities/10vp/	498	0	50	8,163
16	http://www.epov.ru/content/personalities/9vi/	310	0	49	4,913

17	http://www.epov.ru/content/personalities/9vn/	217	0	47	3,131
18	http://www.epov.ru/content/personalities/10sn/	304	0	44	4,582
19	http://www.epov.ru/content/personalities/9vs/	263	0	43	4,326
20	http://www.epov.ru/content/personalities/4/	187	0	33	3,385
21	http://www.epov.ru/content/personalities/6/	136	0	30	2,395
22	http://www.epov.ru/content/personalities/10sm/	163	0	30	2,422
23	http://www.epov.ru/content/personalities/8vn/	121	0	29	2,000
24	http://www.epov.ru/content/personalities/3/	107	4	29	1,913
25	http://www.epov.ru/content/personalities/9sn/	148	0	29	2,093
26	http://www.epov.ru/content/personalities/9vp/	136	0	28	2,117
27	http://www.epov.ru/content/personalities/7/	134	2	28	2,388
28	http://www.epov.ru/content/personalities/8sn/	121	0	28	2,180
29	http://www.epov.ru/content/personalities/10vm/	136	0	27	2,059
30	http://www.epov.ru/content/personalities/5/	149	1	26	2,646
31	http://www.epov.ru/content/personalities/8vs/	91	0	23	1,704
32	http://www.epov.ru/content/personalities/8vi/	67	0	23	1,266
33	http://www.epov.ru/content/personalities/8vp/	69	0	23	1,203
34	http://www.epov.ru/content/personalities/0/	26	0	22	410
35	http://www.epov.ru/content/personalities/7sm/	59	0	21	994
36	http://www.epov.ru/content/personalities/7sn/	65	0	20	1,072
37	http://www.epov.ru/content/personalities/1/	21	0	19	360
38	http://www.epov.ru/content/personalities/2/	34	0	18	648
39	http://www.epov.ru/content/personalities/8vm/	16	0	16	280
40	http://www.epov.ru/content/personalities/9sm/	77	0	15	953
41	http://www.epov.ru/content/personalities/7ss/	38	0	15	549
42	http://www.epov.ru/content/personalities/8sm/	28	0	12	444
43	http://www.epov.ru/content/personalities/9vm/	15	0	10	223
44	http://www.epov.ru/content/broshura/	337	0	9	20,839
45	http://www.epov.ru/	16	0	7	116
46	http://www.epov.ru/.	7	0	7	74
47	http://www.epov.ru/content/	13	0	7	3
48	http://www.epov.ruhttp://epov.ru/	4	0	4	42
49	http://www.epov.ru///	9	0	3	77
50	http://www.epov.ru///	9	0	3	80
		51,262	183	-	1,257,575
		51,359	183	-	1,259,346

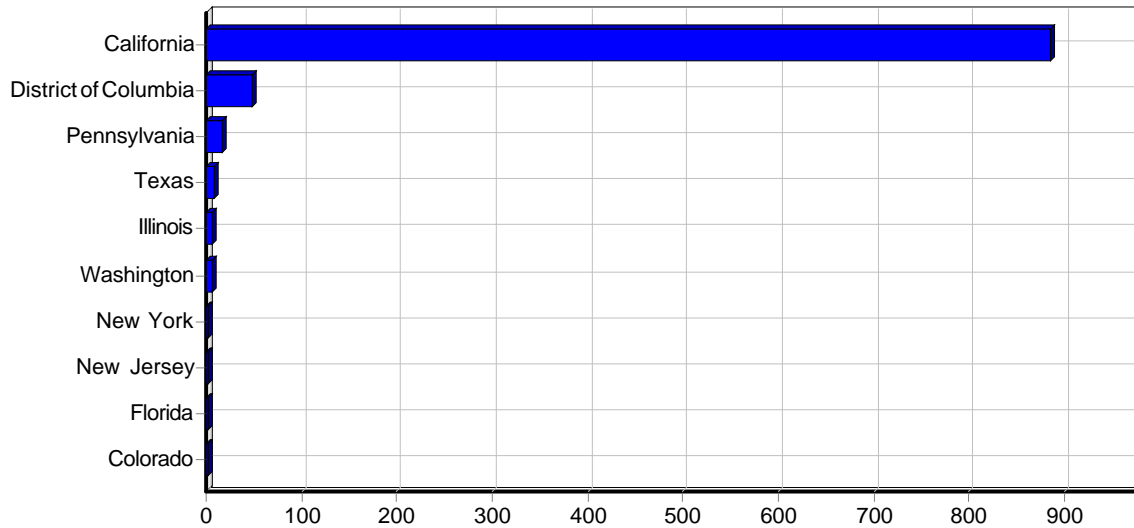


				()
1	php	15,367	0	333,605
2	jpg	13,593	36	382,953
3	doc	9,134	20	272,806
4	css	5,890	5	7,159
5	gif	5,220	0	1,260
6	js	1,244	0	1,597
7	pdf	772	122	255,047
8	html	118	0	27
9		19	0	201
10	rar	2	0	4,686
		51,359	183	1,259,346



				%	()
1		7,971	1,603	41.42%	236,652
2		19,706	1,015	26.23%	482,438
3		19,152	790	20.41%	374,409
4		2,078	134	3.46%	51,003
5		2,334	80	2.07%	44,664
6		78	73	1.89%	1,927
7		381	19	0.49%	8,221
8		241	14	0.36%	4,400
9		287	12	0.31%	4,442
10		51	11	0.28%	859
11		10	9	0.23%	183
12		510	9	0.23%	16,396
13		70	8	0.21%	3,095
14		47	6	0.16%	5,090

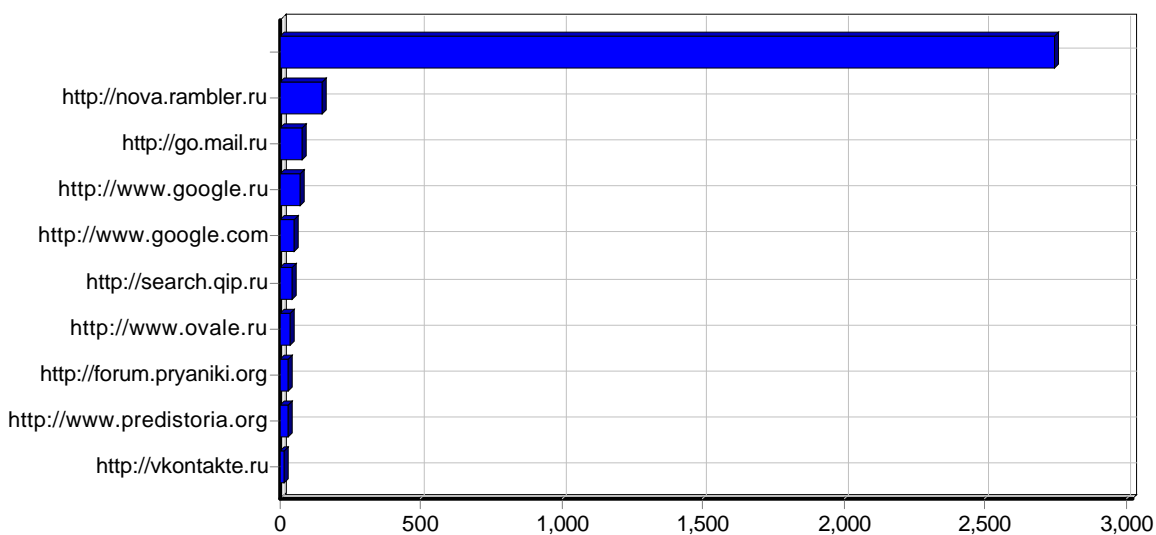
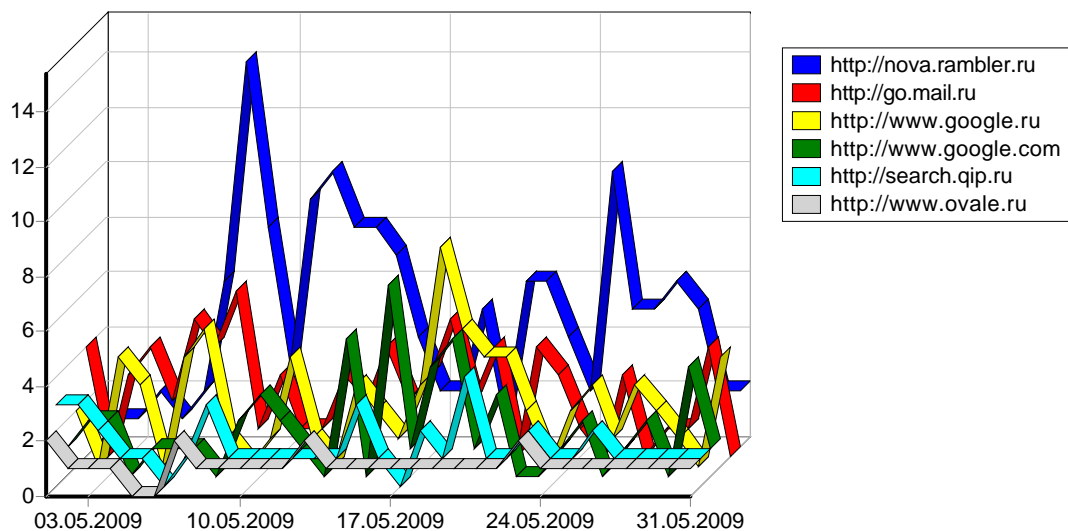
15		124	6	0.16%	2,403
16		59	6	0.16%	660
17		10	6	0.16%	584
18		89	6	0.16%	1,519
19		10	5	0.13%	54
20		7	5	0.13%	410
21		58	5	0.13%	1,349
22		186	4	0.10%	4,467
23		45	4	0.10%	1,153
24		52	4	0.10%	1,492
25		85	4	0.10%	2,002
26		4	4	0.10%	42
27		5	3	0.08%	364
28		78	2	0.05%	2,194
29		20	2	0.05%	737
30		21	2	0.05%	334
31		30	2	0.05%	902
32	-	1	1	0.03%	5
33		82	1	0.03%	1,886
34		20	1	0.03%	115
35		2	1	0.03%	194
36		3	1	0.03%	204
37		2	1	0.03%	10
38		14	1	0.03%	87
39		13	1	0.03%	258
40		22	1	0.03%	338
41		20	1	0.03%	311
42		2	1	0.03%	12
43		49	1	0.03%	1,183
44		1	1	0.03%	6
45		7	1	0.03%	866
46		15	1	0.03%	82
47		1	1	0.03%	47
48		2	1	0.03%	12
		54,055	3,870	100.00%	1,260,082



				()
1	California	3,023	885	82,132
2	District of Columbia	330	48	4,468
3	Pennsylvania	48	16	4,387
4	Texas	26	8	436
5	Illinois	3,055	6	95,847
6	Washington	12	6	472
7	New York	4	3	30
8	New Jersey	14	2	86
9	Florida	2	2	11
10	Colorado	2	2	21
11	Georgia	70	2	1,456
12	Missouri	4	2	32
13	Arizona	1	1	169
14	Virginia	2	1	175
15	Nevada	12	1	34
16	North Carolina	1	1	8
		6,606	986	189,771

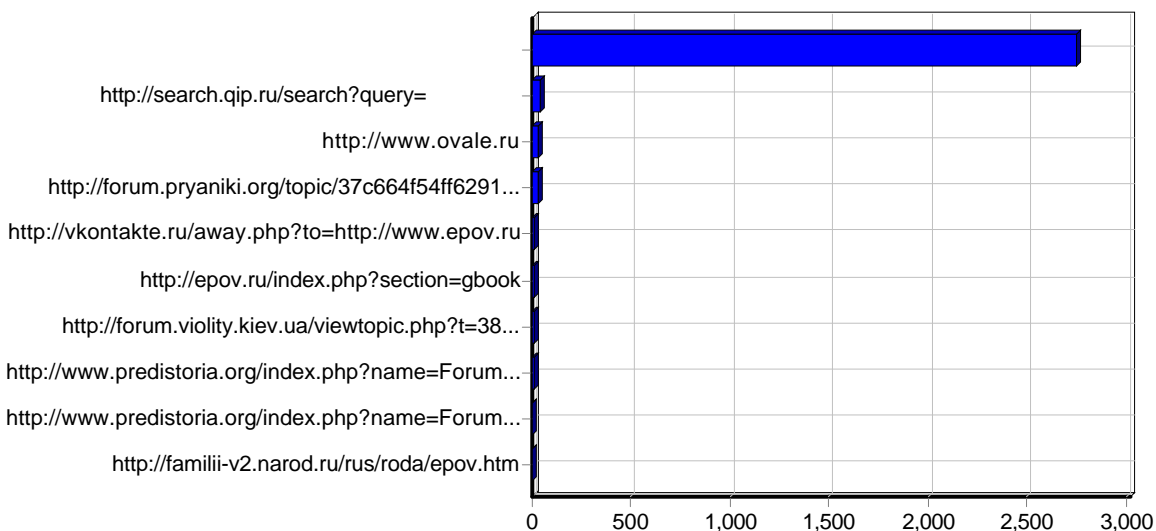
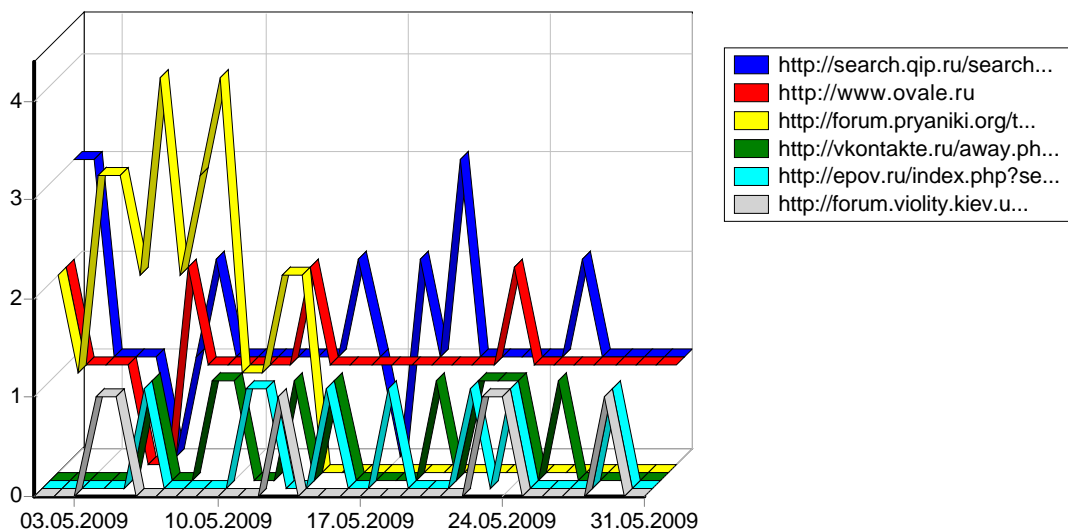
				()
1	Moscow,	10,897	558	263,122
2	Sunnyvale, California,	1,523	478	36,307
3	Mountain View, California,	1,454	376	45,608
4	Novosibirsk,	1,929	87	52,802
5	Beijing,	69	67	1,174
6	Washington, District of Columbia,	330	48	4,468
7	Erfurt,	75	48	4,499
8	Saint Petersburg,	901	39	19,547
9	Kiev,	616	35	12,079
10	Khabarovsk,	514	30	10,945

11	Scranton, Pennsylvania,	48	16	4,387
12	Irkutsk,	308	16	6,731
13	Santa Clara, California,	18	16	58
14	Krasnodar,	200	15	2,913
15	Frankfurt Am Main,	570	15	10,345
16	Chita,	500	14	8,425
17	Rostov,	167	13	2,417
18	Voronezh,	146	13	3,126
19	Dresden,	142	12	5,321
20	Yekaterinburg,	104	12	1,567
21	Heidelberg,	447	11	16,273
22	Los Angeles, California,	22	11	121
23	Vladivostok,	196	11	3,757
24	Gunzenhausen,	120	10	2,438
25	Dnepropetrovsk,	995	9	19,208
26	Chelyabinsk,	124	9	2,027
27	London,	91	8	1,773
28	Krasnoyarsk,	146	8	1,922
29	Dnepropetrovsk,	68	6	863
30	Oldenburg,	27	6	90
31	Riga,	124	6	2,403
32	Penza,	117	6	1,972
33	Kaliningrad,	68	5	1,061
34	Chicago, Illinois,	3,054	5	95,838
35	Rome,	108	5	1,784
36	Volgograd,	76	5	926
37	Kursk,	53	5	651
38	Perm,	18	5	1,237
39	Bucuresti,	88	5	1,515
40	Ochakovo,	137	5	6,992
41	Z rich,	10	5	54
42	Saransk,	44	4	795
43	Seoul,	20	4	378
44	Ulaanbaatar,	57	4	1,285
45	Gro wallstadt,	6	4	411
46	Stockholm,	4	4	59
47	Berlin,	4	4	0
48	Agi ,	10	4	1,277
49	Novaya,	51	4	441
50	Norilsk,	132	4	1,858
		26,928	2,090	665,271
		31,781	2,377	767,139



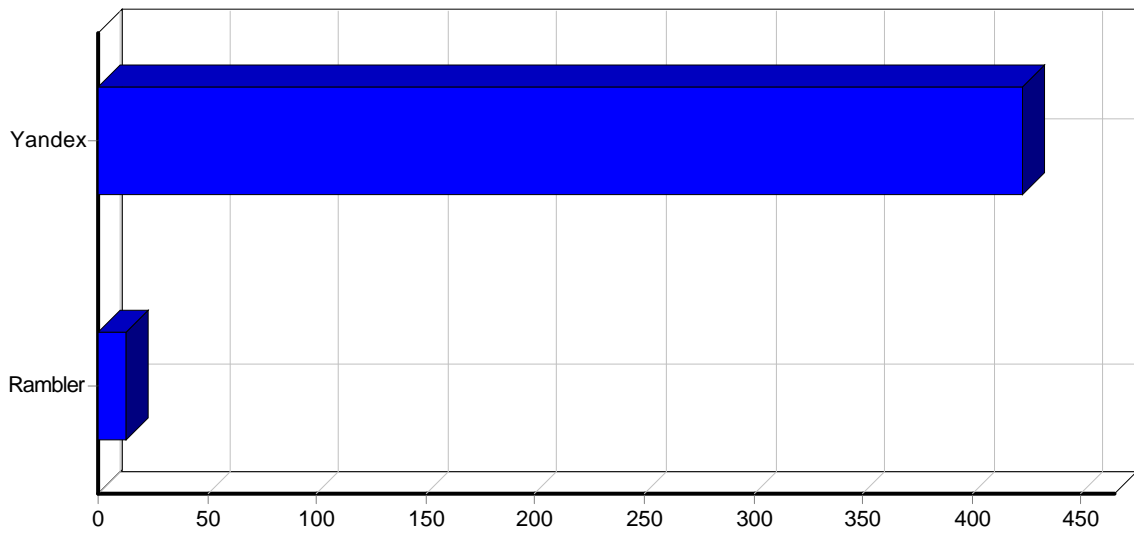
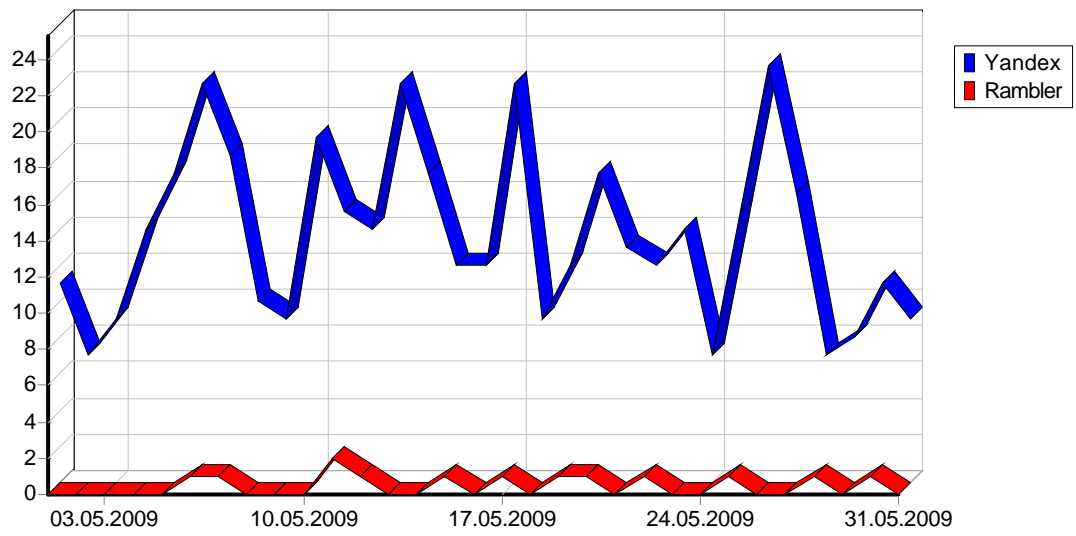
1		2,748
2	http://nova.rambler.ru	147
3	http://go.mail.ru	76
4	http://www.google.ru	73
5	http://www.google.com	53
6	http://search.qip.ru	44
7	http://www.ovale.ru	33
8	http://forum.pryaniki.org	30
9	http://www.predistoria.org	28
10	http://vkontakte.ru	11
11	http://nigma.ru	11
12	http://epov.ru	11
13	http://hghltd.yandex.net	9
14	http://search.live.com	9

15	http://forum.violity.kiev.ua	7
16	http://www.google.com.ua	6
17	http://search.msn.com	6
18	http://seo-krutilka.ru	5
19	http://www.google.de	4
20	http://win.mail.ru	4
21	http://famili-v2.narod.ru	4
22	http://images.google.com.ua	4
23	http://whois.domaintools.com	4
24	http://ltalk.ru	3
25	http://www.google.lv	3
26	http://m.yandex.ru	3
27	http://see.ru	3
28	http://search.icq.com	3
29	http://search.conduit.com	3
30	http://images.google.ru	3
31	http://images.google.com	3
32	http://gendrevo.ru	3
33	http://www.dmoz.org	2
34	http://r-g-d.ru	2
35	http://ru.wikipedia.org	2
36	http://forum.vgd.ru	2
37	http://search.yahoo.co.jp	2
38	http://content.mail.ru	2
39	http://www.petergen.com	2
40	http://www.roidsmall.com	2
41	http://poisk.ru	2
42	http://zalizyaka.livejournal.com	2
43	http://www.nigma.ru	2
44	http://www.google.fr	2
45	http://www.spamer.in	1
46	http://www.smimed.net	1
47	http://www.linksco.com	1
48	http://www.cat.aumizik.ru	1
49	http://www.warheroes.ru	1
50	http://webmastercoffee.com	1
		3,384
		3,431

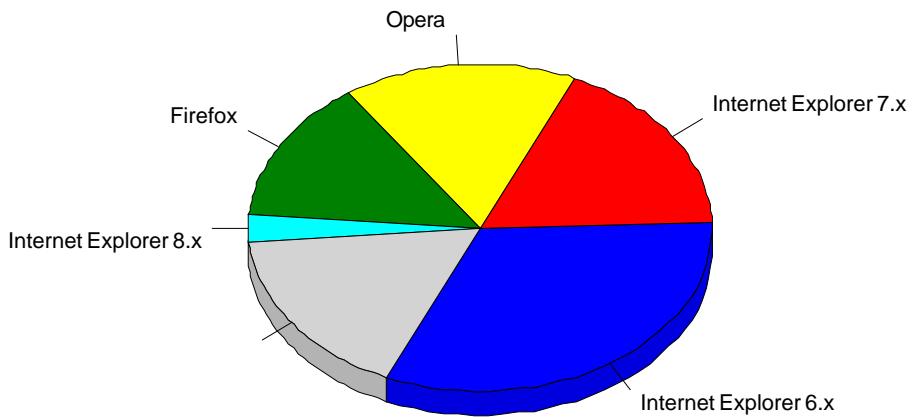
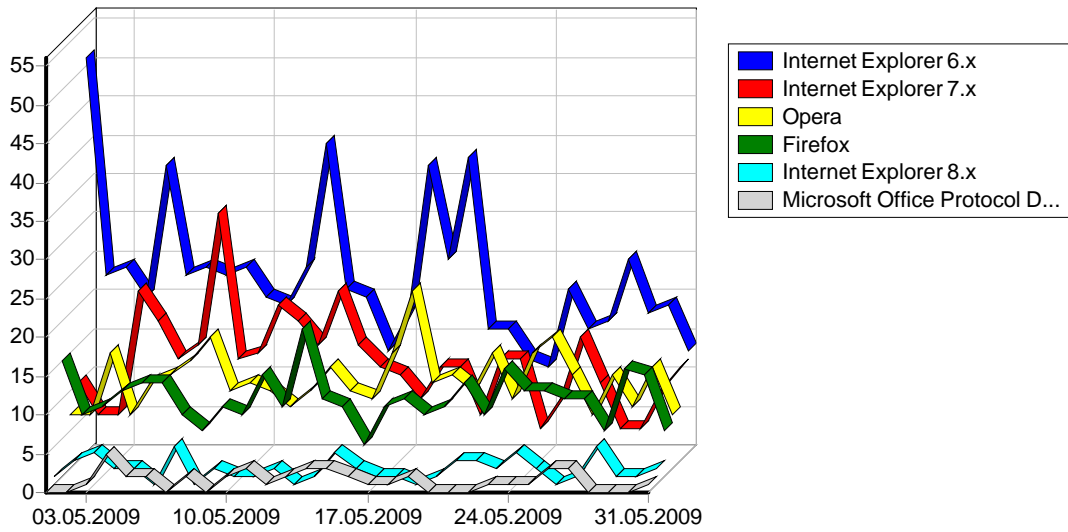


	URL	
1		2,748
2	http://search.qip.ru/search?query=	39
3	http://www.ovale.ru	33
4	http://forum.pryaniki.org/topic/37c664f54ff62918.html	30
5	http://vkontakte.ru/away.php?to=http://www.epov.ru	10
6	http://epov.ru/index.php?section=gbook	8
7	http://forum.violity.kiev.ua/viewtopic.php?t=38889&postdays=0&postorder=asc&start=100	6
8	http://www.predistoria.org/index.php?name=Forums&file=viewtopic&t=48&postdays=0&postorder=asc&start=345	6
9	http://www.predistoria.org/index.php?name=Forums&file=viewtopic&t=1113&postdays=0&postorder=asc&start=195	5
10	http://famili-v2.narod.ru/rus/roda/epov.htm	4
11	http://whois.domaintools.com/epov.ru	4
12	http://nigma.ru/index.php?s= °&t=web&yn=1&gl=1&rm=1&ms=1&av=1&yh=1&ap=1&nm=1&lang=all&rg=	4
13	http://www.predistoria.org/index.php?name=Forums&file=viewtopic&p=26732	3
14	http://search.live.com/results.aspx?q=xviii	3
15	http://go.mail.ru/frame.html?imgurl=http://www.epov.ru/content/maps/map_11.jpg&pageurl=http://www.epov.ru/index.php?section=geography&id=8068710&iid=2&imgwidth=219&imgheight=164&imgsize=45431&images_links=b	3

16	http://gendrevo.ru/index/forum.php?l=	3
17	http://see.ru	3
18	http://www.google.com/ie?q= ° °+ - °&hl=ru&btnG=	2
19	http://www.petergen.com/links.shtml	2
20	http://zalizyaka.livejournal.com/12087.html	2
21	http://content.mail.ru/arch/26404/2702423.html	2
22	http://search.live.com/results.aspx?q=online	2
23	http://ltalk.ru/lady/45-956-genealogicheskoe-derevo-read.shtml	2
24	http://search.msn.com/results.aspx?q= μ ° ± , «+ + — ° ± ° ° » μ&go=&form=QBNO	2
25	http://www.dmoz.org/World/Russian/ ± % μ , / “ μ μ ° » / « ° » /	2
26	http://go.mail.ru/search?utf8in=1&q= ° °+ μ μ ‡&sputnik=1	2
27	http://search.qip.ru/search?query= + « ...	2
28	http://seo-krutilka.ru/index.php?option=com_content&view=article&id=3&Itemid=5	2
29	http://seo-krutilka.ru/	2
30	http://www.predistoria.org/index.php?name=Forums&file=viewtopic&p=26978	2
31	http://www.predistoria.org/index.php?name=Forums&file=viewtopic&p=26972	2
32	http://www.predistoria.org/index.php?name=Forums&file=viewtopic&p=26929	2
33	http://epov.ru/	2
34	http://go.mail.ru/search?q=	2
35	http://www.roidsmall.com/links_catalog.php	2
36	http://www.google.com.ua/search?q= , + ” μ °(— ° ¶ μ)&hl=ru&clie nt=firefox-a&channel=s&rls=org.mozilla:ru:official&start=160&sa=N	1
37	http://www.google.com/ie?q= ° °+ - °&hl=ru&start=0&sa=N	1
38	http://www.google.com/m?site=search&client=ms-sonyericsson&q= ” » « ‡ °&channel=lp&start=20&sa=N	1
39	http://www.google.com.ua/search?hl=uk&q= “ μ + ’ ° » + ’ ‡+ ° + » &btnG= € &meta=	1
40	http://www.google.com.ua/search?q= μ μ ° » ‡ μ μ+ μ μ + μ + ° « ...&hl=ru&rlz=1G1GGLQ_RUUA327&start=20&sa=N	1
41	http://www.google.com.ua/search?q= , ° † + ” ° &hl=ru&client=firefox&rls=ru.yandex:ru:official&start =50&sa=N	1
42	http://www.google.com.ua/search?q= μ , + ° ‡ ° » + , μ » °+ ¶ μ μ + ° » μ + € , ° ± °+ ® ¶ + „ , °&ie=utf-8&oe=utf-8&aq=t&rls=o rg.mozilla:ru:official&client=firefox-a	1
43	http://www.google.com/ie?q= » μ + - &hl=ru&btnG=	1
44	http://win.mail.ru/cgi-bin/readmsg?id=12426370520000028507	1
45	http://wm63.su	1
46	http://win.mail.ru/cgi-bin/readmsg?id=12384245140000007139	1
47	http://win.mail.ru/cgi-bin/readmsg?id=12414062370000001314	1
48	http://win.mail.ru/cgi-bin/readmsg?id=12410657490000020161	1
49	http://www.cat.aumizik.ru	1
50	http://www.google.co.jp/search?hl=ja&q= μ · % € 1920&lr=	1
		2,963
		3,431

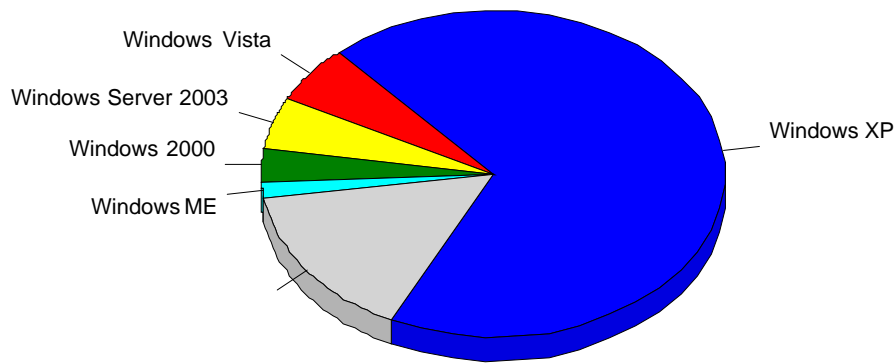
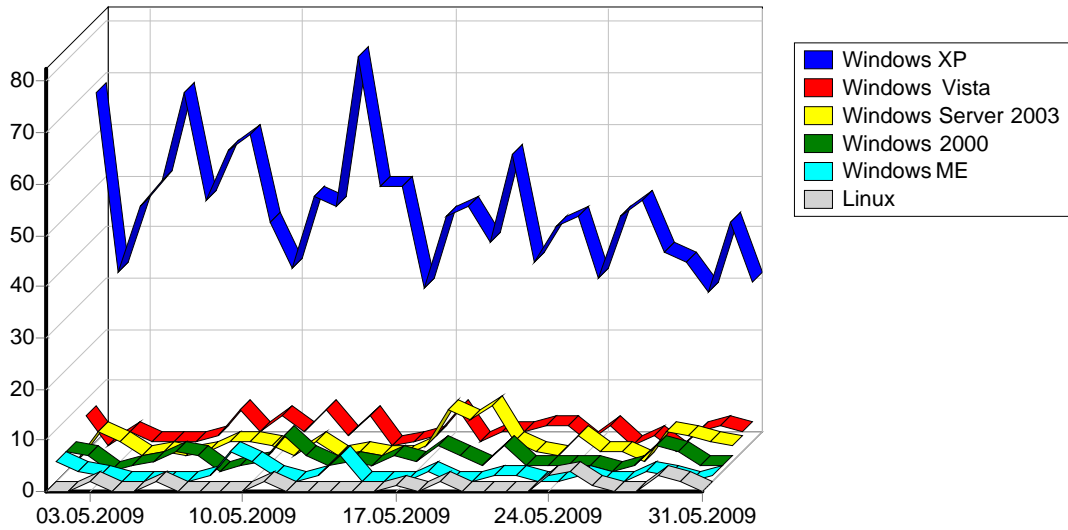


1	Yandex	423
2	Rambler	13
		436



				%
1	Internet Explorer 6.x	10,450	708	32.17%
2	Internet Explorer 7.x	7,455	393	17.86%
3	Opera	5,820	357	16.22%
4	Firefox	5,885	313	14.22%
5	Internet Explorer 8.x	1,128	57	2.59%
6	Microsoft Office Protocol Discovery	42	42	1.91%
7		2,832	30	1.36%
8	Internet Explorer 5.x	121	29	1.32%
9	ovalebot3.ovale.ru facepage	26	26	1.18%
10	Microsoft Data Access Internet Publishing Provider Protocol Discovery	134	24	1.09%
11	Safari	583	16	0.73%
12	Microsoft Office Existence Discovery	14	13	0.59%
13	Netscape 3.x	32	11	0.50%
14	igdeSpyder (compatible; igde.ru; +http://igde.ru/doc/tech.html)	63	11	0.50%

15	Mozilla/5.0 (compatible; Google Desktop)	10	10	0.45%
16	;	40	9	0.41%
17	Netscape 4.x	1,582	9	0.41%
18	libwww-perl/5.805	17	8	0.36%
19	Netscape 5.x	42	6	0.27%
20	blackcrawl/Nutch-0.9 (crawl for fun; www.zipfelchappe.com; zipfelchappe@localhost)	10	5	0.23%
21	FlickySearchBot/1.0 (+testMode)	58	4	0.18%
22	Mozilla	558	4	0.18%
23	Mozilla/5.0 (compatible; Boomerang/0.7)	40	4	0.18%
24	Java/1.6.0_04	120	4	0.18%
25	Netscape 0.x	13	4	0.18%
26	Microsoft-WebDAV-MiniRedir/6.0.6000	15	3	0.14%
27	Microsoft-WebDAV-MiniRedir/5.1.2600	21	3	0.14%
28	ru2_viewer larbin2.6.3@unspecified.mail	3	3	0.14%
29	ru2_viewer (larbin2.6.3@unspecified.mail)	3	3	0.14%
30	Avant Browser	4	3	0.14%
31	Mozilla/3.0 (compatible; WebCapture 2.0; Auto; Windows)	9	3	0.14%
32	Mozilla/2.0 (compatible; MS FrontPage 4.0)	4	3	0.14%
33	Microsoft Data Access Internet Publishing Provider Cache Manager	4	3	0.14%
34	Loserbot/1.0	3	3	0.14%
35	MSFrontPage/4.0	4	3	0.14%
36	Internet Explorer 4.x	7	3	0.14%
37	Microsoft Data Access Internet Publishing Provider DAV 1.1	4	3	0.14%
38	Internet Explorer 2.x	6	2	0.09%
39	ovalebot/7.5rusu	2	2	0.09%
40	OOZBOT/0.20 (--; http://www.setooz.com/oozbot.html; agentname at setooz dot com)	4	2	0.09%
41	User-Agent	2	2	0.09%
42	Wget	2	2	0.09%
43	XXX<? echo \"w0000t!\"; ?>XXX	12	2	0.09%
44	oBot	45	2	0.09%
45	libwww-perl/5.803	2	2	0.09%
46	Gecko/2009042513Ubuntu/8.04 (http://www.roidsmall.com/links_catalog.php)	2	2	0.09%
47	googleru_orgnet_viewer larbin2.6.3@unspecified.mail	2	2	0.09%
48	Mail.Ru/1.0	15	2	0.09%
49	googleru_orgnet_viewer (larbin2.6.3@unspecified.mail)	2	2	0.09%
50	Gecko/20090403SeaMonkey/1.1.16	63	2	0.09%
		37,315	2,159	98.09%
		37,703	2,201	100.00%



				%
1	Windows XP	26,759	1,410	68.85%
2		5,687	227	11.08%
3	Windows Vista	2,681	120	5.86%
4	Windows Server 2003	682	103	5.03%
5	Windows 2000	975	69	3.37%
6	Windows ME	44	34	1.66%
7	Linux	59	22	1.07%
8	Windows 98	130	19	0.93%
9	Windows NT	69	18	0.88%
10	Mac OS	519	9	0.44%
11	Windows 95	21	7	0.34%
12	Windows Win32s	7	3	0.15%
13	FreeBSD	44	3	0.15%
14	Sun OS	15	1	0.05%
15	BeOS	3	1	0.05%
16	Windows CE	1	1	0.05%

17	Windows 3.x	4	1	0.05%
18	OS/2	3	0	0.00%
		37,703	2,048	100.00%